

KOREX WHEEL LOADER

Rated Power | Rated Speed
58~178kw | 2,000~2,400rpm

Rated Bucket Capacity
1~5m³

Operating Weight
6,000~19,500kg

Max. Breakout Force
58~190kN



OFFICE

Office. 603 6th floor 298, Beotkkot-ro, Geumcheon-gu, Seoul, Republic of Korea
Factory. 246 Gogol-gil, Deogyang-gu, Goyang-si, Gyeonggi-do, Republic of Korea
Tel. (+82)2038-0008
Email. sales@kscparts.com

KOREX WHEEL LOADERS PERFORMANCE ADVANTAGES

KOREX takes the user's convenient maintenances as the important design concept. All maintenance points are easily accessible to improve the safety, shorten the maintenance time, and ease the daily maintenances.

POWERFUL WHEEL LOADER KD SERIES



• ENLARGED BUCKET CAPACITY

The high performance bucket is installed to increase the fullness coefficient, guarantee the maximum material loading volume.



• BREAKOUT FORCE AND LIFTING TIME

With $\geq 260\text{kN}$ breakout force and $\leq 6.5\text{s}$ lifting time, this product features stronger and more efficient operations.



• RADIATOR WITH LARGE FIN SPACING

The fan incorporates the reverse rotation function to ease the cleaning of the radiator.



• NEW SKELETON STRUCTURE ENGINE HOOD

The engine oil filter, fuel filter, and transmission filter are easily accessible to achieve convenient maintenances.



• THE EXTENDED WHEELBASE

Optimized by 3D simulation meet the operation needs under severe working conditions.



CORE COMPONENTS

- Heavy-duty design ensures high firmness and reliability
- Maintenance-free high reliability brake system



ENGINE

- Intelligently adjust the power curve to meet multiple working modes to reach efficient fuel saving aim.
- It has great advantage in low speed&large torque conditions and it also has stable&strong power performance in high strength and long time working conditions.



TRANSMISSION

- The transmission adopts automatic shifting gearbox, it is durable and reliable that can provide long service time.
- Equipped with electronic control shifting lever which has small shift control force to reduce operator's labor intensity and it has function to realize efficient switching.



AXLES

- Main reducer and wheel hub are reinforced, the service lives rise 30%.



CAB

- Integrated closed skeleton structure cab which has great vision, equipped with air conditioning and high-back mechanical suspension seat, that make operator more comfortable.



FRAME AND ARTICULATION

- New reinforced front and rear frames with patented composite articulated structure went through million times fatigue experimental, intensive experimental, job site test, to reach super strong payload capacity.



HYDRAULIC SYSTEM

- The hydraulic system is fix&variable system and the steering pump is piston pump with high bearing pressure and high reliability features.

ATTACHMENT



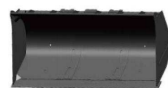
- LARGER BUCKET



- LOG GRAPPLE



- ROCK BUCKET



- COAL BUCKET



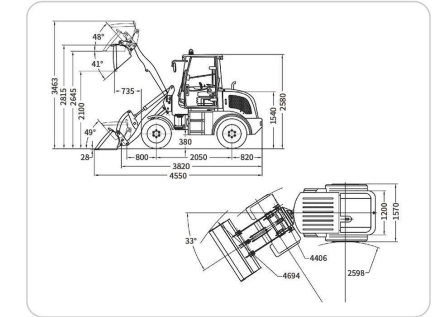
- SIDE-DUMP BUCKET

WHEEL LOADER KL408

- The proven linkage structure is very efficient which has big breakout force, quick movement and high lifting capacity features.



TECHNICAL PARAMETER



SPECIFICATION

KL408

	Model	Unit	KL408
Engine	Engine Brand/Model	-	Changchai/ZN390Q
	Rated Power	Kw	25
	Rated Speed	r/min (rpm)	2,400
	Fuel consumption ration in standard working condition	g/kw.h	276
Bucket	Max. Torque	N.m	109
	Bucket Capacity	m ³	0.38
	Max. Breakout force	kg	22
	Net Weight	kg	3,100
	Loading capacity	kg	800
Tyre	Tyre specification	-	31x15.5-15
Wheelbase	Wheelbase	mm	2,070
Operating	Min. Turning radius	mm	3,905
Overall Dimensions	Max. Dumping Reach	mm	778
	Wheel Thead	mm	1,200
Brake System	Service Brake	-	Mechanical, Drum Brake
	Parking Brake	-	Manual disk Brake
Hydraulic System	System working pressure	Mpa	18
	Boom lifting time	s	3
	Fuel tank capacity	L	70
	Oil Flow	L/min	50
	Lifting Time	s	5

* Structure and specification are subject to change without notice.

* In case there is any difference between the description of the machine and the substantial machine, the substantial machine should govern.

WHEEL LOADER KL408T

The proven linkage structure is very efficient which has big breakout force, quick movement and high lifting capacity features.



SPECIFICATION

KL408T

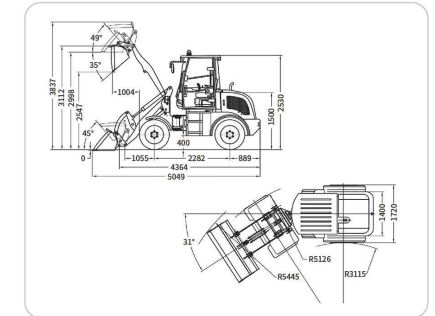
	Model	Unit	KL406
Engine	Engine Brand/Model	-	Changchai/ZN390Q
	Type	-	In-line Arrangement, water-coolde, 4-cycle diesel engine
	Rated Power	Kw	25
	Rated Speed	r/min (rpm)	2,400
	Fuel consumption ration in standard working condition	g/kw.h	≤265
Bucket	Max. Torque	N.m	109/1,680
	Bucket Capacity	m ³	0.38
	Bucket Width	mm	1,500
	Rated Load	kg	800
	Max. Breakout force	kN	22
	Max. Tractive force	kN	20
Transmission System	Net Weight	kg	2,700
	Type	-	Power Gearbox Model shift normally engaged straight gear
	Max. Speed	km/h	23
Tyre	Shift	-	Mechanical, 2forward shift, 2 reverse shift
	Tyre specification	-	31x15.5-15
Wheelbase	Front Tyre Pressure	kPa	(Forn/Rear)310/310
	Wheelbase	mm	2,170
Operating	Min. Turning radius	mm	3,905
	Max. Grade Ability	°	20
	Overall Length(bucket on ground)	mm	4,706
Overall Dimensions	Overall Height	mm	2,530
	Overall Width	mm	1,570
	Max. Dumping Height	mm	2,120
	Max. Dumping Reach	mm	800
	Min. Ground clearance	mm	260
	Lifting Distance	mm	1,360
	Wheel Thead	mm	1,200
Brake System	Service Brake	-	Mechanical, drum brake
	Parking Brake	-	Manual disk brake
Hydraulic System	System working pressure	Mpa	18
	Boom lifting time	s	3
	Total Time	s	7.4
	Fuel tank capacity	L	55
	Function of leveling automatically	-	Yes

WHEEL LOADER KL412

The proven linkage structure is very efficient which has big breakout force, quick movement and high lifting capacity features.



TECHNICAL PARAMETER



SPECIFICATION

KL412

	Model	Unit	KL408
Engine	Engine Brand/Model	-	C490BPG
	Rated Power	Kw	36.8
	Rated Speed	r/min (rpm)	2,650
	Fuel consumption ration in standard working condition	g/kw.h	≤230
Bucket	Bucket Capacity	m ³	0.52
	Type	-	Heavy-duty bolt on teeth
	Max. Breakout force	kg	28
	Net Weight	kg	2,300
Transmission System	Loading capacity	kg	1,200
	Max. Driving Speed(I/II)	km/h	5/11
Tyre	Tyre specification	-	20.5/70-16
Wheelbase	Wheelbase	mm	2,282
Operating	Steering System	-	Articulated Frame With Hydraulic Power Steerin
	Min. Turning radius	mm	4,389
	Driving System	-	Hydraulic converter
Overall Dimensions	Overall Length(bucket on ground)	mm	5,281
	Overall Width	mm	1,740
	Max. Dumping Height	mm	2,487
	Max. Dumping Reach	mm	858
Brake System	Service Brake	-	4-Wheel Hydraulic Spread-shoed Brake
	Parking Brake	-	Hand operated
Hydraulic System	System working pressure	Mpa	17
	Oil Flow	L/min	66
	Lifting Time	s	7

* Structure and specification are subject to change without notice.

* In case there is any difference between the description of the machine and the substantial machine, the substantial machine should govern.

WHEEL LOADER KL412T

The proven linkage structure is very efficient which has big breakout force, quick movement and high lifting capacity features.



SPECIFICATION

KL412T

	Model	Unit	KL412T
Engine	Engine Brand/Model	-	C490BPG
	Type	-	In-line Arrangement, water-coolde, 4-cycle diesel engine
	Rated Power	Kw	36.8
	Rated Speed	r/min (rpm)	2,650
	Fuel consumption ration in standard working condition	g/kw.h	≤230
Bucket	Bucket Capacity	m ³	0.53
	Bucket Width	mm	1,740
	Type	-	Heavy-duty bolt on teeth
	Rated Load	kg	1,200
	Net Weight	kg	4,000
Transmission System	Type	-	Fixed-spindle power shift
	Shift gear control oil pressure	Mpa	1.2-1.5
	Rated Speed	rpm	2,650
Tyre	Tyre specification	-	20.5/70-16
Wheelbase	Wheelbase	mm	1,520
Operating	Steering System	-	Articulated Frame With Hydraulic Power Steering
Overall Dimensions	Overall Length(bucket on ground)	mm	Articulated Frame With Hydraulic Power Steering
	Overall Width	mm	5,234
	Max. Dumping Height	mm	1,850
	Max. Dumping Reach	mm	2,487
	Min. Base to the ground	mm	858
Brake System	Service Brake	-	4-Wheel Hydraulic Spread-shoed Brake
	Parking Brake	-	Hand operated

* Structure and specification are subject to change without notice.

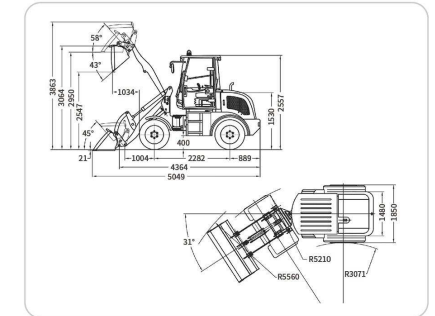
* In case there is any difference between the description of the machine and the substantial machine, the substantial machine should govern.

WHEEL LOADER KL416

The proven linkage structure is very efficient which has big breakout force, quick movement and high lifting capacity features.



TECHNICAL PARAMETER



SPECIFICATION

KL416

	Model	Unit	KL416
Engine	Engine Brand/Model	-	Xinchai/498 BT1
	Type	-	In-line Arrangement, water-coolde, 4-cycle diesel engine
	Rated Power	Kw	36.8
	Rated Speed	r/min (rpm)	2,400
Bucket	Bucket Capacity	m ³	0.73
	Bucket Width	mm	2,000
	Type	-	Heavy-duty bolt on teeth
	Max. Breakout force	kg	28
	Max. Tractive force	kN	33
	Net Weight	kg	4,400
Transmission System	Loading capacity	kg	1,600
	Type	-	Fixed-spindle Power Shift
	Shift gear control oil pressure	Mpa	1.2-1.5
Tyre	Tyre specification	-	23.5/70-15 Agricultural Tires
Wheelbase	Wheelbase	mm	1,520
Operating	Steering System	-	Articulated Frame With Hydraulic Power Steering
Overall Dimensions	Overall Length(bucket on ground)	mm	1,850
	Overall Width	mm	2,453
	Max. Dumping Height	mm	891
	Max. Dumping Reach	mm	275
Brake System	Min. Base to the ground	mm	1,200
	Service Brake	-	Air-assist Hydraulic, Disc Brake
Hydraulic System	Parking Brake	-	Hand Operated
	Track	mm	1,500
	System working pressure	Mpa	17
Hydraulic System	Oil Flow	L/min	72
	Lifting Time	s	7

* Structure and specification are subject to change without notice.

* In case there is any difference between the description of the machine and the substantial machine, the substantial machine should govern.

WHEEL LOADER KL416T

The proven linkage structure is very efficient which has big breakout force, quick movement and high lifting capacity features.



SPECIFICATION

KL416T

	Model	Unit	KL416T
Engine	Engine Brand/Model	-	Xinchai/498 BT1
	Type	-	In-line Arrangement, water-coolde, 4-cycle diesel engine
	Rated Power	Kw	36.8
	Rated Speed	r/min (rpm)	2,400
	Fuel consumption ration in standard working condition	g/kw.h	230
Bucket	Bucket Capacity	m ³	0.73
	Bucket Width	mm	2,000
	Type	-	Heavy-duty bolt on teeth
	Rated Load	kg	1,600
	Max. Breakout force	kg	28
	Max. Tractive force	kN	33
	Net Weight	kg	4,400
Transmission System	Type	-	Fixed-spindle power shift
	Shift gear control oil pressure	Mpa	1.2-1.5
	Rated Speed	rpm	2,400
Tyre	Tyre specification	-	23.5/70-15 Agricultural tires
Wheelbase	Wheelbase	mm	1,520
Operating	Steering System	-	Articulated frame with hydraulic power steering
	Min. Turning radius	mm	4,451
	Driving System	-	Hydraulic converter
Overall Dimensions	Overall Length(bucket on ground)	mm	5,267
	Overall Height	mm	2,535
	Overall Width	mm	1,850
	Max. Dumping Height	mm	2,453
	Max. Dumping Reach	mm	891
Brake System	Min. Base to the ground	mm	275
	Service Brake	-	Air-assist hydraulic, disc brake
	Parking Brake	-	Hand operated
Track	Track	mm	1,500

* Structure and specification are subject to change without notice.

* In case there is any difference between the description of the machine and the substantial machine, the substantial machine should govern.

WHEEL LOADER KL420

The proven linkage structure is very efficient which has big breakout force, quick movement and high lifting capacity features.



SPECIFICATION

KL420

	Model	Unit	KL420
Engine	Engine Brand/Model	-	Xichai/4DX21-72
	Type	-	In-line Arrangement, water-coolde, 4-cycle diesel engine
	Rated Power	Kw	53
	Rated Speed	r/min (rpm)	2,400
	Max. Torque	N.m	330
Bucket	Bucket Capacity	m ³	0.67
	Type	-	Heavy-duty bolt on teeth
	Rated Load	kg	2,000
	Net Weight	kg	5,000
Transmission System	Shift gear control oil pressure	Mpa	1.3±0.2
Tyre	Tyre specification	-	16/70-20
Operating	Steering System	-	Articulated Frame With Hydraulic Power Steering
	Min. Turning radius	mm	5,460
	Driving System	-	Hydraulic converter
Overall Dimensions	Overall Length(bucket on ground)	mm	5,710
	Overall Height	mm	2,800
	Overall Width	mm	2,040
Brake System	Service Brake	-	4-Wheel Hydraulic Spread-shoed Brake
	Parking Brake	-	Hand operated

* Structure and specification are subject to change without notice.

* In case there is any difference between the description of the machine and the substantial machine, the substantial machine should govern.

WHEEL LOADER KL420T

The proven linkage structure is very efficient which has big breakout force, quick movement and high lifting capacity features.



SPECIFICATION

KL420T

	Model	Unit	KL420T
Engine	Engine Brand/Model	-	Xichai/4DX21-72
	Type	-	In-line Arrangement, water-coolde, 4-cycle diesel engine
	Rated Power	Kw	53
	Rated Speed	r/min (rpm)	2,400
	Fuel consumption ration in standard working condition	g/kw.h	230
Bucket	Bucket Capacity	m ³	0.73
	Bucket Width	mm	2,000
	Type	-	Heavy-duty bolt on teeth
	Rated Load	kg	1,600
	Max. Breakout force	kN	28
Transmission System	Max. Tractive force	kN	33
	Net Weight	kg	4,400
	Type	-	Fixed-spindle power shift
	Shift gear control oil pressure	Mpa	1.2-1.5
Tyre	Rated Speed	rpm	2,400
	Tyre specification	-	23.5/70-15 Agricultural tires
Wheelbase	Wheelbase	mm	1,520
Operating	Steering System	-	Articulated frame with hydraulic power steering
	Min. Turning radius	mm	4,451
	Driving System	-	Hydraulic converter
Overall Dimensions	Overall Length(bucket on ground)	mm	5,267
	Overall Height	mm	2,535
	Overall Width	mm	1,850
	Max. Dumping Height	mm	2,453
	Max. Dumping Reach	mm	891
Brake System	Min. Base to the ground	mm	275
	Service Brake	-	Air-assist hydraulic, disc brake
	Parking Brake	-	Hand operated
Track	Track	mm	1,500

WHEEL LOADER KL425

The proven linkage structure is very efficient which has big breakout force, quick movement and high lifting capacity features.



SPECIFICATION

KL425

	Model	Unit	KL425
Engine	Engine Brand/Model	-	Xichai/4DX22-96
	Type	-	In-line Arrangement, water-coolde, 4-cycle diesel engine
	Rated Power	Kw	70
	Rated Speed	r/min (rpm)	2,400
	Max. Torque	N.m	330
Bucket	Bucket Capacity	m ³	0.67
	Type	-	Heavy-duty bolt on teeth
	Rated Load	kg	2,500
	Net Weight	kg	5,500
Transmission System	Shift gear control oil pressure	Mpa	1.3±0.2
Tyre	Tyre specification	-	16/70-20
Operating	Steering System	-	Articulated Frame With Hydraulic Power Steering
	Min. Turning radius	mm	5,460
	Driving System	-	Hydraulic converter
Overall Dimensions	Overall Length(bucket on ground)	mm	5,710
	Overall Height	mm	2,800
	Overall Width	mm	2,040
Brake System	Service Brake	-	4-Wheel Hydraulic Spread-shoed Brake
	Parking Brake	-	Hand operated

* Structure and specification are subject to change without notice.

* In case there is any difference between the description of the machine and the substantial machine, the substantial machine should govern.

WHEEL LOADER KL425T

The proven linkage structure is very efficient which has big breakout force, quick movement and high lifting capacity features.



SPECIFICATION

KL425T

	Model	Unit	KL425T
Engine	Engine Brand/Model	-	Xichai/4DX22-96
	Type	-	In-line Arrangement, water-cooled, 4-cycle diesel engine
	Rated Power	Kw	70
	Rated Speed	r/min (rpm)	2,400
	Max. Torque	N.m	330
Bucket	Bucket Capacity	m ³	0.72
	Type	-	Heavy-duty bolt on teeth
	Rated Load	kg	2,500
	Net Weight	kg	5,500
Transmission System	Type	-	Fixed-spindle(Gearbox Model 280)
	Shift gear control oil pressure	Mpa	1.3±0.2
	Shift	-	F2/R2
Tyre	Tyre specification	-	16/70-20
Operating	Steering System	-	Articulated frame with hydraulic power steering
	Min. Turning radius	mm	5,460
	Driving System	-	Hydraulic converter
Overall Dimensions	Overall Length(bucket on ground)	mm	5,710
	Overall Height	mm	2,800
	Overall Width	mm	2,040
Brake System	Service Brake	-	4-Wheel Hydraulic Spread-shoed Brake
	Parking Brake	-	Hand operated

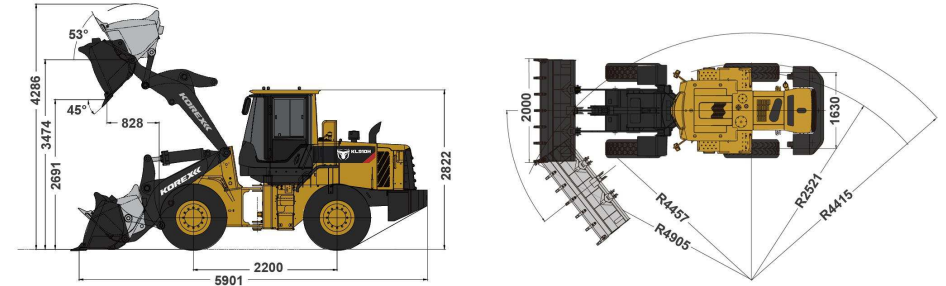
* Structure and specification are subject to change without notice.

* In case there is any difference between the description of the machine and the substantial machine, the substantial machine should govern.

WHEEL LOADER KL910H

The proven linkage structure is very efficient which has big breakout force, quick movement and high lifting capacity features.

EXTERIOR DRAWING



SPECIFICATION

KL910H

	Model	Unit	KL910H	
	Operating Weight with Standard Bucket	kg	5,940	
	Rated Load	kg	1,800	
	Bucket Capacity	m ³	0.9-1.0	
	Wheel Base	mm	2,200	
	Overall Dimension	mm	5,901x2,000x2,822	
	Max. Drawbar Force	KN	55	
	Breakout Force	KN	63	
	Dump Clearance	mm	2,691	
	Engine	Brand	-	Yituo
		Model	-	YT4B4-22
Rated Power		kW	60	
Rated Speed		r/min	2,200	
Transmission System	Displacement	L	4.76	
	Transmission Type	-	Countershaft, power shift	
	Transmission Gears	-	F2/R2	
	Torque Converter Type	-	Single Stage, 3 Elements	
Axle	Maker & Type	-	ZL15	
	Forward I/Reverse I	-	9.8/9.6	
	Forward II/Reverse II	-	24/23.6	
	Main Drive Type	-	Spiral Bevel Gear, Single Stage	
Implement Hydraulic	Final Drive Reduction Type	-	Planetary Type, Single Stage	
	Rear - Oscillating +/-	°	±12	
	Implement System Type	-	Open center	
	Boom Raise Time	s	4.35	
Brake System	Hydraulic Cycle Time	s	7.8	
	System Pressure Setting	Mpa	17	
	Service Brake	-	Dry&caliper, air to oil control	
Steering System	Parking Brake	-	Disk & Caliper	
	System Type	-	Shared flow	
	Steering Pump Type	-	Gear pump	
	System Pressure Setting	Mpa	14	
Tires	Steering Angle (L/R)	°	35±1	
	Size	-	16/70-20	
	Type	-	PR	
	Layer	-	14	
	Textured Type	-	L-3	

* Structure and specification are subject to change without notice.

* In case there is any difference between the description of the machine and the substantial machine, the substantial machine should govern.

WHEEL LOADER KL918H

The proven linkage structure is very efficient which has big breakout force, quick movement and high lifting capacity features.



SPECIFICATION

Model		Unit	KL918H
Operating Weight		kg	6,000
Rated Bucket Capacity		m ³	1.1
Engine	Brand	-	YTO
	Model	-	LR4B3
	Type	-	Direct injection, Natural aspirate, Water cooling
	Rated Power	kW	60
	Rated Speed	rpm	2,400
	Min. fuel consumption	g/Kw.h	242
	Max. torque	N.m	286
Transmission System	Torque converter type	-	3-elements, Single stage
	Cooling mode	-	Oil cooling pressure circulating
	Transmission type	-	Mechanical control Fixed shaft-power shift
	Shifts (Forward/Backward)	-	F2/R2
Axles	Gear ratio of main drive	-	5.83
	Gear ratio of hub reduction	-	4.4
	Max. gradient ability	°	25
Steering System	Type	-	Middle articulated frame, full hydraulic steering
	Steering angle	°	±35
	Min. steering radius(center of front wheel)	mm	4,600
	System pressure	Mpa	16
Working Equipment	No. of cylinders Bore×Stroke	mm	2-φ63×300
	Dumping clearance	mm	2,750
No. of cylinders Bore×Stroke	Dumping reach	mm	920
	Lifting cylinder	mm	2- φ80×530
	Lifting time	s	4.5
	Lowering time	s	3
Tyre	Dumping time	s	1
	Tyre size	-	16/70-20PR
Refill Capacity	Fuel tank	L	100
	Engine oil	L	16
	T/C and T/M	L	28
	Hydraulic tank	L	100
	Brake system	L	3
	Axles main drive	L	2x10
Traveling speed	I-gear(F/R)	km/h	10/10
	II-gear(F/R)	km/h	27/27

KL918H

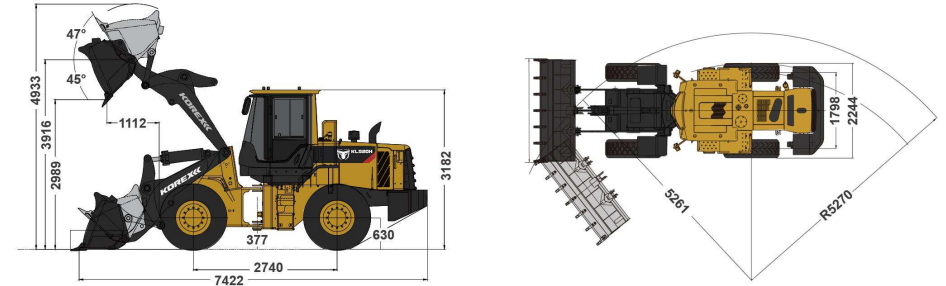
* Structure and specification are subject to change without notice.

* In case there is any difference between the description of the machine and the substantial machine, the substantial machine should govern.

WHEEL LOADER KL920H

The proven linkage structure is very efficient which has big breakout force, quick movement and high lifting capacity features.

EXTERIOR DRAWING



SPECIFICATION

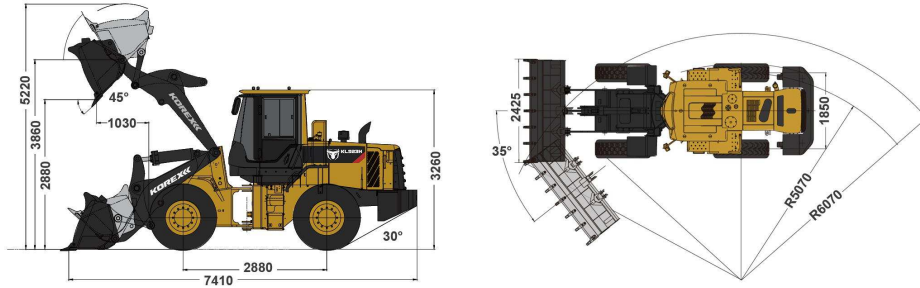
Model		Unit	KL920H
Operating Weight with Standard Bucket		kg	10,133
Rated Load		kg	3,000
Bucket Capacity		m ³	1.5-2.5
Wheel Base		mm	2,740
Overall Dimension		mm	7,422x2,354x3,182
Breakout Force		KN	113
Dump Clearance		mm	2,989
Articulated Angle		°	37±1
Engine	Brand	-	Weichai
	Model	-	WP6G125E22
	Rated Power	kW	92
	Rated Speed	r/min	2200
	Displacement	L	6.754
Transmission System	Transmission Type	-	Countershaft, power shift
	Transmission Gears	-	F4/R2
	Torque Converter Type	-	Single Stage, 3 Elements
	Maker & Type	-	TR100
	Forward I/Reverse I	-	7.9/9.7
	Forward II/Reverse II	-	14/31
	Forward III/Reverse III	-	25/NA
Axle	Forward IV/Reverse IV	-	39/NA
	Main Drive Type	-	Spiral Bevel Gear, Single Stage
	Final Drive Reduction Type	-	Planetary Type, Single Stage
	Rear - Oscillating +/-	°	±12
Implement Hydraulic	Implement System Type	-	Gear pump
	Boom Raise Time	s	4.65
	Hydraulic Cycle Time	s	8.34
	System Pressure Setting	Mpa	18
Brake System	Service Brake	-	Dry&caliper, air to oil control
	Parking Brake	-	Drum type shoe brake, spring applied & oil released
Steering System	System Type	-	Shared Flow
	Steering Pump Type	-	Gear pump
Tires	System Pressure Setting	Mpa	14
	Size	-	17.5-25
	Type	-	PR
	Layer	-	12
	Textured Type	-	L-3

KL920H

WHEEL LOADER KL923H

The proven linkage structure is very efficient which has big breakout force, quick movement and high lifting capacity features.

EXTERIOR DRAWING



SPECIFICATION

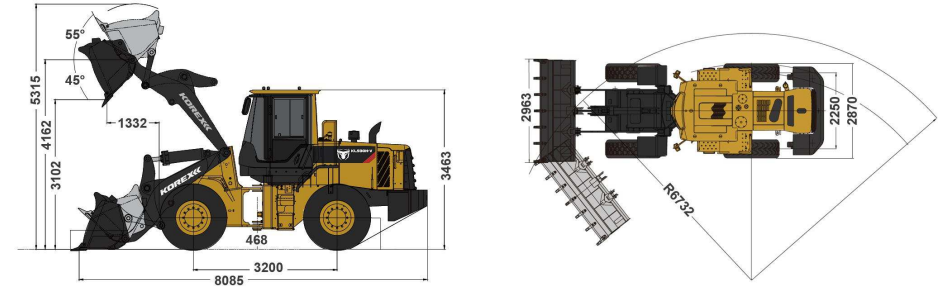
KL923H

Model	Unit	KL923H	
Operating Weight	kg	11,850	
Rated Bucket Capacity	m ³	2.5	
Engine	Brand	WEICHAI	
	Model	WP6G140E22	
	Rated Power	105	
	Rated Speed	2,200	
	Max. torque	N.m	560
Transmission System	Torque converter type	1 stage 2 phase 4 elementsent	
	Modulus of Converter	4.566	
	Transmission type	Power shift planetary gearbox	
	Gear Shift	F2/R1	
Axles	Max. Speed	38.0	
	Axles Type	Dry axles	
Steering System	Final Decelerate Type	Planetary reduction with spur gear	
	Type	Double Pump confluent priority load sensing	
	Steering angle	°	38(left/right)
Working Equipment	Min. steering radius(center of front wheel)	mm	6,070
	No. of cylinders BorexStroke	mm	6-105x130
	Max. breakout force	kN	85
	Rated Load	kg	4,000
	Max. Traction Force	kn	105
	Max. Gradeability	°	30
	Dumping clearance	mm	2,880
	Dumping reach	mm	1,150
	Wheel Tread	mm	1,850
	Wheelbase	mm	2,880
Overall Dimension(LxWxH)	mm	7,410x2,425x3,260	
Hydraulic System	Working Pressure	Mpa	18
	Boom Lifting Time	s	5.0
	Total Cycle Time	s	9.8
Tyre	Tyre size	-	20.5-25
	Ply	-	16
	Front Tyre Pressure	Mpa	0.33-0.35
Brake System	Rear Tyre Pressure	Mpa	0.28-0.30
	Service Brake	-	Air push oil to brake caliper
Refill Capacity	Parking brake	-	Air brake
	Fuel tank	L	150
	Engine oil	L	14.5
	Hydraulic tank	L	110

WHEEL LOADER KL930H-V

The proven linkage structure is very efficient which has big breakout force, quick movement and high lifting capacity features.

EXTERIOR DRAWING



SPECIFICATION

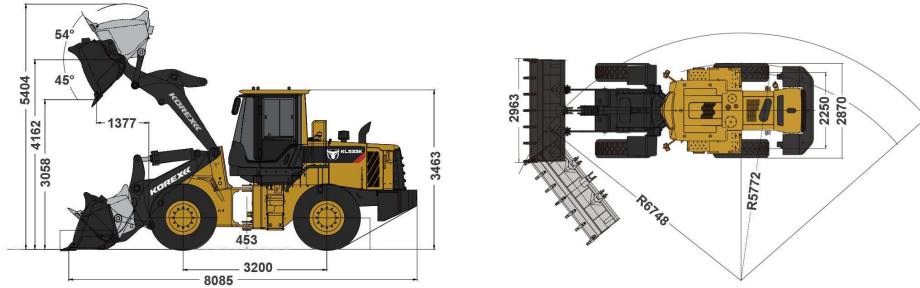
KL930H-V

Model	Unit	KL930H-V	
Operating Weight with Standard Bucket	kg	16,640	
Rated Load	kg	5,000	
Bucket Capacity	m ³	2.6-5.5	
Wheel Base	mm	3,200	
Overall Dimension	mm	8,085x2,963x3,463	
Max. Drawbar Force	KN	171	
Breakout Force	KN	177	
Dump Clearance	mm	3,102	
Engine	Brand	-	Weichai
	Model	-	WD10G220E23
	Rated Power	kW	162
	Rated Speed	r/min	2,000
	Displacement	L	9.7
Transmission System	Transmission Type	-	Countershaft, power shift
	Transmission Gears	-	F4/R4
	Torque Converter Type	-	Single Stage, 3 Elements
	Maker & Type	-	Tr200
	Forward I/Reverse I	-	7.9/7.9
Axle	Forward II/Reverse II	-	14/14
	Forward III/Reverse III	-	22.9/22.9
	Forward IV/Reverse IV	-	39.4/39.4
	Main Drive Type	-	Spiral Bevel Gear, Single Stage
	Final Drive Reduction Type	-	Planetary Type, Single Stage
Implement Hydraulic	Rear - Oscillating +/-	°	±11
	Implement System Type	-	Open center
	Boom Raise Time	s	5.1
	Hydraulic Cycle Time	s	9.3
	System Pressure Setting	Mpa	17
Brake System	Service Brake	-	Dry&caliper,air to oil control
	Parking Brake	-	Drum/shoe
Steering System	System Type	-	Shared flow
	Steering Pump Type	-	Gear pump
	System Pressure Setting	Mpa	16
Tires	Steering Angle (L/R)	°	38±1
	Size	-	23.5-25
	Type	-	PR
	Layer	-	16
	Textured Type	-	L-3/E-3

WHEEL LOADER KL933K

The proven linkage structure is very efficient which has big breakout force, quick movement and high lifting capacity features.

EXTERIOR DRAWING



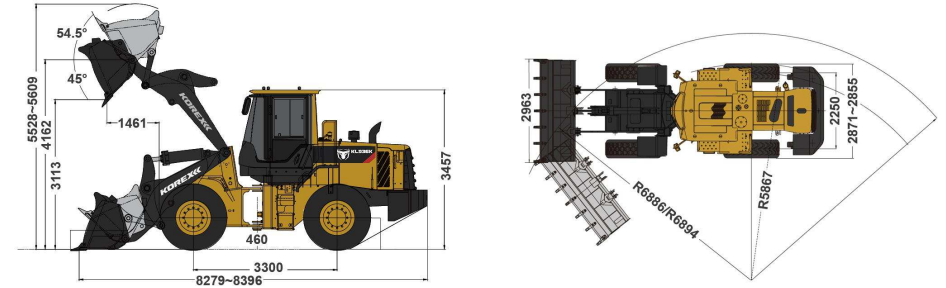
SPECIFICATION

Model		Unit	KL933K
Operating Weight with Standard Bucket		kg	16,800
Rated Load		kg	5,000
Bucket Capacity		m ³	2.7-4.5
Wheel Base		mm	3,200
Overall Dimension		mm	8,085x2,963x3,463
Breakout Force		KN	168
Dump Clearance		mm	3,058
Articulated Angle		°	38±1
Engine	Brand	-	Weichai
	Model	-	WD10G
	Rated Power	kW	162
	Rated Speed	r/min	2,000
	Displacement	L	9.726
Transmission System	Transmission Type	-	Countershaft, power shift
	Transmission Gears	-	F4/R4
	Torque Converter Type	-	Single Stage, 3 Elements
	Maker & Type	-	TR200
	Forward I/Reverse I	-	7.8/7.8
	Forward II/Reverse II	-	15/15
	Forward III/Reverse III	-	22/22
Axle	Main Drive Type	-	Spiral Bevel Gear, Single Stage
	Final Drive Reduction Type	-	Planetary Type, Single Stage
	Rear - Oscillating +/-	°	±11
Implement Hydraulic	Implement System Type	-	Twin pump flow merging hydraulic system
	Boom Raise Time	s	5.13
	Hydraulic Cycle Time	s	9.5
	System Pressure Setting	Mpa	17
Brake System	Service Brake	-	Dry&caliper,air to oil control
	Parking Brake	-	Drum type shoe brake, spring applied & oil released
Steering System	System Type	-	Flow amplifying
	Steering Pump Type	-	Gear pump
	System Pressure Setting	Mpa	16
Tires	Steering Angle (L/R)	°	38±1
	Size	-	23.5-25
	Type	-	Bias
	Layer	-	16
	Textured Type	-	L3/E3

WHEEL LOADER KL936K

The proven linkage structure is very efficient which has big breakout force, quick movement and high lifting capacity features.

EXTERIOR DRAWING



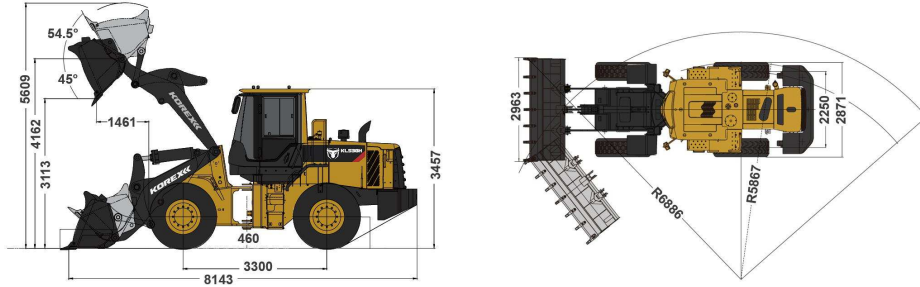
SPECIFICATION

Model		Unit	KL936K	KL936K
Operating Weight with Standard Bucket		kg	16,900	17,100
Rated Load		kg	5,000	5,000
Bucket Capacity		m ³	2.7-4.5	2.7-4.5
Wheel Base		mm	3,300	3,300
Overall Dimension		mm	8,279x2,963x3,457	8,396x2,963x3,456
Breakout Force		KN	178	173
Dump Clearance		mm	3,113	3,113
Articulated Angle		°	38±1	38±1
Engine	Brand	-	Weichai	Cummins
	Model	-	WD10G	L9.3
	Rated Power	kW	162	162
	Rated Speed	r/min	2,000	2,000
	Displacement	L	9.726	9.3
Transmission System	Transmission Type	-	Countershaft, power shift	Countershaft, power shift
	Transmission Gears	-	F4/R4	F4/R4
	Torque Converter Type	-	Single Stage, 3 Elements	Single Stage, 3 Elements
	Maker & Type	-	TR200	TR200
	Forward I/Reverse I	-	7.8/7.8	7.8/7.8
	Forward II/Reverse II	-	15/15	15/15
	Forward III/Reverse III	-	22/22	22/22
Axle	Main Drive Type	-	Spiral Bevel Gear, Single Stage	Spiral Bevel Gear, Single Stage
	Final Drive Reduction Type	-	Planetary Type, Single Stage	Planetary Type, Single Stage
	Rear - Oscillating +/-	°	±11	±11
Implement Hydraulic	Implement System Type	-	Single load sensing flow sharing system	Single load sensing flow sharing system
	Boom Raise Time	s	5.13	5.13
	Hydraulic Cycle Time	s	9.3	9.3
	System Pressure Setting	Mpa	18	18
Brake System	Service Brake	-	Dry&caliper,air to oil control	Dry&caliper,air to oil control
	Parking Brake	-	Drum type shoe brake, spring applied & oil released	Drum type shoe brake, spring applied & oil released
Steering System	System Type	-	Flow amplifying	Flow amplifying
	Steering Pump Type	-	Piston pump	Piston pump
	System Pressure Setting	Mpa	16	16
Tires	Steering Angle (L/R)	°	38±1	38±1
	Size	-	23.5-25	23.5-25
	Type	-	Bias	Bias
	Layer	-	16	16
	Textured Type	-	L3/E3	L3

WHEEL LOADER KL938H

The proven linkage structure is very efficient which has big breakout force, quick movement and high lifting capacity features.

EXTERIOR DRAWING



SPECIFICATION

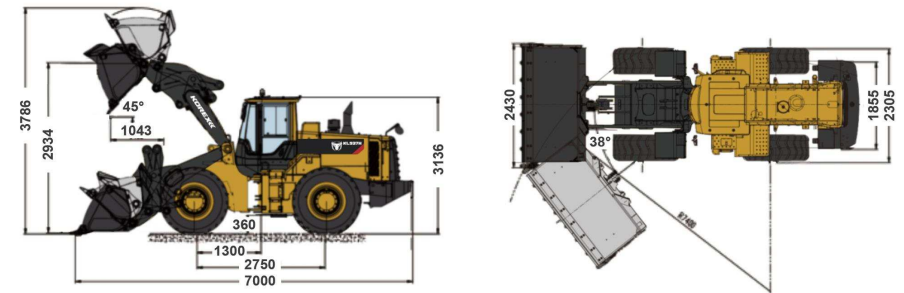
Model		Unit	KL938H
Operating Weight with Standard Bucket		kg	17,158
Rated Load		kg	5,000
Bucket Capacity		m ³	2.6-4
Wheel Base		mm	3,300
Overall Dimension		mm	8,143x2,963x3,457
Max. Drawbar Force		KN	170
Breakout Force		KN	178
Dump Clearance		mm	3,113
B-Pin Height		mm	4,162
Engine	Brand	-	Weichai
	Model	-	WD10G220E21
	Rated Power	kW	162
	Rated Speed	r/min	2,200
	Displacement	L	9.7
Transmission System	Transmission Type	-	Countershaft, Powershift, EH Control
	Transmission Gears	-	F4/R3
	Torque Converter Type	-	Single Stage, 3 Elements
	Maker & Type	-	160
	Forward I/Reverse I	-	7.2/7.2
	Forward II/Reverse II	-	13/13
	Forward III/Reverse III	-	23/23
Axle	Forward IV/Reverse IV	-	37/NA
	Main Drive Type	-	Spiral Bevel Gear, Single Stage
	Final Drive Reduction Type	-	Planetary Type, Single Stage
Implement Hydraulic	Rear - Oscillating +/-	°	±11
	Implement System Type	-	Open Center
	Boom Raise Time	s	5.37
	Hydraulic Cycle Time	s	9.3
Brake System	System Pressure Setting	Mpa	18
	Service Brake	-	Dry&Caliper, Air to Oil Control
	Parking Brake	-	Drum/Shoe
Steering System	System Type	-	Single Load Sensing
	Steering Pump Type	-	Piston Pump
	System Pressure Setting	Mpa	16
	Steering Angle (L/R)	°	38±1
Tires	Size	-	23.5-25
	Type	-	Bias
	Layer	-	16
	Textured Type	-	L-3

KL938H

WHEEL LOADER KL937H

The proven linkage structure is very efficient which has big breakout force, quick movement and high lifting capacity features.

EXTERIOR DRAWING



SPECIFICATION

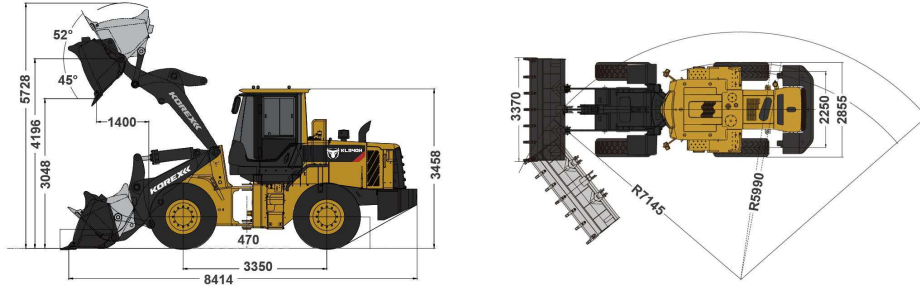
Model		Unit	KL937H
Operating Weight		kg	10,200
Rated Bucket Capacity		m ³	1.7
Engine	Brand	-	Cummins / WeiChai
	Model	-	6BT5.9 / WP6G125E22
	Type	-	Direct injection, turbocharged, water cooling
	Rated Power	kW	97/92
	Rated Speed	rpm	2,200
Transmission System	Torque converter type	-	Single stage, Single phase and 3-elements
	Cooling mode	-	Oil cooling pressure circulating
	Transmission type	-	Cylindrical helical gear parallel shaft type
Axles	Shifts (Forward/Backward)	-	F4/R2
	Max. drawing force	kN	96
	Gear ratio of main drive	-	4.222
	Gear ratio of hub reduction	-	4.8
	Max. gradient ability	°	30
Steering System	Type	-	Middle articulated frame, load sensing full hydraulic steering
	Steering angle	°	±38
	Min. steering radius(center of front wheel)	mm	4,885
	System pressure	Mpa	16
	Flow rate at engine rated speed	L/min	220
Working Equipment	No. of cylinders Bore×Stroke	mm	2-φ70x357
	Max.breakout force	kN	96
	Dumping clearance	mm	2,934
	Dumping reach	mm	1,043
	Tipping load full turn	kg	5,880
	Flow rate at engine rated speed	L/min	220
	System operation pressure	Mpa	16
No. of cylinders Bore×Stroke	Lifting cylinder	mm	2-φ125x697
	Tilting cylinder	mm	1-φ150x434
	Lifting time	s	5.2
	Lowering time	s	3.0
Tyre	Dumping time	s	1.1
	Tyre size	-	17.5-25-12PR
Refill Capacity	Fuel tank	L	130
	Engine oil	L	13.5L(Cummins) / 17L(WeiChai)
	T/C and T/M	L	38
	Hydraulic tank	L	120
	Brake system	L	15/15
Traveling speed	I-gear(F/R)	km/h	7.8/10.8
	II-gear(F/R)	km/h	14.7/31.6
	III-gear(F/R)	km/h	23.5
	IV-gear(F/R)	km/h	41.2

KL937H

WHEEL LOADER KL940H

The proven linkage structure is very efficient which has big breakout force, quick movement and high lifting capacity features.

EXTERIOR DRAWING



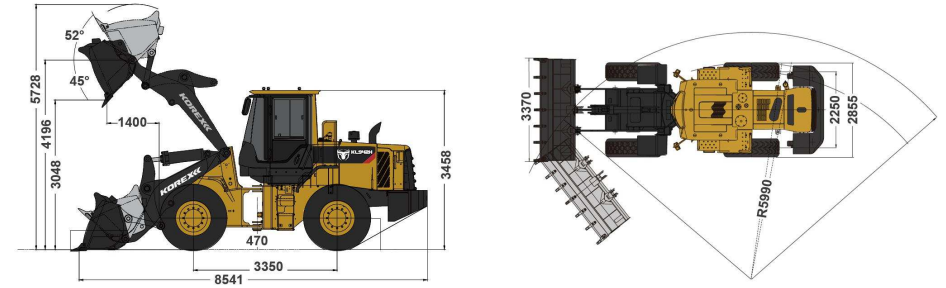
SPECIFICATION

Model		Unit	KL940H
Operating Weight with Standard Bucket		kg	17,084
Rated Load		kg	5,000
Bucket Capacity		m ³	2.6-4
Wheel Base		mm	3,300
Overall Dimension		mm	8,143x2,963x3,457
Max. Drawbar Force		KN	169
Breakout Force		KN	178
Dump Clearance		mm	3,113
B-Pin Height		mm	4,162
Engine	Brand	-	Cummins
	Model	-	6LTAA9.3
	Rated Power	kW	162
	Rated Speed	r/min	2,200
Transmission System	Displacement	L	9.3
	Transmission Type	-	Countershaft, Powershift, EH Control
	Transmission Gears	-	F4/R3
	Torque Converter Type	-	Single Stage, 3 Elements
Axle	Maker & Type	-	160
	Forward I/Reverse I	-	7.2/7.2
	Forward II/Reverse II	-	13/13
	Forward III/Reverse III	-	23/23
Implement Hydraulic	Forward IV/Reverse IV	-	37/NA
	Main Drive Type	-	Spiral Bevel Gear, Single Stage
	Final Drive Reduction Type	-	Planetary Type, Single Stage
	Rear - Oscillating +/-	°	±11
Brake System	Implement System Type	-	Open Center
	Boom Raise Time	s	5.37
	Hydraulic Cycle Time	s	9.3
Steering System	System Pressure Setting	Mpa	18
	Service Brake	-	Dry&Caliper, Air to Oil Control
	Parking Brake	-	Drum/Shoe
Tires	System Type	-	Shared Flow
	Steering Pump Type	-	Piston Pump
	System Pressure Setting	Mpa	16
Tires	Steering Angle (L/R)	°	38±1
	Size	-	23.5-25
	Type	-	Bias
	Layer	-	16
Textured Type		-	L-3

WHEEL LOADER KL942H

The proven linkage structure is very efficient which has big breakout force, quick movement and high lifting capacity features.

EXTERIOR DRAWING



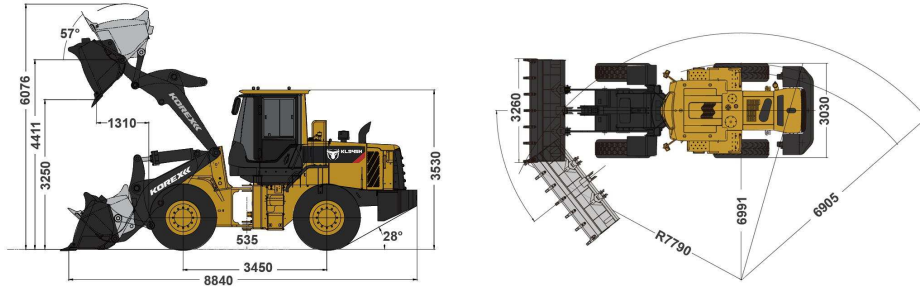
SPECIFICATION

Model		Unit	KL942H
Operating Weight with Standard Bucket		kg	20,117
Rated Load		kg	6,000
Bucket Capacity		m ³	2.9-5.5
Wheel Base		mm	3,350
Overall Dimension		mm	8,541x3,092x3,458
Max. Drawbar Force		KN	188
Breakout Force		KN	197
Dump Clearance		mm	3,051
B-Pin Height		mm	4,196
Engine	Brand	-	Weichai
	Model	-	WD10G240E201
	Rated Power	kW	178
	Rated Speed	r/min	2,200
Transmission System	Displacement	L	9.7
	Transmission Type	-	Countershaft, Powershift, EH Control
	Transmission Gears	-	F4/R3
	Torque Converter Type	-	Single Stage, 3 Elements
Axle	Maker & Type	-	160
	Forward I/Reverse I	-	6.3/6.3
	Forward II/Reverse II	-	11/11
	Forward III/Reverse III	-	19.6/19.6
Implement Hydraulic	Forward IV/Reverse IV	-	32/NA
	Main Drive Type	-	Spiral Bevel Gear, Single Stage
	Final Drive Reduction Type	-	Planetary Type, Single Stage
	Rear - Oscillating +/-	°	±11
Brake System	Implement System Type	-	Open Center
	Boom Raise Time	s	5.33
	Hydraulic Cycle Time	s	9.85
Steering System	System Pressure Setting	Mpa	18
	Service Brake	-	Dry&Caliper, Air to Oil Control
	Parking Brake	-	Drum/Shoe
Tires	System Type	-	Shared Flow
	Steering Pump Type	-	Gear Pump
	System Pressure Setting	Mpa	16
Tires	Steering Angle (L/R)	°	38±1
	Size	-	23.5-25
	Type	-	Bias
	Layer	-	20
Textured Type		-	L-3

WHEEL LOADER KL945H

The proven linkage structure is very efficient which has big breakout force, quick movement and high lifting capacity features.

EXTERIOR DRAWING



SPECIFICATION

Model		Unit	KL942H
Operating Weight with Standard Bucket		kg	23,000
Rated Load		kg	7,000
Bucket Capacity		m ³	4.2-7.0
Wheel Base		mm	3,450
Overall Dimension		mm	8,840x3,260x3,530
Breakout Force		KN	215
Dump Clearance		mm	3,250
Dump Reach		mm	1,310
Articulated Angle		°	1,310
Engine	Brand	-	Weichai
	Model	-	Weichai
Transmission System	Rated Power	kW	WP10G270
	Transmission Type	-	EH Control
	Transmission Gears	-	F4/R3
Axle	Torque Converter Type	-	Pilot Control
	Main Drive Type	-	Spiral Bevel Gear, Single Stage
	Final Drive Reduction Type	-	Planetary Type, Single Stage
Implement Hydraulic	Rear - Oscillating +/-	°	±11
	Hydraulic Cycle Time	s	9.8
Brake System	Service Brake	-	Dry&Caliper, Air to Oil Control
	Parking Brake	-	Drum/Shoe
Steering System	Steering Angle (L/R)	°	35
	Min. Turning Radius Over Bucket	mm	7,790
Tires	Size	-	26.5-25
	Type	-	Bias
	Layer	-	24
	Textured Type	-	L-3/E-3

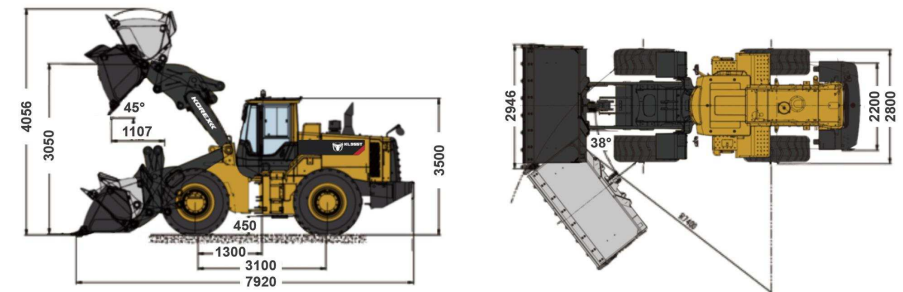
* Structure and specification are subject to change without notice.

* In case there is any difference between the description of the machine and the substantial machine, the substantial machine should govern.

WHEEL LOADER KL955T

The proven linkage structure is very efficient which has big breakout force, quick movement and high lifting capacity features.

EXTERIOR DRAWING



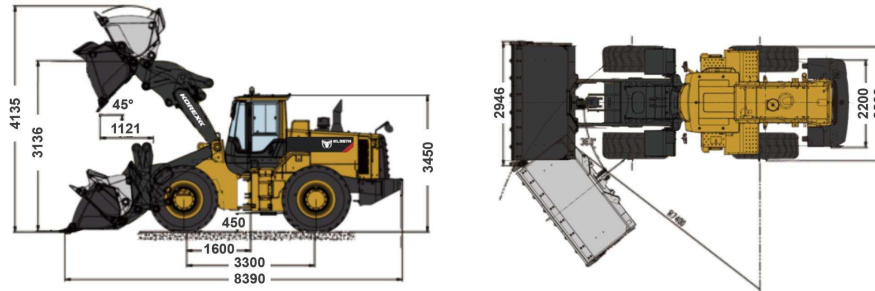
SPECIFICATION

Model		Unit	KL955T
Operating Weight		kg	16,500
Rated Bucket Capacity		m ³	3.0
Engine	Brand	-	Weichai
	Model	-	WD10G220E23
	Rated Power	kW	162
	Rated Speed	rpm	2,200
Transmission System	Min. fuel consumption	g/Kw.h	210
	Max. torque	N.m	980
	Torque converter type	-	3-elements, Single stage
	Cooling mode	-	Oil cooling pressure circulating
Axles	Transmission type	-	Power shift, spur gear constant-mesh
	Shifts (Forward/Backward)	-	F3/R3
	Gear ratio of main drive	-	4.625
	Gear ratio of hub reduction	-	4.928
Steering System	Max. gradient ability	°	30
	Type	-	Middle articulated frame, load sensing full hydraulic steering
	Steering angle	°	±38
	Min. steering radius(center of front wheel)	mm	5,970
Working Equipment	System pressure	Mpa	16
	No. of cylinders Bore×Stroke	mm	2-φ90×400
	Dumping clearance	mm	3,050±10
	Dumping reach	mm	1,107±10
Working Hydraulic System	Tipping load full turn	kg	10,000
	System operation pressure	Mpa	19
No. of cylinders Bore×Stroke	Lifting cylinder	mm	2-φ160×705
	Tilting cylinder	mm	1-φ180×530
	Lifting time	s	6.2
	Lowering time	s	3.8
Tyre	Dumping time	s	1.8
	Tyre size	-	23.5-25-16PR
Brake System	Tyre pressure	Mpa	0.274-0.294
	Service Brake	-	Flexible shaft
Refill Capacity	Fuel tank	L	250
	Engine oil	L	42
	T/C and T/M	L	45
	Hydraulic tank	L	180
	Brake system	L	2x1.5
	Axles main drive	L	2x13
Traveling speed	I-gear(F/R)	km/h	12.1/16.5
	II-gear(F/R)	km/h	37.4

WHEEL LOADER KL957H

The proven linkage structure is very efficient which has big breakout force, quick movement and high lifting capacity features.

EXTERIOR DRAWING



SPECIFICATION

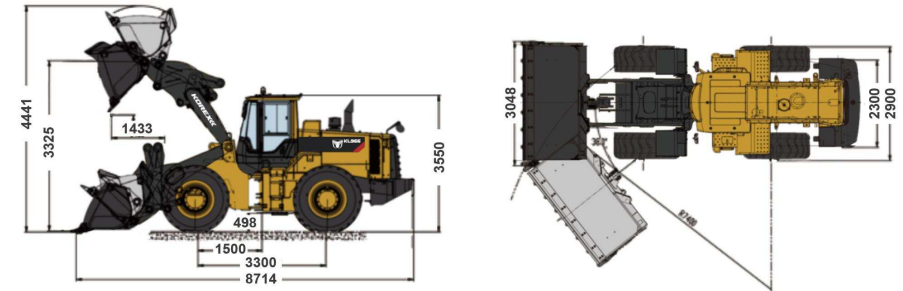
Model		Unit	KL957H
Operating Weight		kg	17,300
Rated Bucket Capacity		m ³	3.0
Engine	Brand	-	Cummins / Shangchai
	Model	-	6LTAA 9.3 220 / SC11CB220G2B1
	Rated Power	kW	162
	Rated Speed	rpm	2,200
Transmission System	Torque converter type	-	3-elements, Single stage
	Cooling mode	-	Oil cooling pressure circulating
	Transmission type	-	Power shift, spur gear constant-mesh
	Shifts (Forward/Backward)	-	F3/R3
Axles	Max. drawing force	kN	160
	Gear ratio of main drive	-	4.625
	Gear ratio of hub reduction	-	4.986
	Max. gradient ability	°	30
Steering System	Type	-	Middle articulated frame, full hydraulic steering
	Steering angle	°	±38
	Min. steering radius(center of front wheel)	mm	6,192
	System pressure	Mpa	16
	Flow rate at engine rated speed	L/min	176
Working Equipment	No. of cylinders BorexStroke	mm	2-φ90x435
	Max.breakout force	kN	170
	Dumping clearance	mm	3,136
	Dumping reach	mm	1,121
Working Hydraulic System	System operation pressure	Mpa	180
	Type	-	JHP3100A Pump
No. of cylinders BorexStroke	Lifting cylinder	mm	φ160x90x810
	Tilting cylinder	mm	φ180x90x563
	Tyre size	-	23.5-25-16PR
Brake System	Service Brake	-	Caliper disc brake, Air over oil activate 4 wheel brake
	Parking brake	-	Hand brake, Flexible shaft control clamp brake
Refill Capacity	Air pressure	kgf/cm ²	6~7.5
	Fuel tank	L	250
	Engine oil	L	24
	T/C and T/M	L	45
	Hydraulic tank	L	180
Traveling speed	F/R axles	L	36
	I-gear(F/R)	km/h	6.88/8
	II-gear(F/R)	km/h	10.8/14.3
	III-gear(F/R)	km/h	32/34.1

KL957H

WHEEL LOADER KL966

The proven linkage structure is very efficient which has big breakout force, quick movement and high lifting capacity features.

EXTERIOR DRAWING



SPECIFICATION

Model		Unit	KL966
Operating Weight		kg	19,500
Rated Bucket Capacity		m ³	3.7
Engine	Brand	-	Shangchai
	Model	-	SC11CB240.1G2B1
	Type	-	Direct injection, turbocharged, water cooling
	Rated Power	kW	174.5/178
Transmission System	Rated Speed	rpm	2,200
	Torque converter type	-	Single stage, Single phase and 3-elements
	Cooling mode	-	Oil cooling pressure circulating
	Transmission type	-	Fixed shaft power shift
Axles	Shifts (Forward/Backward)	-	F4/R3
	Max. drawing force	kN	180
	Gear ratio of main drive	-	4.875
	Gear ratio of hub reduction	-	4.94
Steering System	Type	-	Middle articulated frame, full hydraulic steering
	Steering angle	°	±38
	Min. steering radius(center of front wheel)	mm	6240
	System pressure	Mpa	16
Working Equipment	No. of cylinders BorexStroke	mm	2-φ100x425
	Max.breakout force	kN	190
	Dumping clearance	mm	3,325
	Dumping reach	mm	1,433
	Tipping load full turn	kg	13,000
	System operation pressure	Mpa	16
Working Hydraulic System	Type	-	JHP3100-GJ0020-XF Pump
	Flow rate at engine rated speed	L/min	220
No. of cylinders BorexStroke	System operation pressure	Mpa	20
	Lifting cylinder	mm	2-φ160x874
	Tilting cylinder	mm	1-φ210x575
	Lifting time	s	5.8
	Lowering time	s	3.2
	Dumping time	s	1.5
Refill Capacity	Tyre size	-	23.5-25-20PR L-3
	Fuel tank	L	350
	Engine oil	L	28
	T/C and T/M	L	45
	Hydraulic tank	L	195
Traveling speed	F/R axles	L	30+24
	Brake system	L	3
	I-gear(F/R)	km/h	6.5/6.5
	II-gear(F/R)	km/h	11.8/11.8
Traveling speed	III-gear(F/R)	km/h	23.5/23.5
	IV-gear(F/R)	km/h	37.2

KL966

