



OFFICE

Office. 603 6th floor 298, Beotkkot-ro, Geumcheon-gu, Seoul, Republic of Korea
Factory. 246 Gogol-gil, Deogyang-gu, Goyang-si, Gyeonggi-do, Republic of Korea
Tel. (+82)2038-0008
Email. sales@kscparts.com

KOREX SPIDER CRANE

KRXS200 | KRXS300 | KRXS400 | KRXS500 | KRXS900

WORKING RADIUS
5.86m × 0.20t ~ 19m × 0.35t

WEIGHT
1,700kg ~ 10,500kg

GROUND LIFTING HEIGHT
6.65m × 0.55t ~ 20.2m × 2.50t

CAPACITY
1.95t × 1.75m ~ 8.5t × 2.4m



KOREX HIGH EFFICIENCY SPIDER CRANE

POWERFUL & CONVENIENT

Spider crane is widely used in workshop equipment inspection, building curtain wall installation, cemetery stone industry and other small space occasions.



Remote control walking(optional)

The machine can be operated from a long distance, which can better protect people's safety in bad environment.



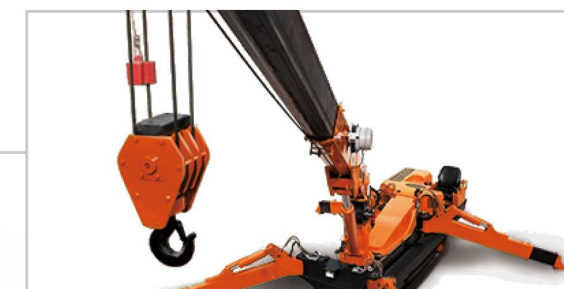
Interlock system

After the boom is restored, the outriggers can be operated and crane can move to protect the crane's walking safety.



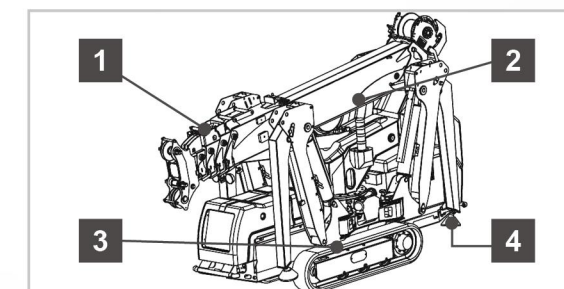
Sensor of outrigger on the ground

Each outrigger is equipped with a grounding sensor. When the outrigger leaves the ground in danger, the machine will alarm and stop working to ensure that the machine will not overturn.



Stable 5-section boom&hook

The 5-section boom supports a steady weight with a stable long extension or short contraction.



Spider Crane components

- | | | | |
|---|----------------|---|------------------|
| 1 | 5 section boom | 2 | Interlock system |
| 3 | Forklift truck | 4 | Outrigger sensor |



Boom&Double connecting cylinder

Five section boom, extended long, shrink short, true double connecting cylinder, can achieve a certain weight with the telescopic. U Boom is reasonable structure, large contact area between the boom, high strength.



Undercarriage Pontoon Construction

Chromium and titanium alloy are optional, lighter materials with longer lives. The chain does not require high tension, the load on the shaft and bearing is low, it will not slip.



KOREX SPIDER CRANE

Spider cranes are widely used in small spaces such as chemical workshop inspection and maintenance, building installation, and railway station construction.

PRODUCT



SPECIFICATION

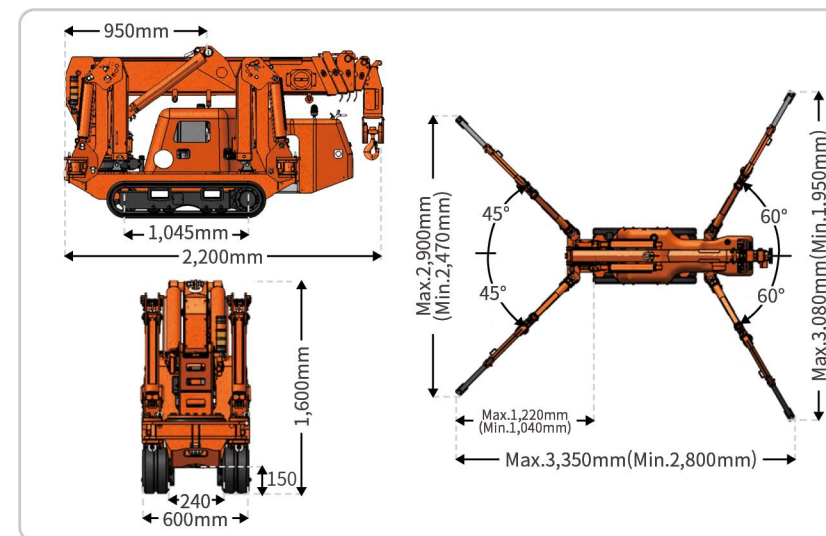
MINI CRAWLER CRANE

Model	Unit	KRXS200
Capacity	m	1.95t×1.75m
Working radius	m	5.86m×0.20t
Ground lifting height	m	6.65m×0.55t
Underground lifting height	m	10m×1t(4 fall), 20m×1t(2 fall), 40m×0.74t(1fall)
Winch device	Hook speed	m/min 0-8m/min (4 fall)
	Rope type	mm Φ8mm×50m(Minimum breaking force 60.6KN 2,160N/mm ²)
Telescopic system	Boom form	- 5 section boom, hexagonal box construction
	Boom length/Time	m/sec 1.99m-6.20m/30sec
Up and downs	Boom angle/Time	°/sec 0-70°/20sec
Slew system	Slew angle/Speed	°/sec 0-360°(continuous)/60sec
Outrigger	Outrigger active form	- Manual+Hydraulic
	Maximum extended dimensions	mm 3,350mm(Length)x2,900mm(Front)x3,080mm(Back)
Traction system	Walking way	- Hydraulic motor drive
	Walking speed	km/h 0-3.0km/h
	Grade ability	° 20°(36%)
	Ground length×width	mm 1045x180
Electric motor	Ground pressure	kpa 44kpa(0.45 kgf/cm ²)
	Voltage	v AC380V(Optional)
	Power/Speed	kw 4kw
Battery	Sound level	- Rated speed ≤60dB(A)(1m)
	Model	- KD440 (KOHLER)
	Type/Displacement	L Single cylinder air cooled/0.441L
	Rated output	kw/min 8kw/3600 min-1
	Starting method	- Electric
	Operating temperature	°C -5°C~40°C
	Fuel/Volume	L Diesel/5L
	Battery capacity	v/Ah 12v 45AH
	Specific fuel consumption	g/kw-h 240g/kw-h
	Sound Level	- Rated speed ≤80dB(A)(7m)
Operate system	Applied regulation	- EPA-Tier4
	Type of operation	- Wireless remote control and manual operation
Dimension	Operating characteristic	- Full proportional control and linkage control
	Length×Width×Height	mm 2,200mmx600mmx1,600mm
Weight	(Without optional equipment)	kg 1,700kg

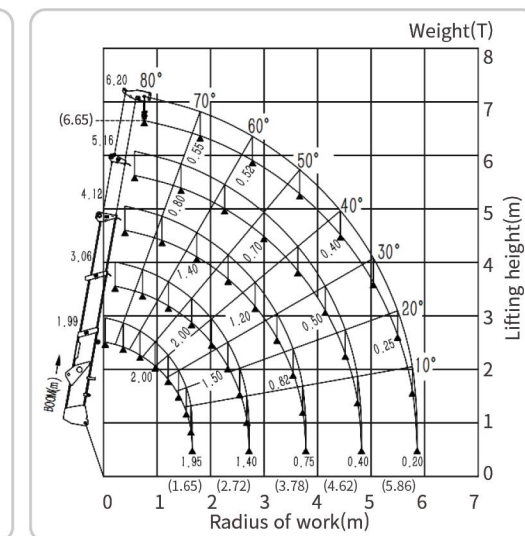
DIMENSIONS&WORKING RANGE

All the KOREX equipment is features have been designed to work in harmony to deliver every function with superior efficiency.

DIMENSIONS



WORKING RANGE



TOTAL RATED LOAD OUTRIGGERS AT MAXIMUM POSITION(4FALL)

1.99/3.06 boom		4.12 boom		5.16 boom		6.20 boom	
Working radius(m)	Total rated load(t)	Working radius(m)	Total rated load(t)	Working radius(m)	Total rated load(t)	Working radius(m)	Total rated load(t)
<1.30	1.95	<1.50	1.40	<2.00	0.80	<2.50	0.55
1.5	1.95	2.00	1.35	2.50	0.75	3.00	0.50
1.75	1.95	2.50	1.30	3.00	0.70/6666	3.50	0.48
2.00	1.80	3.00	1.10	3.5	0.68	4.00	0.45
2.50	1.50	3.50	0.85	4.00	0.60	4.50 / 505	0.40
2.72	1.40	3.78	0.75	4.50	0.45	5.00	0.38
-	-	-	-	4.82 / 82	0.40	5.50	0.25
-	-	-	-	-	-	5.86	0.20

TOTAL RATED LOAD OUTRIGGERS AT ANY OTHER POSITION(4FALL)

1.99/3.06 boom		4.12 boom		5.16 boom		6.20 boom	
Working radius(m)	Total rated load(t)	Working radius(m)	Total rated load(t)	Working radius(m)	Total rated load(t)	Working radius(m)	Total rated load(t)
<1.30	1.20	<1.50	0.40	<2.00	0.25	<2.50	0.20
1.50	1.20	2.00	0.38	2.50	0.22	3.00	0.18
1.75	0.80	2.50	0.35	3.00	0.19	3.50	0.16
2.00	0.60	3.00	0.23	3.50	0.17	4.00	0.13
2.50	0.40	3.50	0.18	4.00	0.15	4.50 / 505	0.10
2.72	0.35	3.78	0.15	4.50	0.12	5.00	0.08
-	-	-	-	4.82 / 82	0.08	5.50	0.06
-	-	-	-	-	-	5.86	0.05

KOREX SPIDER CRANE

Spider cranes are widely used in small spaces such as chemical workshop inspection and maintenance, building installation, and railway station construction.

PRODUCT



SPECIFICATION

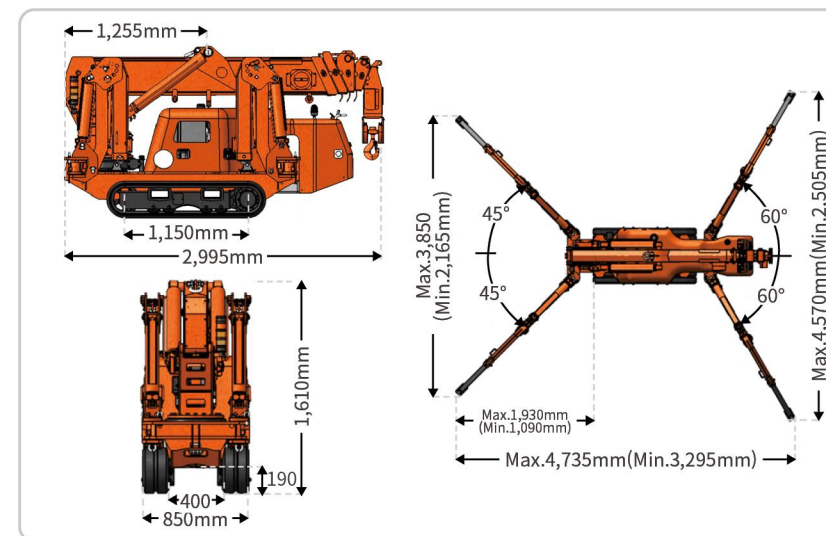
MINI CRAWLER CRANE

Model	Unit	KRXS300
Capacity	m	2.95t×1.3m
Working radius	m	8.79m×0.14t
Ground lifting height	m	9.5m×0.7t
Underground lifting height	m	10m×1t(4 fall), 20m×1t(2 fall), 40m×0.74t(1 fall)
Winch device	Hook speed	m/min 0-8m/min (4 fall)
	Rope type	mm Φ8mm×50m (Minimum breaking force 60.6KN 2160N/mm ²)
Telescopic system	Boom form	- 5 section boom, hexagonal box construction
	Boom length/Time	m/sec 1.99m-6.20m/30sec
Up and downs	Boom angle/Time	°/sec 0-70°/13sec
Slew system	Slew angle/Speed	°/sec 0-360° (continuous) /60sec
Outrigger	Outrigger active form	- Manual+Hydraulic
	Maximum extended dimensions	mm 4,735(Length)×3,850(Front)×4,570(Back)
Traction system	Walking way	- Hydraulic motor drive, 2 speed
	Walking speed	km/h 0-2.5km/h
	Grade ability	° 20°(36%)
	Ground length×width	mm 1,150mm×230 mm
Electric motor	Ground pressure	kpa 42kpa(0.43 kgf/cm ²)
	Voltage	v AC380V(Optional)
	Power/Speed	kw 4kw/1440 min-1
	Sound level	- Rated speed ≤60dB(A) (1m)
Diesel engine	Model	- 2TNV70 (YANMAR)
	Type/Displacement	L 2 cylinder water cooled/0.57L
	Rated output	kw/min 7.5kw/2400 min-1
	Starting method	- Electric
	Operating temperature	°C -5°C~40°C
	Fuel/Volume	L Diesel/12L
	Battery capacity	v/Ah 12v 45AH
Operate system	Specific fuel consumption	g/kw-h 284g/kw-h
	Sound Level	- Rated speed ≤80.5dB(A) (1m)
	Applied regulation	- EPA-Tier2, China phase 3
	Type of operation	- Wireless remote control and manual operation
Dimension	Operating characteristic	- Full proportional control and linkage control
	Length×Width×Height	mm 2,995mm×800mm×1,610mm
Weight	(Without optional equipment)	kg 2,250kg

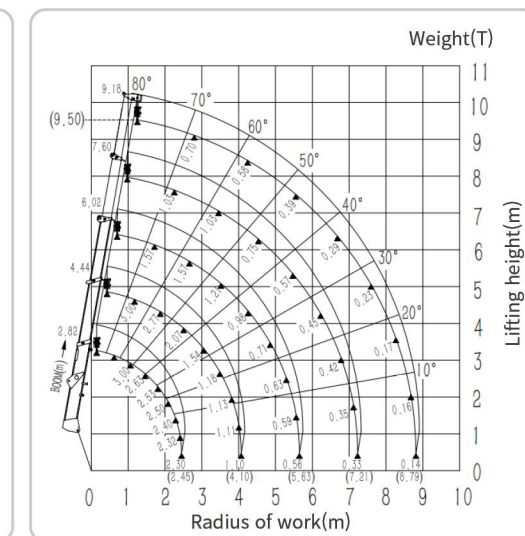
DIMENSIONS&WORKING RANGE

All the KOREX equipment is features have been designed to work in harmony to deliver every function with superior efficiency.

DIMENSIONS



WORKING RANGE



TOTAL RATED LOAD OUTRIGGERS AT MAXIMUM POSITION(4FALL)

2.82/4.44 boom		6.02 boom		7.60 boom		9.18 boom	
Working radius(m)	Total rated load(t)	Working radius(m)	Total rated load(t)	Working radius(m)	Total rated load(t)	Working radius(m)	Total rated load(t)
<1.30	2.95	<2.90	1.57	<3.60	1.03	<4.00	0.7
1.5	2.61	3	1.52	4	0.9	4.5	0.55
2	2.5	3.5	1.15	4.5	0.72	5	0.42
2.5	2.3	4	0.97	5	0.6	5.5	0.38
3	1.84	4.5	0.76	5.5	0.54	6	0.34
3.5	1.3	5	0.67	6	0.46	6.5	0.29
4	1.1	5.63	0.56	6.5	0.4	7	0.25
-	-	-	-	7.21	0.33	7.5	0.23
-	-	-	-	-	-	8	0.19
-	-	-	-	-	-	8.79	0.14

TOTAL RATED LOAD OUTRIGGERS AT ANY OTHER POSITION(4FALL)

2.82/4.44 boom		6.02 boom		7.60 boom		9.18 boom	
Working radius(m)	Total rated load(t)	Working radius(m)	Total rated load(t)	Working radius(m)	Total rated load(t)	Working radius(m)	Total rated load(t)
<1.30	1.80	<2.90	0.63	<3.60	0.50	<4.00	0.40
1.50	1.56	3.00	0.62	4.00	0.40	4.50	0.34
2.00	1.28	3.50	0.50	4.50	0.34	5.00	0.28
2.50	0.80	4.00	0.40	5.00	0.28	5.50	0.22
3.00	0.62	4.50	0.34	5.50	0.22	6.00	0.19
3.50	0.50	5.00	0.28	6.00	0.19	6.50	0.16
4.00	0.40	5.63	0.21	6.50	0.16	7.00	0.12
-	-	-	-	7.21	0.12	7.50	0.10
-	-	-	-	-	-	8.00	0.09
-	-	-	-	-	-	8.79	0.06

KOREX SPIDER CRANE

Spider cranes are widely used in small spaces such as chemical workshop inspection and maintenance, building installation, and railway station construction.

PRODUCT



SPECIFICATION

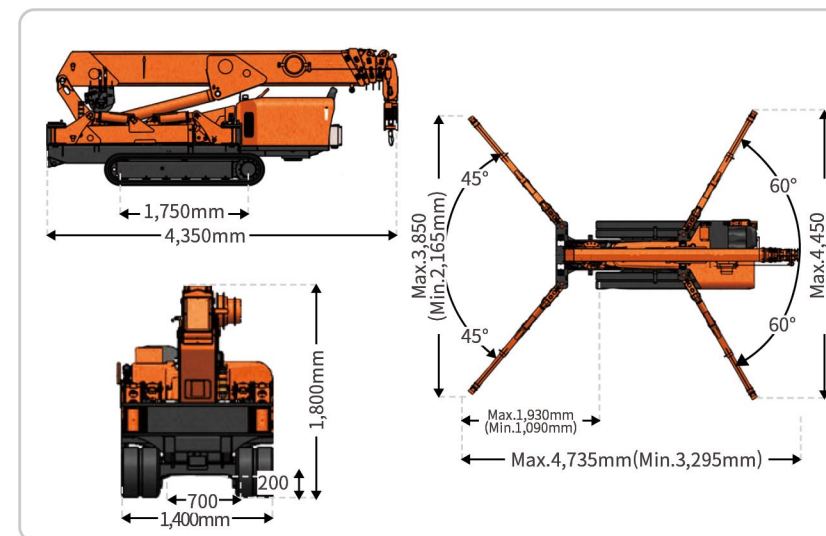
MINI CRAWLER CRANE

Model	Unit	KRXS400
Capacity	m	4t×2m
Working radius	m	13.65m×0.20t
Ground lifting height	m	14.5m×0.85t
Underground lifting height	m	16m×2t(4 fall), 32m×1t(2 fall), 64m×1t(1 fall)
Winch device	Hook speed	m/min 0-12m/min (4 fall)
	Rope type	mm Φ8mm×73m (Minimum breaking force 60.6KN 2160N/mm ²)
Telescopic system	Boom form	- 5 section boom, hexagonal box construction
	Boom length/Time	m/sec 3.54m-12.3m/25sec
Up and downs	Boom angle/Time	°/sec 0-80°/14.5sec
Slew system	Slew angle/Speed	°/sec 0-360° (continuous) /30sec
Outrigger	Outrigger active form	- Manual+Hydraulic
	Maximum extended dimensions	mm 4,580(Length)×4,380(Front)×4,450(Back)
Traction system	Walking way	- Hydraulic motor drive, 2 speed
	Walking speed	km/h 0-3km/h
	Grade ability	° 20°(36%)
	Ground length×width	mm 1,750mm×300 mm
Electric motor	Ground pressure	kpa 42.8kpa (0.437 kgf/cm ²)
	Voltage	v AC380V(Optional)
Diesel engine	Power/Speed	kw 5.5kw/1440 min-1
	Sound level	- Rated speed ≤60dB(A) (1m)
Operate system	Model	- 3TNV80(YANMAR)
	Type/Displacement	L 3 cylinder water cooled/1.266L
	Rated output	kw/min 14.6kw/2,400 min-1
	Starting method	- Electric
	Operating temperature	°C -5°C~40°C
	Fuel/Volume	L Diesel/40L
	Battery capacity	v/Ah 12v 45AH
	Specific fuel consumption	g/kw-h 272g/kw-h
Dimension	Sound Level	- Rated speed ≤83.5dB(A) (1m)
	Applied regulation	- EPA-Tier4, China phase 4
Weight	Type of operation	- Wireless remote control and manual operation
	Operating characteristic	- Full proportional control and linkage control
Dimension	Length×Width×Height	mm 4,350mm×1,400mm×1,800mm
Weight	(Without optional equipment)	kg 4,700kg

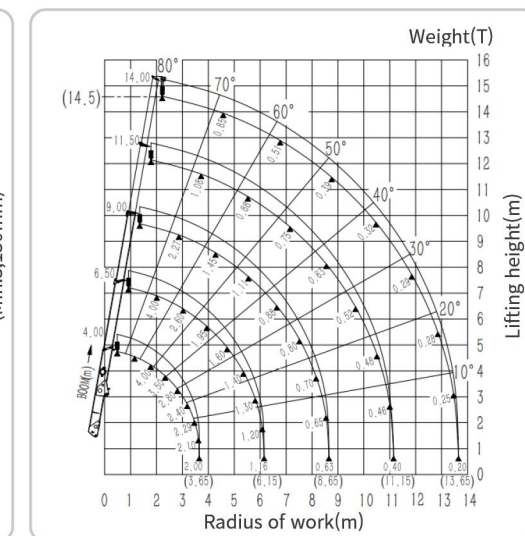
DIMENSIONS&WORKING RANGE

All the KOREX equipment is features have been designed to work in harmony to deliver every function with superior efficiency.

DIMENSIONS



WORKING RANGE



TOTAL RATED LOAD OUTRIGGERS AT MAXIMUM POSITION(4FALL)

4.00/6.50 boom		9.00 boom		11.50 boom		14.00 boom	
Working radius(m)	Total rated load(t)	Working radius(m)	Total rated load(t)	Working radius(m)	Total rated load(t)	Working radius(m)	Total rated load(t)
<2.00	4	<2.70	2.27	<4.00	1.08	<4.50	0.85
2.2	3.5	3	2.12	4.5	0.98	5	0.75
2.5	3.2	3.5	1.98	5	0.92	5.5	0.65
3	2.65	4	1.68	5.5	0.88	6	0.59
3.5	2.1	4.5	1.35	6	0.85	6.5	0.52
4	1.91	5	1.26	6.5	0.82	7	0.48
4.5	1.71	5.5	1.11	7	0.77	8	0.43
5	1.49	6	0.95	7.5	0.72	9	0.37
6	1.25	7	0.85	8	0.65	10	0.32
6.15	1.16	8	0.73	9	0.57	11	0.3
-	-	8.65	0.63	10	0.5	12	0.28
-	-	-	-	11.15	0.4	13	0.25
-	-	-	-	-	-	13.65	0.2

KOREX SPIDER CRANE

Spider cranes are widely used in small spaces such as chemical workshop inspection and maintenance, building installation, and railway station construction.

PRODUCT



SPECIFICATION

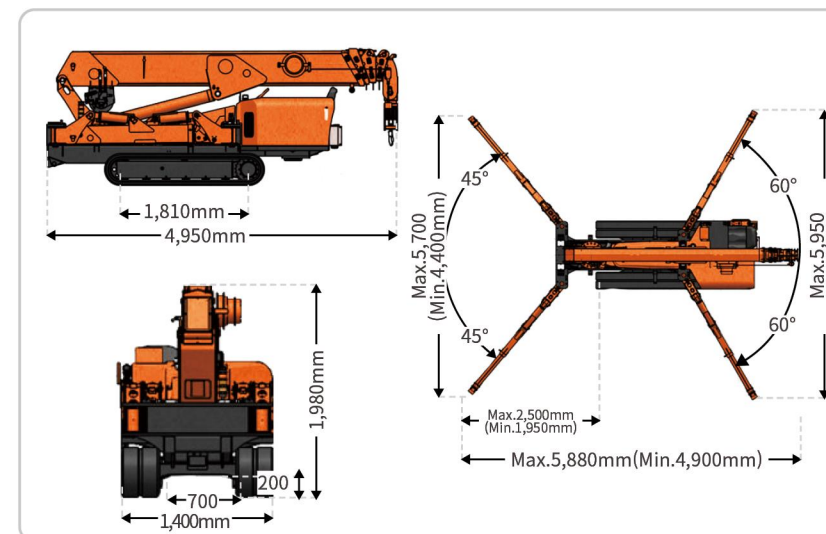
MINI CRAWLER CRANE

Model	Unit	KRXS500
Capacity	m	5.0t×2.2m
Working radius	m	16.14m×0.21t
Ground lifting height	m	17.2M×1.15t
Underground lifting height	m	17.5m×2.5t(4 fall), 35m×2t(2 fall), 70m×1t(1 fall)
Winch device	Hook speed	m/min 0-14m/min (4 fall)
	Rope type	mm ϕ10mm×80m (Minimum breaking force 90.1KN 1960N/mm ²)
Telescopic system	Boom form	- 5 section boom, hexagonal box construction
	Boom length/Time	m/sec 4.64m-16.64m/45sec
Up and downs	Boom angle/Time	°/sec 0-80°/18sec
Slew system	Slew angle/Speed	°/sec 0-360° (continuous) /30sec
Outrigger	Outrigger active form	- Manual+Hydraulic
	Maximum extended dimensions	mm 5,880(Length)×5,700(Front)×5,950(Back)
Traction system	Walking way	- Hydraulic motor drive, 2 speed
	Walking speed	km/h 0-3km/h
	Grade ability	° 20°(36%)
	Ground length×width	mm 1,810mm×350 mm
Electric motor	Ground pressure	kpa 44kpa (0.45 kgf / cm ²)
	Voltage	v AC380V(Optional)
	Power/Speed	kw 7.5kw/1440 min-1
	Sound level	- Rated speed ≤60dB(A) (1m)
Diesel engine	Model	- 3TNV80F (YANMAR)
	Type/Displacement	L 3 cylinder water cooled/1.266L
	Rated output	kw/min 14.6kw/2400 min-1
	Starting method	- Electric
	Operating temperature	°C -5°C~40°C
	Fuel/Volume	L Diesel/40L
	Battery capacity	v/Ah 12v 45AH
Operate system	Specific fuel consumption	g/kw-h 272g/kw-h
	Sound Level	- Rated speed ≤83.5dB(A) (1m)
	Applied regulation	- EPA-Tier4, China phase 4
	Type of operation	- Wireless remote control and manual operation
Dimension	Operating characteristic	- Full proportional control and linkage control
	Length×Width×Height	mm 4,950mm×1,400mm×1,980mm
Weight	(Without optional equipment)	kg 5,750kg

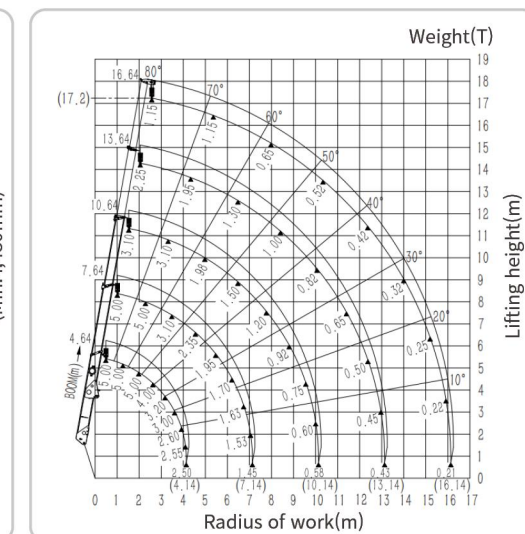
DIMENSIONS&WORKING RANGE

All the KOREX equipment is features have been designed to work in harmony to deliver every function with superior efficiency.

DIMENSIONS



WORKING RANGE



TOTAL RATED LOAD OUTRIGGERS AT MAXIMUM POSITION(4FALL)

4.64/7.64 boom		10.64 boom		13.64 boom		16.64 boom	
Working radius(m)	Total rated load(t)	Working radius(m)	Total rated load(t)	Working radius(m)	Total rated load(t)	Working radius(m)	Total rated load(t)
<2.20	5.00	<3.50	3.10	<4.00	2.25	<5.00	1.15
2.50	4.20	4.00	2.58	4.50	1.93	5.50	0.98
3.00	3.55	4.50	2.25	5.00	1.73	6.00	0.91
3.50	3.10	5.00	1.98	6.00	1.40	7.00	0.76
4.00	2.60	6.00	1.68	7.00	1.18	8.00	0.65
5.00	2.20	7.00	1.38	8.00	1.03	9.00	0.60
6.00	1.72	8.00	1.13	9.00	0.93	10.00	0.55
7.00	1.55	9.00	0.88	10.00	0.83	11.00	0.49
7.14	1.45	10.14	0.58	11.00	0.69	12.00	0.44
-	-	-	-	12.00	0.53	13.00	0.38
-	-	-	-	13.14	0.43	14.00	0.32
-	-	-	-	-	-	15.00	0.26
-	-	-	-	-	-	16.14	0.21

TOTAL RATED LOAD OUTRIGGERS AT ANY OTHER POSITION(4FALL)

4.64/7.64 boom		10.64 boom		13.64 boom		16.64 boom	
Working radius(m)	Total rated load(t)	Working radius(m)	Total rated load(t)	Working radius(m)	Total rated load(t)	Working radius(m)	Total rated load(t)
<1.30	1.80	<2.90	0.63	<3.60	0.50	<4.00	0.40
1.50	1.56	3.00	0.62	4.00	0.40	4.50	0.34
2.00	1.28	3.50	0.50	4.50	0.34	5.00	0.28
2.50	0.80	4.00	0.40	5.00	0.28	5.50	0.22
3.00	0.62	4.50	0.34	5.50	0.22	6.00	0.19
3.50	0.50	5.00	0.28	6.00	0.19	6.50	0.16
4.00	0.40	5.63	0.21	6.50	0.16	7.00	0.12
-	-	-	-	7.21	0.12	7.50	0.10
-	-	-	-	-	-	8.00	0.09
-	-	-	-	-	-	8.79	0.06

KOREX SPIDER CRANE

Spider cranes are widely used in small spaces such as chemical workshop inspection and maintenance, building installation, and railway station construction.

PRODUCT



SPECIFICATION

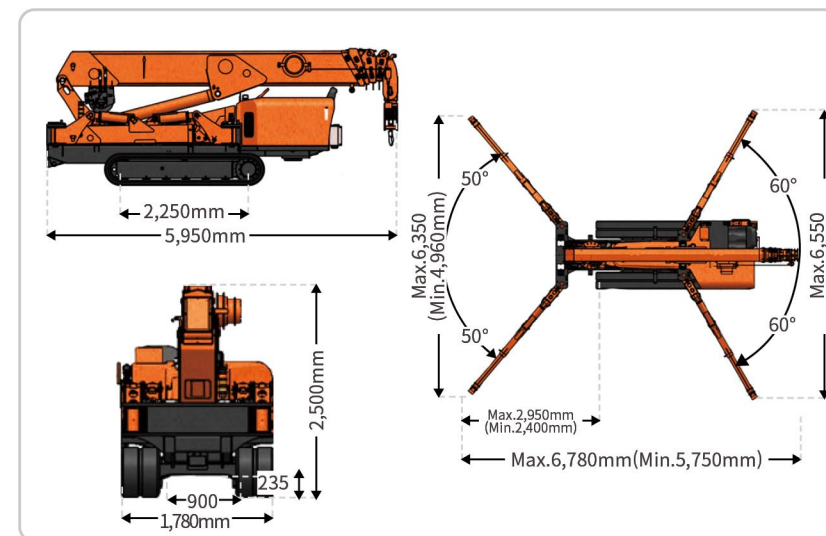
MINI CRAWLER CRANE

Model	Unit	KRXS900
Capacity	m	8.5t×2.4m
Working radius	m	19m×0.35t
Ground lifting height	m	20.2m×2.50t
Underground lifting height	m	18m×3.8t (6 fall), 25m×3.8t (4 fall), 54m×3.8t (2 fall), 110m×1.5t (1 fall)
Winch device	Hook speed	m/min 0-12m/min (6 fall) 0-18m/min (4 fall)
	Rope type	Φ10mm×120m (Minimum breaking force 94.7KN 2160N/mm ²)
Telescopic system	Boom form	5 section boom, hexagonal box construction
	Boom length/Time	m/sec 5.6m-19.6m/55sec
Up and downs	Boom angle/Time	°/sec 0-80°/25sec
Slew system	Slew angle/Speed	°/sec 0-360° (continuous) /30sec
Outrigger	Outrigger active form	- Manual+Hydraulic
	Maximum extended dimensions	mm 6,780(Length)×6,350(Front)×6,550(Back)
Traction system	Walking way	- Hydraulic motor drive, 2 speed
	Walking speed	km/h 0-3.2km/h
	Grade ability	° 23°(42%)
	Ground length×width	mm 2,250mm×400 mm
Electric motor	Ground pressure	kpa 58kpa (0.59 kgf/cm ²)
	Voltage	v AC380V(Optional)
	Power/Speed	kw 15kw/1440 min-1
Diesel engine	Sound level	- Rated speed ≤60dB(A) (1m)
	Model	- 4TNV88 (YANMAR)
	Type/Displacement	L 4 cylinder water cooled/2.190L
	Rated output	kw/min 29.1kw/2,400 min-1
	Starting method	- Electric
	Operating temperature	°C -5°C~40°C
	Fuel/Volume	L Diesel/40L
	Battery capacity	v/Ah 12v 60AH
	Specific fuel consumption	g/kw-h 239g/kw-h
	Sound Level	- Rated speed ≤85dB(A) (1m)
Operate system	Applied regulation	- EC stage 3B&EPA/ARB-OR Tier4, China phase 4
	Type of operation	- Wireless remote control and manual operation
Dimension	Operating characteristic	- Full proportional control and linkage control
	Length×Width×Height	mm 5,950mm×1,780mm×2,500mm
Weight	(Without optional equipment)	kg 10,500kg

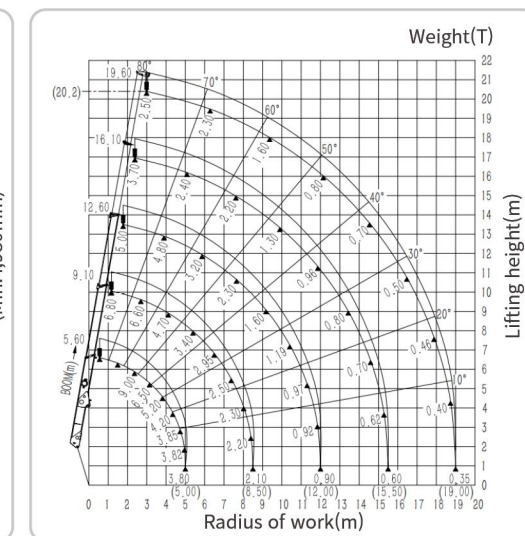
DIMENSIONS&WORKING RANGE

All the KOREX equipment is features have been designed to work in harmony to deliver every function with superior efficiency.

DIMENSIONS



WORKING RANGE



TOTAL RATED LOAD OUTRIGGERS AT MAXIMUM (ANY OTHER) POSITION(6FALL)

Working radius(m)	Total rated load(t)									
	5.60 boom		9.10 boom		12.60 boom		16.10 boom		19.60 boom	
	Other	Max	Other	Max	Other	Max	Other	Max	Other	Max
2.40	8.50	8.50	6.80	6.80	5.00	5.00	3.70	3.70	-	-
2.50	8.15	8.15	6.70	6.70	4.90	4.90	3.65	3.65	-	-
3.00	7.20	7.20	6.50	6.50	4.80	4.80	3.60	3.60	2.50	2.50
3.50	6.00	6.00	5.50	5.50	4.70	4.70	3.50	3.50	2.50	2.50
4.00	5.00	5.00	4.80	4.80	4.70	4.70	3.45	3.45	2.45	2.45
4.50	4.00	4.20	4.00	4.20	4.00	4.10	3.20	3.40	2.40	2.45
5.00	3.10	3.80	3.10	3.80	3.10	3.70	3.10	3.40	2.35	2.40
6.00	-	-	2.20	3.20	2.20	3.10	2.20	2.80	2.20	2.40
7.00	-	-	1.50	2.70	1.50	2.60	1.50	2.40	1.50	2.00
8.00	-	-	1.20	2.30	1.20	2.10	1.20	2.10	1.20	1.70
8.50	-	-	1.10	2.10	1.10	1.90	1.10	1.90	1.10	1.60
9.00	-	-	-	-	1.00	1.70	1.00	1.70	1.00	1.50
10.00	-	-	-	-	0.70	1.30	0.70	1.30	0.70	1.30
11.00	-	-	-	-	0.55	1.05	0.55	1.05	0.55	1.05
12.00	-	-	-	-	0.50	0.90	0.50	0.90	0.50	0.90
13.00	-	-	-	-	-	-	0.45	0.85	0.45	0.85
14.00	-	-	-	-	-	-	0.40	0.75	0.40	0.75
15.00	-	-	-	-	-	-	0.35	0.65	0.35	0.65
15.50	-	-	-	-	-	-	0.32	0.60	0.32	0.60
16.00	-	-	-	-	-	-	-	-	0.30	0.58
17.00	-	-	-	-	-	-	-	-	0.25	0.50
18.00	-	-	-	-	-	-	-	-	0.20	0.45
19.00	-	-	-	-	-	-	-	-	0.15	0.35