

KOREX SKID STEER LOADER

MODEL KSL70 | 75 | 80 | 90 | 95 | 100 | 105 | 120 | 121 | 140 | 160 | 100T



OFFICE

Office. 603 6th floor 298, Beotkkot-ro, Geumcheon-gu, Seoul, Republic of Korea
Factory. 246 Gogol-gil, Deogyang-gu, Goyang-si, Gyeonggi-do, Republic of Korea
Tel. (+82)2038-0008
Email. sales@kscparts.com

KOREX SKID STEER LOADER PERFORMANCE ADVANTAGES

It can change different attachments at job site, change just needs a few of minutes, to adapt to different working environment and job contents. In this way, shoveling, stacking, lifting, digging, grasping, pushing, loosening soil, trenching, road cleaning can be respectively carried out.



• EASY-TO-REPLACEABLE ATTACHMENT

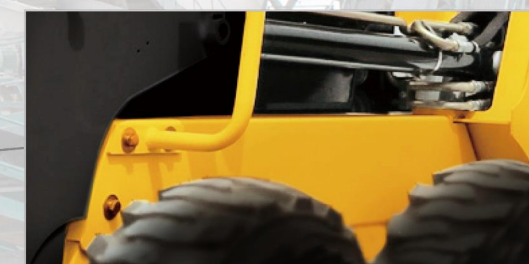
It is easy and convenient to use with various applicable attachments.



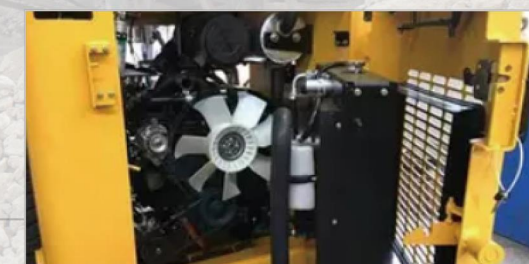
POWERFUL SKID STEER LOADER KD SERIES



• **EFFICIENT HIGH FLOW HYDRAULICS**
Strong driving force & Perfect hydraulic system & Durable structure parts.



• **OPEN OR CLOSED CABIN WITH ROPS&FORS**
Heavy-duty design ensures high firmness and reliability.

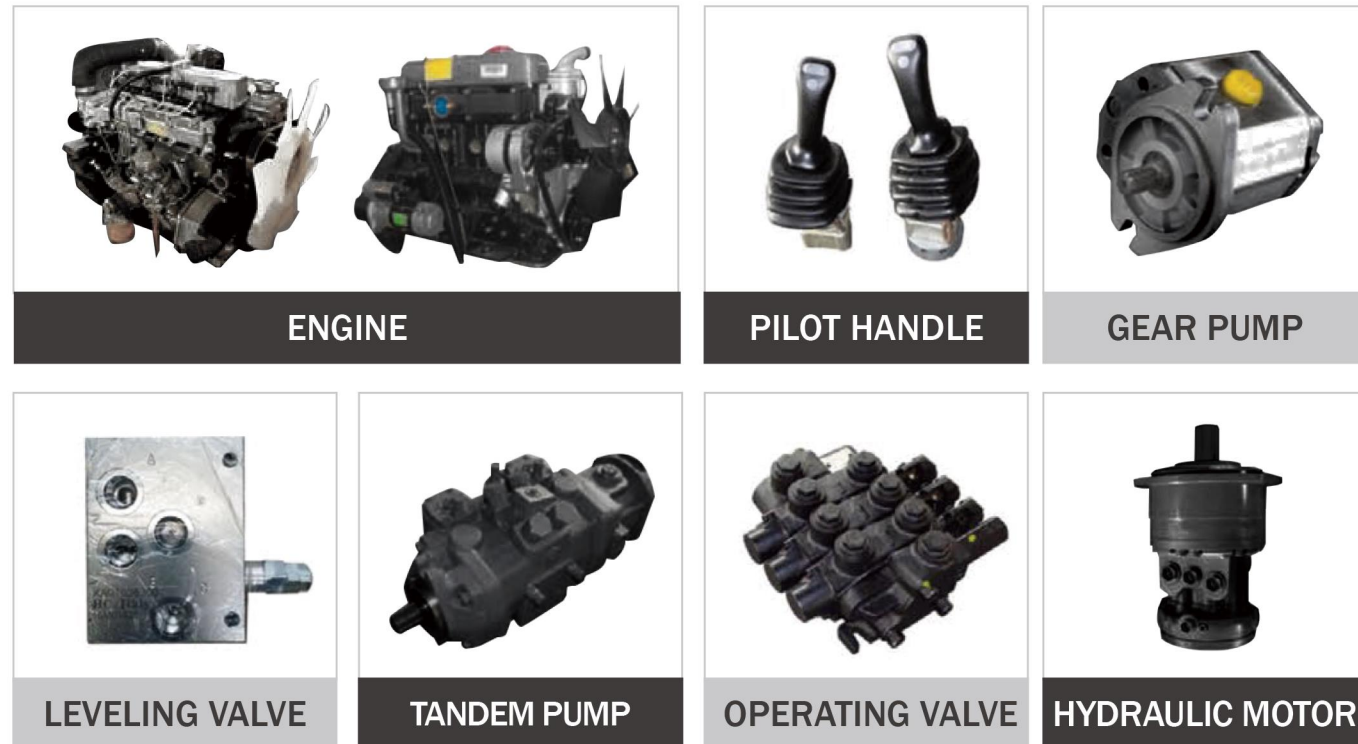


• **EASY AND CONVENIENT MAINTENANCE**
Maintenance is more convenient. As long as open the back cover and the upper cover and lift the cab, you can complete all inspection and filling work, including the engine.



CORE COMPONENTS

- Heavy-duty design ensures high firmness and reliability
- Strong driving force&Perfect hydraulic system&Durable structure parts



DIMENSIONS

Model	Unit	KSL70	KSL80	KSL100	KSL120	
Overall operating height	A	mm	3,850	3,850	4,000	4,000
Height to bucket hinge pin	B	mm	3,000	3,000	3,100	3,100
Height to cab top	C	mm	1,980	1,980	2,028	2,028
height to bottom of level bucket	D	mm	2,800	2,800	2,960	2,960
Overall length without bucket	E	mm	2,708	2,708	2,733	2,733
Overall length with bucket	F	mm	3,406	3,406	3,523	3,523
Dumping angle at maximum height	G	°	40	40	40	40
Dumping height	H	mm	2,336	2,336	2,465	2,465
Dumping reach	I	mm	505	505	610	610
Rollback of bucket on ground	J	°	30	30	30	30
Rollback of bucket at full height	K	°	96	96	98	98
Wheelbase	L	mm	1,085	1,085	1,150	1,150
Ground clearance	M	mm	186	186	215	215
Angle of departure	N	°	26	26	26	26
Turning radius front without bucket	O	mm	1,270	1,270	1,350	1,350
Front turning radius with bucket	P	mm	2,032	2,032	2,210	2,210
Rear turning radius	Q	mm	1,650	1,650	1,786	1,786
Tread width, centerline to centerline	R	mm	1,375	1,375	1,506	1,506
Width between outside of two wheels	S	mm	1,625	1,625	1,850	1,850
Bucket width	T	mm	1,740	1,740	1,880	1,880

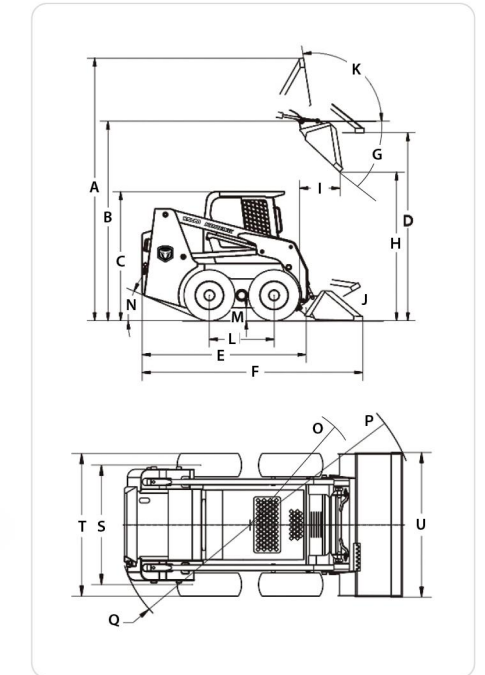
PRODUCT SPECIFICATIONS

- The proven linkage structure is very efficient which has big breakout force, quick movement and high lifting capacity features.

PRODUCT



EXTERIOR DRAWING



SPECIFICATION

KSL70/80/100/120





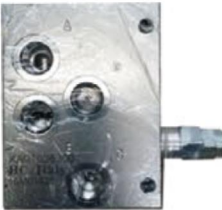



Model	Unit	KSL70	KSL80	KSL100	KSL120
Rated loading capacity	kgs	700	800	1,000	1,200
Engine power	kw	37	45	55	69
Bucket capacity	m ³	0.45	0.47	0.5	0.5
Hydraulic pump output flow	L/min	80	80	128	80
Operating weight	kgs	3,100	3,150	3,500	3,600
Chain type	-	100H	100H	100H	100H
Speed-standard	km/h	12.2	12.2	11.6	11.6
Speed-high	km/h	Optional	Optional	Optional	Optional
Tubeless tires	-	10-16.5	10-16.5	12-16.5	12-16.5
Tipping. Loading	kgs	1,400	1,600	2,000	2,400
Lifting type	-	Radial	Radial	Radial	Radial
Breakout force	kgs	1,810	1,830	2,560	2,760
Breakout for lift	kgs	2,200	2,340	2,560	2,760
Total cycle time	s	9.1	9.4	10.2	10.2
System pressure	bar	210	210	210	210
High flow pump output	-	for optional	for optional	128	128
Fuel tank	L	90	90	90	90
Kerb weight with bucket	kgs	2,780	2,810	3,450	3,350

* Structure and specification are subject to change without notice.

* In case there is any difference between the description of the machine and the substantial machine, the substantial machine should govern.

CORE COMPONENTS

- Heavy-duty design ensures high firmness and reliability
- Strong driving force&Perfect hydraulic system&Durable structure parts

			
MITSUBISHI ENGINE	XINCHAI/WEICHAH ENGINE	HYDE PILOT HANDLE	US.PERMCO GEAR PUMP
			
HC LEVELING VALVE	GERMANY TANDEM PUMP	ITALY HYDE OPERATING VALVE	FRABCE. POCLAN HYDRAULIC MOTOR

DIMENSIONS

Model	Unit	KSL75	KSL90	KSL95	KSL105	KSL120	
Loader pump flow(Hydraulic System)	Hydraulic System	L/min	65	82	82	85	
						75	
Loader pressure		bar	180	200	200	200	
Overall operating height	A	mm	4,058	4,270	4,270	4,295	4,383
Bucket hinge pin height	B	mm	3,077	3,265	3,269	3,290	3,321
Height to cab top	C	mm	2,007	2,007	2,007	2,023	2,031
Max. level height of shovel bucket bottom	D	mm	2,908	3,090	3,090	3,116	3,167
Length W/O bucket	E	mm	2,700	2,710	2,710	2,889	2,957
Length with bucket	F	mm	3,413	3,433	3,498	3,688	3,821
Max. dump height	H	mm	2,303	2,551	2,551	2,543	2,547
Dump distance	J	mm	675	603	603	652	720
Wheel base	M	mm	999	1,020	1,050	1,179	1,258
Departure angle	Q	°	23	22	22	24	24
Ground clearance	P	mm	185	185	185	202	195
Width-tires edge	W	mm	1,740	1,740	1,740	1,817	1,918
Width-bucket edge	X	mm	1,780	1,800	1,800	1,880	1,970
Bucket capacity	-	m ³	0.35	0.41	0.52	0.52	0.56
Fuel tank capacity	-	L	88	88	88	88	108
Hydraulic tank capacity	-	L	70	70	70	70	85

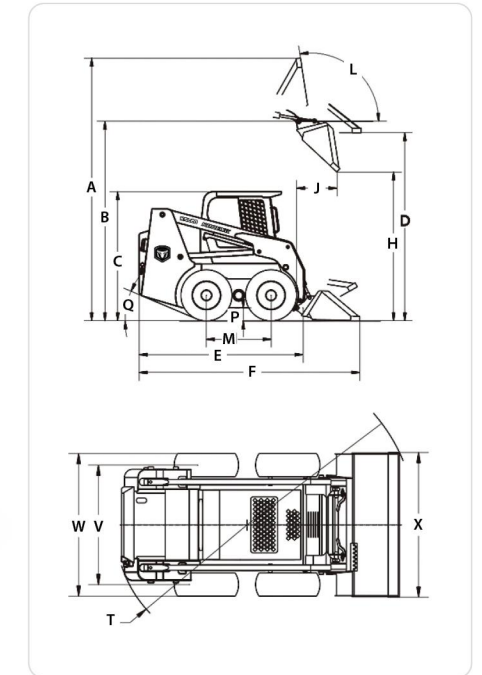
PRODUCT SPECIFICATIONS

- The proven linkage structure is very efficient which has big breakout force, quick movement and high lifting capacity features.

PRODUCT



EXTERIOR DRAWING



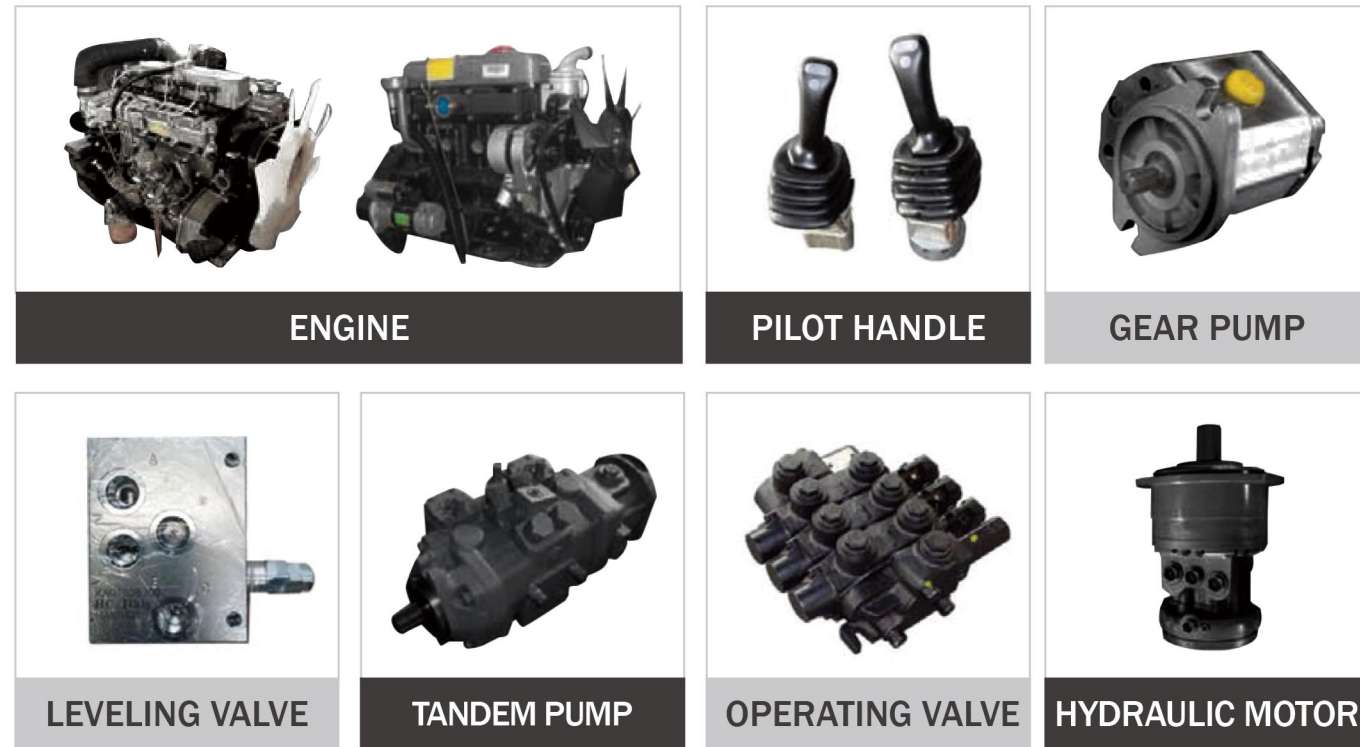
SPECIFICATION

KSL75/90/95/105/121

Model	Unit	KSL75	KSL90	KSL95	KSL105	KSL121	
Rated load	kg	750	900	950	1,050	1,210	
Tipping load	kg	1,500	1,800	1,900	2,020	2,420	
					2,100		
Operating weight	kg	3,003	3,420	3,300	3,550	4,300	
					3,770		
Engine	Brand	-	Xinchai	Xinchai	Xinchai	Mitsubisht	Weichai
		-	Yanmar	Yanmar	Yanmar		
	Model	-	490BPG	A498BPG	A498BZG	S4S-DT-62kw	WP4.1
		-	4TNV94L	4TNE98	4TNV98T		
	Output power	Hp/kw	36.8	45	55	83.1/62	74
			35.5	43	55		
	Rated speed	rpm	2,650	2,500	2,500	2,500	2,500
				2,600			
Cooling	-	Water	Water	Water	Water	Water	
Performance parameter	Operating Model	-	Mechanic	Hydraulic control	Hydraulic control		
	Tire standard	-	10.0~16.5	10.0~16.5	10.0~16.5	12.0~16.5	12.0~16.5
		-	12	12	12	12.4	9.18
Max.speed	Km/h	12	12	12	12.4	9.18	

CORE COMPONENTS

- Heavy-duty design ensures high firmness and reliability
- Strong driving force&Perfect hydraulic system&Durable structure parts



DIMENSIONS

Model	Unit	KSL140	KSL160
Overall operating height	A mm	4,224	4,224
Height to bucket hinge pin	B mm	3,373	3,373
Height to top of cab	C mm	2,065	2,065
height to bottom of level bucket	D mm	3,177	3,177
Overall length without bucket	E mm	2,926	2,926
Overall length with bucket	F mm	3,624	3,624
Dumping angle at maximum height	G °	42	42
Dumping height	H mm	2,672	2,672
Dumping reach	I mm	730	730
Rollback of bucket on ground	J °	30	30
Rollback of bucket at full height	K °	98	98
Wheelbase	L mm	1,227	1,227
Ground clearance	M mm	215	215
Angle of departure	N °	25	25
Turning radius front without bucket	O mm	1,350	1,350
Front turning radius with bucket	P mm	2,143	2,143
Rear turning radius	Q mm	1,759	1,759
Tread width, centerline to centerline	R mm	1,507	1,507
Width between outside of two wheels	S mm	1,850	1,850
Bucket width	T mm	1,880	1,880

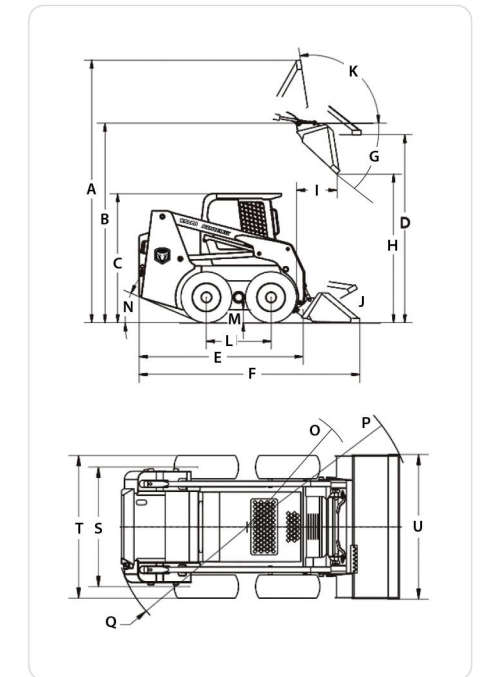
PRODUCT SPECIFICATIONS

- The proven linkage structure is very efficient which has big breakout force, quick movement and high lifting capacity features.

PRODUCT



EXTERIOR DRAWING



SPECIFICATION

KSL140/160

Model	Unit	KSL140	KSL160
Rated loading capacity	kgs	1,400	1,600
Engine power	kw	69	69
Bucket capacity	m ³	0.55	0.6
Hydraulic pump output flow	L/min	80	80
High flow output	L/min	158	158
Operating weight	kgs	3,800	4,050
Chain type	-	100H	100H
Speed-standard	km/h	12	12
Speed-high	km/h	Standard	Standard
Tubeless tires	-	12-16.5	12-16.5
Tipping. Loading	kgs	2800	3200
Lifting type	-	Vertical	Vertical
Breakout force	kgs	3,100	3,300
Breakout for lift	kgs	2,800	2,900
Total cycle time	s	10.3	10.3
System pressure	bar	210	210
High flow pump output	-	137.5	137.5
Fuel tank	L	100	100
Kerb weight with bucket	kgs	3,600	3,800

* Structure and specification are subject to change without notice.

* In case there is any difference between the description of the machine and the substantial machine, the substantial machine should govern.

CORE COMPONENTS

- Heavy-duty design ensures high firmness and reliability
- Strong driving force&Perfect hydraulic system&Durable structure parts



DIMENSIONS

Model	Unit	KSL100T
Overall operating height	A mm	4,000
Height to bucket hinge pin	B mm	3,100
Height to top of cab	C mm	2,028
height to bottom of level bucket	D mm	2,960
Overall length without bucket	E mm	2,733
Overall length with bucket	F mm	3,523
Dumping angle at maximum height	G °	40
Dumping height	H mm	2,465
Dumping reach	I mm	610
Rollback of bucket on ground	J °	30
Rollback of bucket at full height	K °	98
Wheelbase	L mm	1,150
Ground clearance	M mm	215
Angle of departure	N °	26
Turning radius front without bucket	O mm	1,350
Front turning radius with bucket	P mm	2,210
Rear turning radius	Q mm	1,786
Tread width, centerline to centerline	R mm	1,506
Width between outside of two wheels	S mm	1,850
Bucket width	T mm	1,880

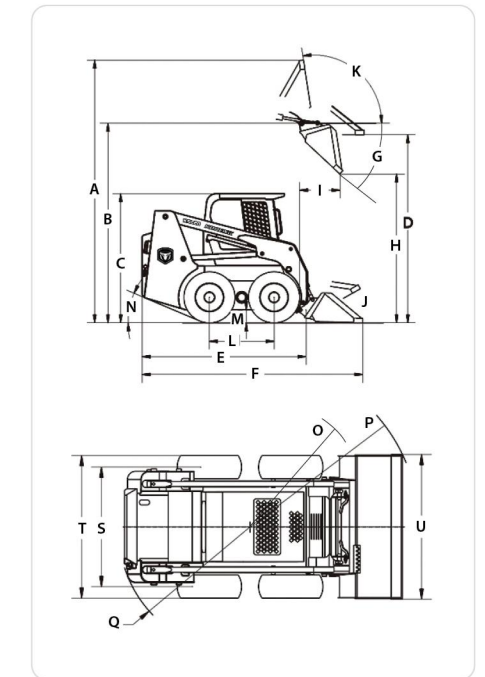
PRODUCT SPECIFICATIONS

- The proven linkage structure is very efficient which has big breakout force, quick movement and high lifting capacity features.

PRODUCT



EXTERIOR DRAWING



SPECIFICATION

KSL100T

Model	Unit	KSL100T
Rated loading capacity	kgs	1,000
Engine power	kw	69
Bucket capacity	m ³	0.5
Hydraulic pump output flow	L/min	80
High flow output	L/min	128
Operating weight	kgs	3,900
Chain type	-	100H
Speed-standard	km/h	11.6
Speed-high	km/h	20
Tubeless tires	-	Rubbr tracked
Tipping. Loading	kgs	2,000
Lifting type	-	Radial
Breakout force	kgs	2,560
Breakout for lift	kgs	2,560
Total cycle time	s	10.2
System pressure	bar	210
High flow pump output	-	128
Fuel tank	L	90
Kerb weight with bucket	kgs	3,600

* Structure and specification are subject to change without notice.

* In case there is any difference between the description of the machine and the substantial machine, the substantial machine should govern.

