

# KOREX ROAD ROLLER

MODEL KRL100 | KRL160 | KRL180 | KRL200 | KRL220 | KRL260



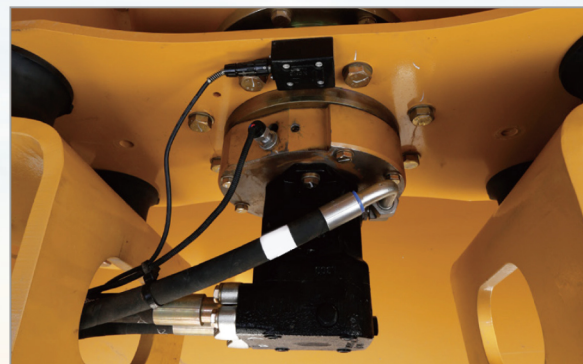
## OFFICE

**Office.** 603 6th floor 298, Beotkot-ro, Geumcheon-gu, Seoul, Republic of Korea  
**Factory.** 246 Gogol-gil, Deogyang-gu, Goyang-si, Gyeonggi-do, Republic of Korea  
**Tel.** (+82)2038-0008  
**Email.** sales@kscparts.com

# KOREX ROAD ROLLER PERFORMANCE ADVANTAGES

KOREX's road rollers have high compression efficiency, good compression quality, can effectively compress various soil layers and rock reclamation, and can be applied to the construction of modern highways, airports, embankments, ports, dams, railways, mines, etc.

# HIGH EFFICIENT ROAD ROLLER KD SERIES



## VIBRATION COMPRESSION SYSTEM

The bearing adopts short cylindrical bearing, featuring high rotary speed limit and strong bearing capacity.



EQUIPPED WITH DURABLE COMPRESSION ROLLERS FOR EFFICIENT OPERATION



## EASY CONTROL SYSTEM

Electrical control start, ease of operation, vibration type selection, excellent compression performance.



## CONVENIENT MAINTENANCE

The engine cover is easy to open, and the opening angle is large, which make the maintenance part accessible.



EXTENDS LIFE OF HYDRAULIC SYSTEM



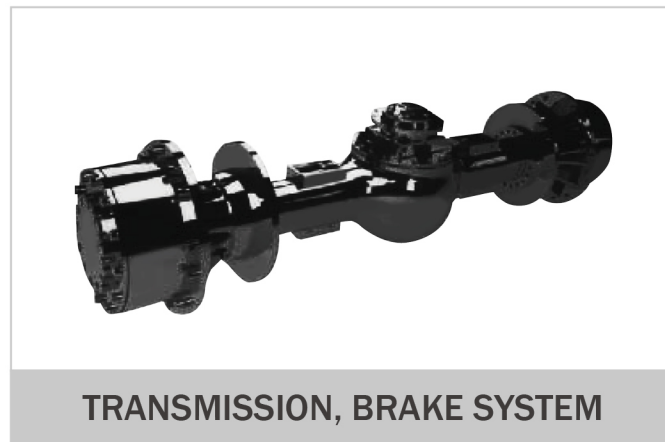
# CORE COMPONENTS

- Heavy-duty design ensures high firmness and reliability
- Maintenance-free high reliability brake system



**WORLD-CLASS ENGINE**

4-cylinder, super-pressurized, world famous WEICHAH engine with power reserve, high efficiency, ultra-low fuel consumption, energy saving and environmental protection.



**TRANSMISSION, BRAKE SYSTEM**

With two sets of brake system, the service brake is a gas-top oil tongs disc type, the parking brake is an internal rising drum type, and the safety performance is good. Equipped with drive axle with differential.



**VIBRATION SYSTEM**

Famous brand gear pump and gear motor with high efficiency and reliable quality. Electronic control vibration, easy to operate, with high and low amplitude vibration selection, excellent compaction performance.



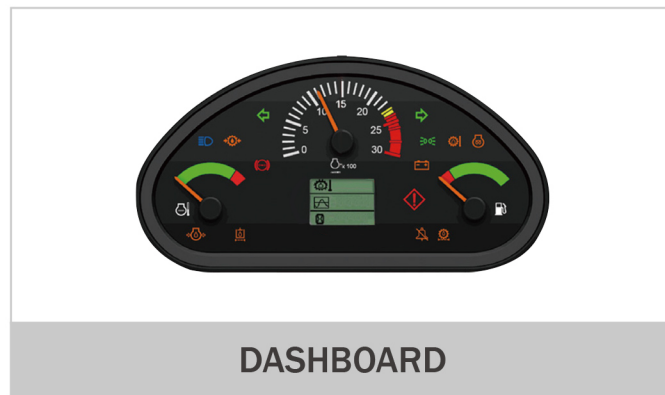
**VIBE POD DESIGN**

Eccentric vibs pod design, extends system life by 50%. Steel shot moving inside closed eccentric block, stable and reliable vibs amplitude, reduces impact to motor, prolongs maintenance period of vibratory system.



**COMFORTABLE CABIN**

Machine modeling, sealed soundproof cabin. There are shock measures with comfort driving. European streamlined design for rear cover, which can be opened for a big angel, with convenient daily maintenance.



**DASHBOARD**

Operator may select appropriate frequency to avoid excessive compaction. Machine will diagnose system issues and notify the operator with 3 levels of warning indicator lights and audio alarms.

# SINGLE DRUM VIBRATORY ROLLER

- It can effectively compact various soil layers and rock fill, and can be applied to the constructions of modern freeways, airports, embankment fill, ports.



**KOREX KRL100/160/180/200/220/260**

## SPECIFICATION

Model	Unit	KRL100	KRL160	KRL180	KRL200	KRL220	KRL260
Operating weight	kg	10,000	16,000	18,000	20,000	22,000	26,000
Drum width	mm	2,100	-	-	-	-	-
Front drum weight	kg	-	8,250	9,450	10,000	11,000	-
Rear axle load	kg	-	7,750	8,550	10,000	11,000	-
Static line pressure	N/cm	240	380	435	460	516	587
Vibratory frequency	Hz	30	30	30	30	30	28/32
Centrifugal force	Kn	225/105	325/165	365/190	405/220	420/230	405/265
Travel speed	km/h	-	-	-	-	-	-
Forward	I	km/h	2.0	2.5	2.5	2.5	2.91
	II	km/h	4.2	5.0	5.0	5.0	5.74
	III	km/h	8.7	10.5	10.5	10.5	9.37
Backward (Reverse)	I	-	2.0	2.5	2.5	2.5	-
	II	-	4.2	5.0	5.0	5.0	-
Gradeability	%	-	30	30	30	30	34
Min. turning radius	mm	-	6,400	6,400	6,400	6,400	6,800
Min. ground clearance	mm	-	450	450	450	450	476
Tire model	-	-	20.5-25-16PR	20.5-25-16PR	20.5-25-16PR	20.5-25-16PR	23.5-25
Drive type	-	-	Mechanical drive				-
Diesel engine	-	WP4G110E221	WP6G160E201	WP6G160E201	WP6G175E201	WP6G175E201	WP6G
Rated power	kW	82	118	118	129	129	140
Rated speed	r/min	2,000	2,000	2,000	2,000	2,000	1,800
Dimensions	L	mm	5,570	6,240	6,240	6,240	6,650
	W	mm	2,250	2,280	2,280	2,300	2,470
	H	mm	3,080	3,080	3,080	3,080	3,250

# TANDEM DRUM ROLLER

· It can effectively compact various soil layers and rock fill, and can be applied to the constructions of modern freeways, airports, embankment fill, ports.



## SPECIFICATION

### TDR03/31/06/10/11/80

Model	Unit	TDR03	TDR31	TDR06	TDR10	TDR11	TDR80
Length	mm	2,990	2,600	3,660	4,880	4,350	2,400
Width	mm	1,280	1,320	1,550	1,980	1,900	880
Height	mm	2,360	2,580	2,630	2,800	3,050	1,100
Operating weight	kg	3,000	3,000	6,000	10,000	10,000	770
Drum width	mm	800	1,200	1,320	1,700	1,700	600
Static linear pressure	N/cm	162	140	260	259/317	230	62
Vibration frequency	Hz	50	62	46	42	40/46	48
Centrifugal force	KN	35	32	60	100/85	110/65	12
Forward	-	2/5.6	0~12	2.5/7.5	2.4/4.8/8.4	0~5.5/0~11	0~4
Reverse	-	2/5.6	0~12	2.5/7.5	2.4/4.8/8.4	0~5.5/0~11	0~4
Diesel brand		CHANGCHAI	CHANGCHAI	CHANGCHAI	Cummins	Cummins	CHANGCHAI
Diesel model	-	ZN390Q	ZN390B	4L68	4BT3.9-C100	4BT3.9-C110	CF186F
Rated output	KW	25	28.5	40	75	82	5.7

\* Structure and specification are subject to change without notice.

\* In case there is any difference between the description of the machine and the substantial machine, the substantial machine should govern.

# PNEUMATIC TIRE ROLLER

· It can effectively compact various soil layers and rock fill, and can be applied to the constructions of modern freeways, airports, embankment fill, ports.



## SPECIFICATION

### PTR16/26/30

Model	Unit	PTR16	PTR26	PTR30
Length	mm	4,770	5,230	5,230
Width	mm	2,290	2,890	2,890
Height	mm	3,162	3,210	3,210
Operating weight	kg	10,000~16,000	16,000~26,000	25,000~30,000
Rolling width	mm	2,290	2,890	2,890
Tire number	-	4+5	5+6	5+6
Tire contact pressure	kPa	150~300	250~420	307~460
Diesel engine	-	Cummins 4BTA3.9	Cummins QSB5.9	SHANGCHAI SC8DK180
Rated output	KW	93	119	132

\* Structure and specification are subject to change without notice.

\* In case there is any difference between the description of the machine and the substantial machine, the substantial machine should govern.