

# KOREX BULLDOZER

MODEL KRL130 | 160 | 170 | 180 | 190 | 220 | 240 | 250 | 260 | 270 | 320 | 440



## OFFICE

**Office.** 603 6th floor 298, Beotkkot-ro, Geumcheon-gu, Seoul, Republic of Korea  
**Factory.** 246 Gogol-gil, Deogyang-gu, Goyang-si, Gyeonggi-do, Republic of Korea  
**Tel.** (+82)2038-0008  
**Email.** sales@kscparts.com



# KOREX BULLDOZER PERFORMANCE ADVANTAGES

KD Bulldozer are track-type dozer with elevated sprocket, hydraulic direct drive, semi-rigid suspended and hydraulic controls. It's new structure of modular assembling and disassembling; with handy, accurate operating system, electric monitoring, KD bulldozer can be equipped with many optional equipment and attachment, it can be used in road building, hydro-electric construction, land clearance, port and min development and other construction field.

# HIGH EFFICIENT BULLDOZER KD SERIES



A VARIETY OF SHOVEL TYPE OPTIONAL, SUITABLE FOR COMPLEX

The bearing adopts short cylindrical bearing, featuring high rotary speed limit and strong bearing capacity.



EFFICIENT COOLING SYSTEM



ANTI-ROLL CAB



FOREST LOGGING CAB



HEXAHEARAL CAB

The different types of cabin can be equipped. The novel hexahedra cad offers excellent visibility, the powerful ventilation and unparalleled dust-free.



CONVENIENT MAINTENANCE

The engine cover is easy to open, and the opening angle is large, which make the maintenance part accessible.



EXTENDS LIFE OF HYDRAULIC SYSTEM



# CORE COMPONENTS

- Heavy-duty design ensures high firmness and reliability
- Maintenance-free high reliability brake system



**HIGH QUALITY ENGINE**

Cummins/shanghai/weichai engine conforming to environmental requirements offers sufficient power to suit various tough tasks.



**TORQUE CONVERTER**

Easy maintenance, stepless speed regulating which ensure perfect match to the machine for an outstanding traction and a stable transmission.



**CONVENIENT GEARBOX**

Hydraulic control gearshift is convenient to operate with the torque converter without the need to stop the machine.



**FINAL DRIVE**

Increase balance and stability in power transmission, reduce noise, extend outstanding reliability and life.



**RELIABLE TRANSMISSION**

Forward 3 speeds and reverse 3 speeds can be gained by actuating hydraulic control valve.



**UNDERCARRIAGE SYSTEM**

Equipped with distinctive lubricated track trains, which greatly improve the service life of undercarriage system.

## ATTACHMENT



**3 TOOTH RIPPER**



**U BLADE**



**STRAIGHT TILT BLADE**



**ANGLE BLADE**



**BLADE FOR GARBAGE**

# BULLDOZER SPECIFICATION

- It can effectively compact various soil layers and rock fill, and can be applied to the constructions of modern freeways, airports, embankment fill, ports.



**KDB130/165**

## SPECIFICATION

Model		Unit	KDB130	KDB165
Operating Weight		kg	13,100	16,800
Engine	Brand	-	WEICHAI	CUMMINS
	Model	-	WP6G125E332	GSL9.3 Tier III
	Rated power	kW/rpm	97	136
	Rated revolution	rpm	2,200	1,850
	Max. torque	N.m/rpm	570/1,450	880/1,100
	Rated fuel consumption	g/kw-h	190	190
Undercarriage	Track pitch	mm	190	203
	Width of shoe	mm	510	560
	Number of track rollers(each side)	-	7	7
	Number of carrier rollers(each side)	-	-	2
	Min. ground clearance	mm	315	445
	Track gauge	mm	1,790	1,880
Work equipment	Dozer type	mm	Power angle tilting blade	Tilt
	Blade width	mm	3,060	3,324
	Ground pressure	kpa	45	56.2
	Gradient	°	30/25	30/25
	Max. digging depth	mm	460	592
	Dozing capacity	m <sup>3</sup>	3.1	4.6
	Overall dimensions	mm	4,922x3,060x2,999	5,167x3,324x3,108
	Gear	1st(F/R)	km/h	-
2nd(F/R)		km/h	-	0~6.9/0~8.4
3rd(F/R)		km/h	-	0~10.8/0~12.9

\* Structure and specification are subject to change without notice.

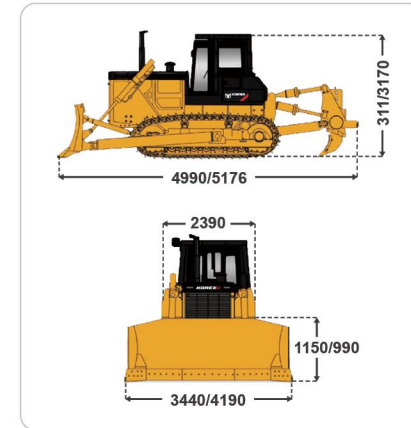
\* In case there is any difference between the description of the machine and the substantial machine, the substantial machine should govern.

# BULLDOZER SPECIFICATION

· It can effectively compact various soil layers and rock fill, and can be applied to the constructions of modern freeways, airports, embankment fill, ports.



## EXTERIOR DRAWING



## SPECIFICATION

### KDB160/160S

Model		Unit	KDB160		KDB160S	
Operating Weight		kg	16,400		16,400	
Engine	Brand	-	WEICHA		WEICHA	
	Model	-	WD10G178E25		WD10G178E25	
	Type	-	4 stroke, water cooling, straight vertical, direct injection			
	Rated power	kW/rpm	131kW@1850rpm		131kW@1850rpm	
	Max. torque	N.m/rpm	830N.m@1100rpm		830N.m@1100rpm	
	Number of cylinders-borexstroke	mm	6-φ126×130		6-φ126×130	
	Starting method	V/kW	Starting motor 24V,7.5		Starting motor 24V,7.5	
	Battery	V/Ah	24V(12V×2)-195Ah		24V(12V×2)-195Ah	
Air cleaner	-	Dry type, precleaned cyclone air cleaner		Dry type, precleaned cyclone air cleaner		
Min. fuel consumption ratio	g/kw-h	214		214		
Transmission system	Torque converter	-	3-element, single-stage, single-phase		3-element, single-stage, single-phase	
	Grade ability	°	30		30	
Hydraulic system of work equipment	Working pressure	Mpa	14		14	
	2000r/min	L/min	243		243	
	Pump type	-	Gear pump		Gear pump	
Undercarriage	Control valve	-	Hand-operated, sliding type		Hand-operated, sliding type	
	Sprocket	-	Segmented		Segmented	
	Number of track rollers(each side)	-	6/7		6/7	
work equipment	Track tension	-	Hydraulic-adjusted		Hydraulic-adjusted	
	Blade type	mm	Straight tilt		Angle	
	Blade width	mm	3,440		3,970	
	Height	mm	1,135		1,040	
	Max.drop below ground	mm	540		540	
	Max.Tilt	mm	400		-	
Track	Blade capacity	m³	4.5		4.3	
	Type	-	Sealed and lubricated single		Sealed and lubricated single	
	Track pitch	mm	203.2		203.2	
	Track width	mm	510		950(1,100)	
	Number of track shoes(each side)	-	37		42	
	Length of track on ground	mm	2,430		2,935	
	Ground clearance	mm	405		500	
Ripper	Track gauge	mm	1,880		2,300	
	Max. digging depth	mm	572		572	
	Max. lift above ground	mm	592		592	
Travel speed	Weight	kg	1,667		1,667	
	1st(F/R)	km/h	3.3/4.3		-	
	2nd(F/R)	km/h	5.8/7.6		-	
	3rd(F/R)	km/h	9.6/12.5		-	

# BULLDOZER SPECIFICATION

· It can effectively compact various soil layers and rock fill, and can be applied to the constructions of modern freeways, airports, embankment fill, ports.



## SPECIFICATION

### KDB170/170S

Model		Unit	KDB170		KDB170S		
Operating Weight		kg	17,220		17,120		
Engine	Brand	-	WEICHA		WEICHA		
	Model	-	WD10G178E25		WD10G156E26		
	Rated power	kW/rpm	131		104		
	Rated revolution	rpm	1,850		1,800		
	Max. torque	N.m/rpm	830/1,000~1,200		780/1,000~1,200		
	Rated fuel consumption	g/kw-h	≤215		≤215		
	Undercarriage	Track pitch	mm	203		203	
		Width of shoe	mm	500		500	
Number of track rollers(each side)		-	6		6		
Number of carrier rollers(each side)		-	2		2		
work equipment	Min. ground clearance	mm	353		353		
	Track gauge	mm	1,880		1,880		
	Dozer type	mm	Angle		Tilt		
	Blade width	mm	3,762		3,442		
	Ground pressure	kpa	65.7		65.3		
	Gradient	°	30/25		30/25		
	Max. digging depth	mm	420		420		
	Dozing capacity	m³	4.9		4.6		
Gear	Overall dimensions	mm	5,716x3,762x3,160		5,447x3,442x3,160		
	1st(F/R)	km/h	2.5/3.53		2.72/3.80		
	2nd(F/R)	km/h	3.3/4.61		3.84/5.36		
	3rd(F/R)	km/h	5.68/7.94		6.13/9.58		
	4th(F/R)	km/h	7.53/10.53		8.14/11.37		
	5th(F/R)	km/h	10.64		11.46		

\* Structure and specification are subject to change without notice.

\* In case there is any difference between the description of the machine and the substantial machine, the substantial machine should govern.



# BULLDOZER SPECIFICATION

· It can effectively compact various soil layers and rock fill, and can be applied to the constructions of modern freeways, airports, embankment fill, ports.



## KDB180/185

### SPECIFICATION

Model		Unit	KDB180		KDB185
Operating Weight		kg	17,550	18,050	18,500
Engine	Brand	-	WEICHAI		WEICHAI
	Model	-	WD10G178E25		WD10G178E25
	Rated power	kW/rpm	131		131
	Rated revolution	rpm	1,850		1,850
	Max. torque	N.m/rpm	830/1,000~1,200		830/1,000~1,200
	Rated fuel consumption	g/kw-h	≤215		≤215
Undercarriage	Track pitch	mm	203	203	203
	Width of shoe	mm	500	500	1,000
	Number of track rollers(each side)	-	6	6	7
	Number of carrier rollers(each side)	-	2	2	2
	Min. ground clearance	mm	353	353	375
	Track gauge	mm	1,880	1,880	2,300
work equipment	Dozer type	mm	Tilt	U	Tilt
	Blade width	mm	3,442	3,467	4,210
	Ground pressure	kpa	66.9	67.4	30
	Gradient	°	30/25	30/25	30/25
	Max. digging depth	mm	420	420	400
	Dozing capacity	m <sup>3</sup>	4.6	5.2	4.8
	Overall dimensions	mm	5,447x3,442x3,160	5,447x3,442x3,160	5,530x4,210x3,190
Gear	1st(F/R)	km/h	3.32/4.00		2.7/3.78
	2nd(F/R)	km/h	6.26/7.57		3.56/4.97
	3rd(F/R)	km/h	11.4/13.87		6.09/8.51
	4th(F/R)	km/h	-		8.08/11.28
	5th(F/R)	km/h	-		11.26

\* Structure and specification are subject to change without notice.

\* In case there is any difference between the description of the machine and the substantial machine, the substantial machine should govern.

# BULLDOZER SPECIFICATION

· It can effectively compact various soil layers and rock fill, and can be applied to the constructions of modern freeways, airports, embankment fill, ports.



## KD190/190S/190T

### SPECIFICATION

Model		Unit	KDB190	KDB190S	KDB190T
Operating Weight		kg	19,200	19,000	19,000
Engine	Brand	-	WEICHAI		WEICHAI
	Model	-	WP10G178E355	WD10G178E25	WD10G178E25
	Rated power	kW/rpm	131	131	131
	Rated revolution	rpm	1,850	1,850	1,850
	Max. torque	N.m/rpm	830/1,000~1,200	830/1,000~1,200	830/1,000~1,200
	Rated fuel consumption	g/kw-h	≤200	≤210	≤215
Undercarriage	Track pitch	mm	203.2	203.2	203
	Width of shoe	mm	1,070	1,070	1,000
	Number of track rollers(each side)	-	7	7	7
	Number of carrier rollers(each side)	-	2	2	2
	Min. ground clearance	mm	510	510	375
	Track gauge	mm	2,170	2,170	2,300
work equipment	Dozer type	mm	Tilt	Straight	Tilt
	Blade width	mm	4,240	4,240	4,210
	Ground pressure	kpa	27	26.8	31
	Gradient	°	30/25	30/25	30/25
	Max. digging depth	mm	430	430	400
	Dozing capacity	m <sup>3</sup>	4.3	4.3	4.8
	Overall dimensions	mm	5,520x4,240x3,180	5,503x4,240x3,191	5,530x4,210x3,190
Gear	1st(F/R)	km/h	3.29/4.28	2.7/3.5	3.59/4.33
	2nd(F/R)	km/h	5.82/7.59	3.7/4.9	6.76/8.90
	3rd(F/R)	km/h	9.63/12.53	5.4/7.0	12.37/14.96
	4th(F/R)	km/h	-	7.6/9.8	-
	5th(F/R)	km/h	-	11	-

\* Structure and specification are subject to change without notice.

\* In case there is any difference between the description of the machine and the substantial machine, the substantial machine should govern.

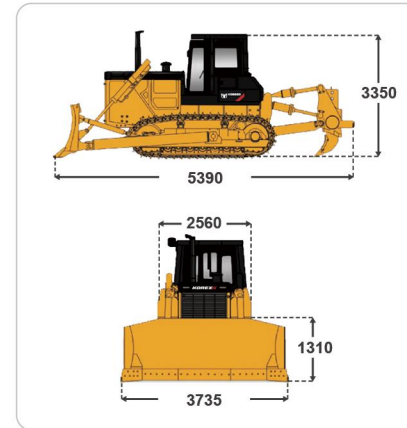


# BULLDOZER SPECIFICATION

· It can effectively compact various soil layers and rock fill, and can be applied to the constructions of modern freeways, airports, embankment fill, ports.



## EXTERIOR DRAWING



## SPECIFICATION

### KDB220/220S

Model		Unit	KDB220			KDB220S		
Operating Weight		kg	23,500			23,500		
Engine	Brand	-	Cummins			Cummins		
	Model	-	NT855-C280S10			NT855-C280S10		
	Type	-	Straight vertical, four-stroke, water cooling, PT pump injection, turbocharged					
	Rated power	kW/rpm	175kW			175kW		
	Rated Speed	N.m/rpm	1800r/min			1800r/min		
	Number of cylinders-borexstroke	mm	6-φ139.7×152.4			6-φ139.7×152.4		
	Starting method	V/kW	Starting motor 24V,11			Starting motor 24V,11		
	Battery	V/Ah	24V(12V×2)-195Ah			24V(12V×2)-195Ah		
	Air cleaner	-	Dry horizontal type with precleaner			Dry horizontal type with precleaner		
Min fuel consumption ratio	g/kw-h	218			218			
Transmission system	Torque converter	-	3-element, single-stage, single-phase			3-element, single-stage, single-phase		
	Working pressure	Mpa	14			14		
Hydraulic system of work equipment	2000r/min	L/min	262			262		
	Pump type	-	Gear pump			Gear pump		
	Control valve	-	Hand-operated plunger sarvo controlling			Hand-operated plunger sarvo controlling		
Undercarriage	Sprocket	-	Segmented			Segmented		
	Number of track rollers(each side)	-	6(4 Single, 2 Double)/ 8(5 Single, 3 Double)			6(4 Single, 2 Double)/ 8(5 Single, 3 Double)		
	Track tension	-	Hydraulic-adjusted			Hydraulic-adjusted		
work equipment	Blade type	mm	Straight tilt	Angle	Semi-U	-		
	Blade width	mm	3,735	4,365	3,725	-		
	Height	mm	1,310	1,055	1,374	-		
	Max.drop below ground	mm	538	535	540	-		
	Max.Tilt	mm	735	500	755	-		
Blade capacity	m <sup>3</sup>	6.4	4.7	7.5	-			
Track	Type	-	Sealed, single grouser			Sealed, single grouser		
	Track pitch	mm	216			216		
	Track width	mm	560			910		
	Number of track shoes(each side)	-	380			45		
	Length of track on ground	mm	2,730			3,480		
	Ground clearance	mm	405			450		
Ripper	Track gauge	mm	2,000			2,250		
	Type	-	Single/Three Shank			Single/Three Shank		
	Max. digging depth	mm	695/666			695/666		
	Max. lift above ground	mm	515/555			515/555		
Travel speed	Weight	kg	2,453/2,495			2,453/2,495		
	1st(F/R)	km/h	3.6/4.3			-		
	2nd(F/R)	km/h	6.5/7.7			-		
3rd(F/R)	km/h	11.2/13.2			-			

# BULLDOZER SPECIFICATION

· It can effectively compact various soil layers and rock fill, and can be applied to the constructions of modern freeways, airports, embankment fill, ports.



## SPECIFICATION

### KD240/250/255

Model		Unit	KDB240	KDB250	KDB255	
Operating Weight		kg	24,840	24,800	25,500	
Engine	Brand	-	CUMMINS	CUMMINS /WEICHAI	WEICHAI	
	Model	-	NT855-C280S10	NT855-C280S10 / WD12G250E302	WP12G250E302	
	Rated power	kW/rpm	185	185	185	
	Rated revolution	rpm	2,000	2,100	2,100	
	Max. torque	N.m/rpm	1,050/1,400	1,097/1,500	1,200/750~1,400	
	Rated fuel consumption	g/kw-h	217	≤235	182~202	
	Undercarriage	Track pitch	mm	216	216	216
		Width of shoe	mm	560	560	560
		Number of track rollers(each side)	-	7	7	7
Number of carrier rollers(each side)		-	2	-	-	
Min. ground clearance		mm	405	404	394	
work equipment	Track gauge	mm	2,000	1,980	1,980	
	Dozer type	mm	Tilt	Tilt	Tilt	
	Blade width	mm	3,666	3,552	3,550	
	Ground pressure	kpa	76	74.1	77.9	
	Gradient	°	30/25	30/25	30/25	
	Max. digging depth	mm	540	498	498	
	Dozing capacity	m <sup>3</sup>	7.8	8.1	8.1	
	Overall dimensions	mm	5,733x3,666x3,380	5,677x3,550x3,402	5,876x3,550x3,402	
	Gear	1st(F/R)	km/h	0~3.8/0~4.9	0~3.9/0~4.8	0~10.5/0~10.5
		2nd(F/R)	km/h	0~6.8/0~8.5	0~6.5/0~8.2	-
3rd(F/R)		km/h	0~11.8/0~8.5	0~10.9/0~13.2	-	
4th(F/R)		km/h	0~11.8/0~14.3	-	-	

\* Structure and specification are subject to change without notice.

\* In case there is any difference between the description of the machine and the substantial machine, the substantial machine should govern.



# BULLDOZER SPECIFICATION

It can effectively compact various soil layers and rock fill, and can be applied to the constructions of modern freeways, airports, embankment fill, ports.



**KD260/270**

## SPECIFICATION

Model		Unit	KDB260	KDB270
Operating Weight		kg	26,710	26,800
Engine	Brand	-	CUMMINS	CUMMINS / WEICHAI
	Model	-	NT855-C280S10	NT855-C280S10 / WD12G250E302
	Rated power	kW/rpm	185/2,000	185
	Rated revolution	rpm	2,000	2,100
	Max. torque	N.m/rpm	1,050/1,400	1,200/1,300~1,400
	Rated fuel consumption	g/kw-h	217	≤235
	Undercarriage	Track pitch	mm	216
Width of shoe		mm	560	910
Number of track rollers(each side)		-	8	7
Number of carrier rollers(each side)		-	2	-
Min. ground clearance		mm	510	484
Track gauge		mm	2,250	2,235
work equipment	Dozer type	mm	Tilt	Tilt
	Blade width	mm	4,310	4,382
	Ground pressure	kpa	42	46.2
	Gradient	°	30/25	30/25
	Max. digging depth	mm	500	635
	Dozing capacity	m <sup>3</sup>	8.4	5.8
	Overall dimensions	mm	6,060x4,310x3,425	5,473x4,382x3,482
Gear	1st(F/R)	km/h	0~3.8/0~4.9	0~3.9/0~4.8
	2nd(F/R)	km/h	0~6.8/0~8.5	0~6.5/0~8.2
	3rd(F/R)	km/h	0~11.8/0~14.3	0~10.9/0~13.2

\* Structure and specification are subject to change without notice.

\* In case there is any difference between the description of the machine and the substantial machine, the substantial machine should govern.

# BULLDOZER SPECIFICATION

It can effectively compact various soil layers and rock fill, and can be applied to the constructions of modern freeways, airports, embankment fill, ports.



**KDB320**

## SPECIFICATION

Model		Unit	KDB320		
Operating Weight		kg	37,200		
Engine	Brand	-	Cummins		
	Model	-	NTA855-C360S10		
	Type	-	Turbocharged, aftercooled, Four- Stroke		
	Rated power	kW/rpm	257kW@2000rpm		
	Max. torque	N.m/rpm	1440N.m@2000rpm		
	Number of cylinders-borexstroke	mm	6-φ139.7×152.4		
	Starting method	V/kW	Electric starting 24V11kw		
	Min. fuelconsumption ratio	g/kw-h	245		
Transmission system	Torque converter	-	3-element, single-stage, single-phase		
Hydraulic system of work equipment	Working pressure	Mpa	14		
	2000r/min	L/min	355		
	Pump type	-	Gear pump		
Undercarriage	Sprocket	-	Segmented		
	Number of track rollers(each side)	-	7(5 Single, 2 Double)		
	Track tension	-	Hydraulic-adjusted		
work equipment	Blade type	mm	Straight tilt	Angle	Semi-U
	Blade width	mm	4,150	5,000	4,130
	Height	mm	1,610	1,140	1,710
	Max.drop below ground	mm	560	630	560
	Max.Tilt	mm	1,000	500	1,000
	Blade capacity	m <sup>3</sup>	10	6	11.9
Track	Type	-	Sealed, single grouser		
	Track pitch	mm	228.6		
	Track width	mm	560		
	Number of track shoes(each side)	-	41		
	Length of track on ground	mm	3,150		
	Ground clearance	mm	500		
	Track gauge	mm	2,140		
Ripper	Type	-	Single/Three Shank		
	Max. digging depth	mm	470/543		
	Max. lift above ground	mm	965/883		
Travel speed	Weight	kg	3,252/3,802		
	1st(F/R)	km/h	3.6/4.4		
	2nd(F/R)	km/h	6.6/7.8		
	3rd(F/R)	km/h	11.5/13.5		

## EXTERIOR DRAWING

