

# SUPERIOR PERFORMANCE SPECIAL CRANE

LITHGTING TOWER | WRECKER | WRECKER CRANE | SAFETY LOADER

**K** WRECKER KOREA



## OFFICE

Office. 603 6th floor 298, Beotkkot-ro, Geumcheon-gu, Seoul, Republic of Korea

Factory. 246 Gogol-gil, Deogyang-gu, Goyang-si, Gyeonggi-do, Republic of Korea

Tel. (+82)2038-0008

Email. sales@kscparts.com

**K** WRECKER KOREA

**Absolutely Powerful**

# WRECKER | SLIM UNDER LIFT

## FEATURE & BENEFITS

- Powerful mobility and more sophisticated design
- Option : Working Lamp, Auto Locking, Sub Winch, Tool Box, Wireless Remote-Controller, Air Compressor

## PRODUCT



## TECHNICAL SPECIFICATION

### *Slim under-lift*

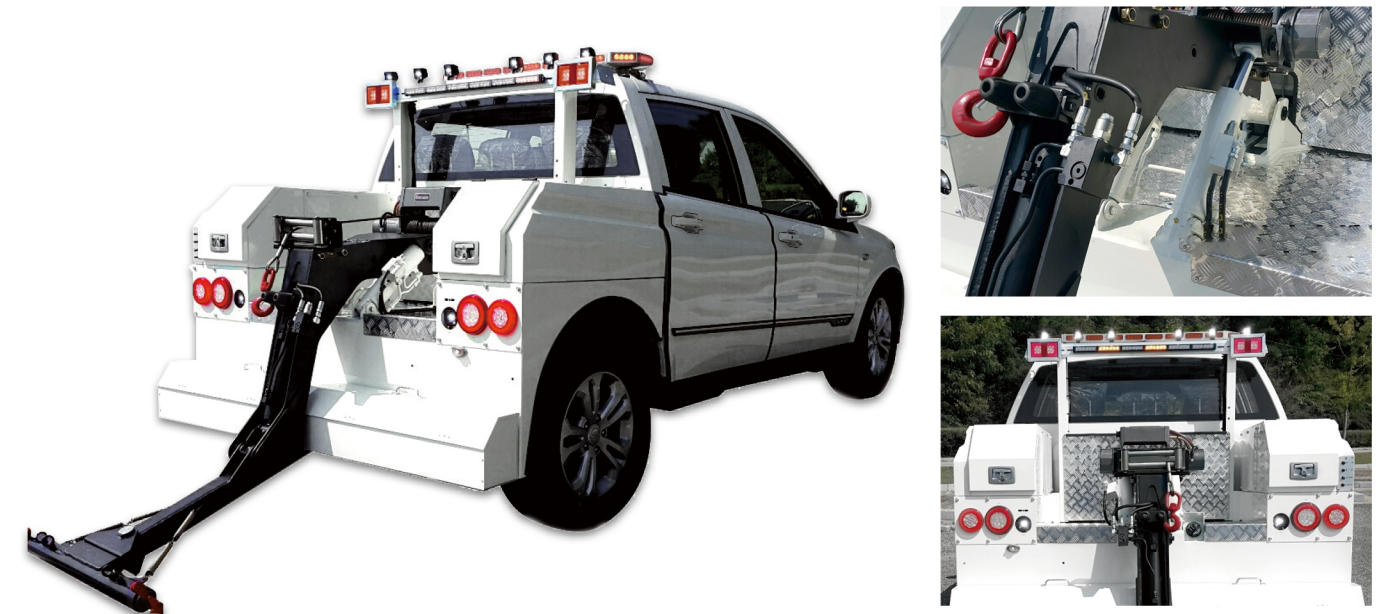
Model	Unit	KWC-SUL
Type	-	Slim under-lift
Boarding	-	2 Persons
Application	-	For Traction
Max Power	ps/rpm	155ps/4,000rpm
Displacement	cc	1,998cc
Fuel	-	Diesel
Fuel Consumption	km/l	11.6(km/l)
Transmission	-	Automatic
Loading Weight	kg	500kg
Weight	kg	2,875kg
Length	mm	5,165mm
Width	mm	1,900mm
Height	mm	1,830mm
Option	-	Working Lamp, Auto Locking, Sub Winch, Tool Box, Wireless Remote-Controller, Air Compressor, Air Tank, Strobe Light, Sub Control Switch

# WRECKER | SPORTS WRECKER

## FEATURE & BENEFITS

- Small vehicles for emergency rescue assistance equipped with life search and lighting functions
- Support for rescue, Construction site Emergency Recovery Support, Support for event

## PRODUCT



## TECHNICAL SPECIFICATION

### *Sports Wrecker*

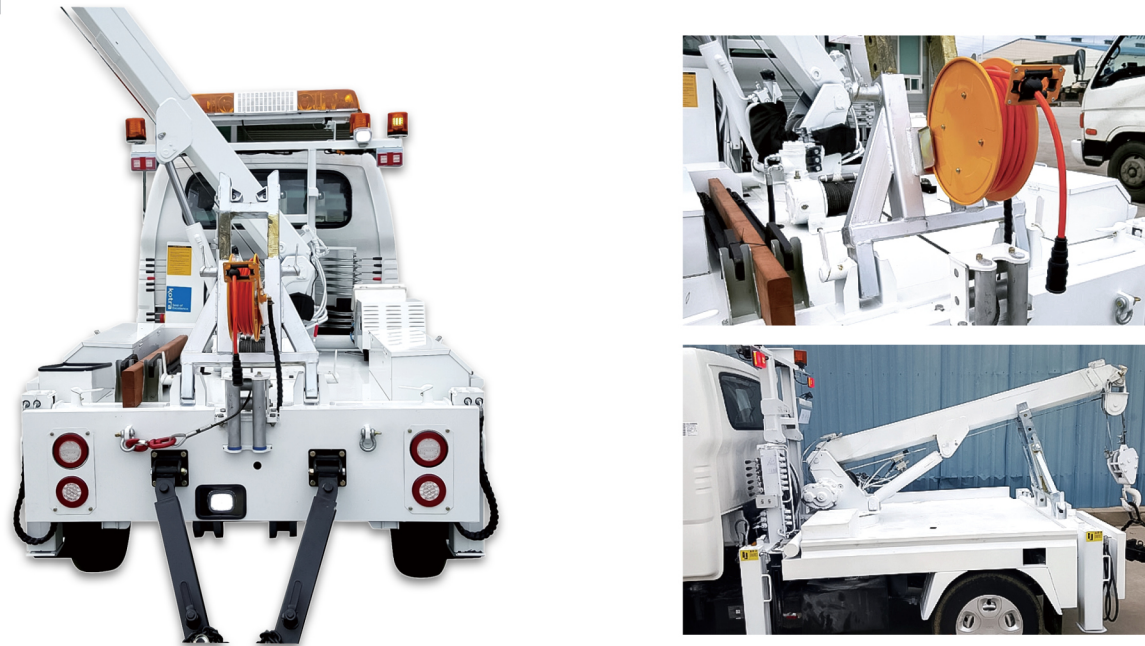
Model	Unit	KWC-SW
Type	-	Sports Wrecker
Boarding	-	5 Persons
Application	-	For Traction
Max Power	ps/rpm	155ps/4,000rpm
Displacement	cc	1,998cc
Fuel	-	Diesel
Fuel Consumption	km/l	11.6(km/l)
Transmission	-	Automatic
Loading Weight	kg	500kg
Weight	kg	2,760kg
Length	mm	4,965mm
Width	mm	1,910mm
Height	mm	1,790mm
Option	-	Working Lamp, Auto Locking, Sub Winch, Tool Box, Wireless Remote-Controller, Air Compressor, Air Tank, Strobe Light, Sub Control Switch

# WRECKER I BOOM WRECKER

## FEATURE & BENEFITS

· Widely used in road, police traffic, airports, docks, auto repair company, industry and highway departments, timely, fast clean-up accident, failure, illegal and other vehicles

## PRODUCT



## TECHNICAL SPECIFICATION

### Boom Wrecker

Model	Unit	KWC-BW
Type	-	Boom Wrecker
Boarding	-	3 Persons
Application	-	For Traction
Max Power	ps/rpm	133ps/3,800rpm
Displacement	cc	2,497cc
Fuel	-	Diesel
Fuel Consumption	km/l	12.3(km/l)
Transmission	-	Manual(5/1)
Loading Weight	kg	500kg
Weight	kg	2,600kg
Length	mm	4,880mm
Width	mm	1,750mm
Height	mm	2,060mm
Option	-	Working Lamp, Automatic Locking Device, Sub Winch, Wireless Remote-Controller, Air Compressor, Air Tank, Tool Box, Rear Outrigger, Strobe Light

# WRECKER I UNDER LIFT WRECKER

## FEATURE & BENEFITS

· Wrecker truck equipped with lifting winch device and wheel bracket which can lift, towing, back load and transport

## PRODUCT



## TECHNICAL SPECIFICATION

### Under Lift

Model	Unit	KWC-UL12
Type	-	Under Lift
Boarding	-	3 Persons
Application	-	For Traction
Max Power	ps/rpm	155ps/4,000rpm
Displacement	cc	2,810cc
Fuel	-	Diesel
Fuel Consumption	km/l	11.4(km/l)
Transmission	-	Manual(5/1)
Loading Weight	kg	500kg
Weight	kg	2,340kg
Length	mm	4,805mm
Width	mm	1,910mm
Height	mm	2,000mm
Option	-	Working Lamp, Automatic Locking Device, Sub Winch, Wireless Remote-Controller, Air Compressor, Air Tank, Tool Box, Strobe Light

# WRECKER I BOOM UNDER LIFT

## FEATURE & BENEFITS

- K-Crane Under lift Tow Trucks are an efficient solution for moving illegally parked or broken down vehicles. The boom and wheel lifter integrated into a single unit makes the job

## PRODUCT



## TECHNICAL SPECIFICATION

### Boom under Lift

Model	Unit	KWC-BUL50	KWC-BUL70	
Overall Length	mm	8,170mm	-	
Overall Width	mm	2,495mm	-	
Overall Height	mm	3,350mm	-	
Wheel base	mm	4,650mm	-	
Max. lifting weight	kg	-	6,990kg	
Crane	Capacity	ton/m	10ton/m	
		kg/m	Retracted: 2,450kg/3.9m	Retracted: 4,200kg/3.8m
		kg/m	Extended: 1,000kg/8.7m	Extended: 1,250kg/10.5m
	Arm extension(total length)	m	8.7m	10.5m
	Winch	ton	5ton	7ton
	Max. Angle	°	75°	75°
	Max. Hook Height	m	10.5m	14m
	Working Radius	kg	8.7m	10.5m
	Boom Length	mm	Min: 4.16m/Max: 8.96m	Min: 3.80m/Max: 10.5m
	Rotation	mm	360°(Continuous)	360°(Continuous)
Boom Section	mm	3 stages	3 stages	

# WRECKER I LARGE WRECKER

## FEATURE & BENEFITS

- High quality and reasonable price wrecker towing truck,wrecker truck
- with two units wheels for loading car or trucks

## PRODUCT



## TECHNICAL SPECIFICATION

### Large Size

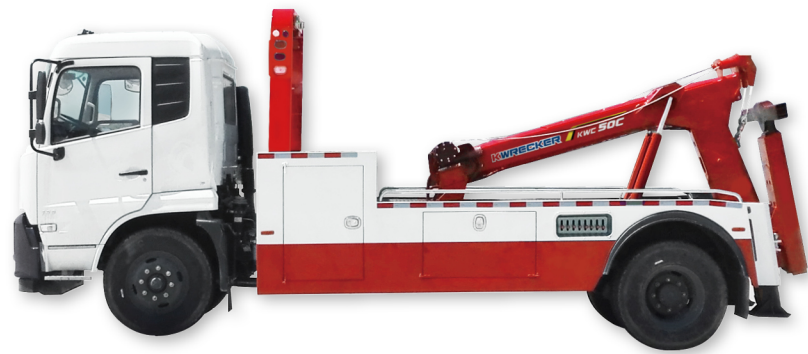
Model	Unit	KWC-R50	KWC-T100	KWC-H150
Capacity	ton	5~7t	10t	15t
Boarding	-	3 persons	2 Persons	2 Persons
Application	-	For Traction	For Traction	For Traction
Max Power	ps/rpm	235ps/2,500rpm	240ps/2,700rpm	380ps/1,900rpm
Displacement	cc	6,606cc	5,880cc	5piston/1,900rpm
Fuel	-	Diesel	Diesel	Diesel
Fuel Consumption	km/l	7.7(km/l)	7.5(km/l)	4.1(km/l)
Transmission	-	Manual(6/1)	Manual(6/1)	Auto(F12/B2)
Loading Weight	kg	2,500kg	2,300kg	16,000kg
Weight	kg	9,780kg	13,280kg	11,500kg
Length	mm	6,945mm	8,100mm	10,320mm
Width	mm	2,280mm	2,495mm	2,495mm
Height	mm	3,180mm	3,100mm	3,450mm
Option	-	Oil pressure, Real Outrigger, Automatic Locking Device, Wireless Remote-Controller, Air Compressor, Air- Suspension, Air Tank, Tool Box, Strobe Light, Working Lamp		

# WRECKER | HEAVY WRECKER

## FEATURE & BENEFITS

- Wide working radius to rescue your disabled vehicle with ease, Quick and easy operation, Easy manual and remote control stations with clear user guidance.

## PRODUCT



## TECHNICAL SPECIFICATION

5T

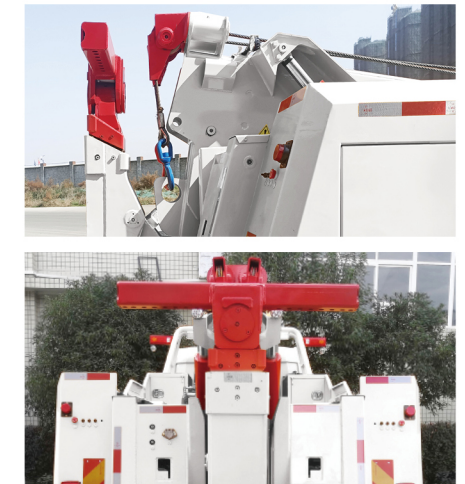
Model		Unit	KWC50C
Chassis	Chassis Brand		- Daewoo truck
	Engine	Model	- Doosan Infracore DL06K (Euro V)
		Max. Power	Kw/rpm 280ps(205.5kW) @ 2,500 rpm
	Dimensions	Overall length	mm 8,115
		Overall width	mm 2,315
		Overall height	mm 2,850
		Wheelbase	mm 4,500
Weight	Permissible G.V.W	kg 15,000	
	Main Components Parameter		
A. Boom	Boom retracted capacity	kg 6,000	
	Boom extended capacity	kg 3,000	
	Length of the basic boom	mm 3,130	
	Cylinder telescopic stroke	mm 3,130	
	Max. lifting height	mm 3,300	
	Numbers of the boom	- 2	
Range of the boom lifting angle		° 3~26.5	
B. Under-lift	Lift fully retracted	Kg 6,000	
	Lift fully extended	kg 3,500	
	Max. effective length	mm 1,970	
	Telescopic distance	mm 720	
	Range of folding angle	° -4~93	
	Range of folding angle(with Load)	° -4~9	
The height from ground to the fork at full extension		mm 1,520	
C. Winch	Rated traction of each winch	kN 3,000	
	Cable diameter	φ 11	
	Cable length	m 15	
	Cable line speed	m/min 3.23	
D. Outrigger	Back Outrigger type	- Tilt type	
	Lateral span of rear outrigger	mm 1,410	

# WRECKER | HEAVY WRECKER

## FEATURE & BENEFITS

- Wide working radius to rescue your disabled vehicle with ease, Quick and easy operation, Easy manual and remote control stations with clear user guidance.

## PRODUCT



## TECHNICAL SPECIFICATION

10T

Model		Unit	KWC100C
Chassis	Chassis Brand		- Daewoo truck
	Engine	Model	- Doosan Infracore DL06K (Euro V)
		Max. Power	Kw/rpm 280ps(205.5kW) @ 2,500 rpm
	Dimensions	Overall length	mm 9,965
		Overall width	mm 2,470
		Overall height	mm 2,945
		Wheelbase	mm 5,970
Weight	Permissible G.V.W	kg 24,000	
	Main Components Parameter		
A. Boom	Boom retracted capacity	kg 12,000	
	Boom extended capacity	kg 4,500	
	Length of the basic boom	mm 4,150	
	Cylinder telescopic stroke	mm 2,900	
	Max. lifting height	mm 4,830	
	Numbers of the boom	- 2	
Range of the boom lifting angle		° 3.5 ~35.5	
B. Under-lift	Lift fully retracted	Kg 8,000	
	Lift fully extended	kg 5,000	
	Max. effective length	mm 2,765	
	Telescopic distance	mm 1,340	
	Range of folding angle	° -10~85	
	Range of folding angle(with Load)	° -7~ 5	
The height from ground to the fork at full extension		mm ≤ 900	
C. Winch	Pulling power rating of winch	kN 80x2	
	Cable diameter	φ 16	
	Cable length	m 30x2	
	Cable line speed	m/min 5	
D. Outrigger	Type of rear outriggers	- Inclined -strut	
	Transverse span of rear outriggers	mm 1,440	

# WRECKER | HEAVY WRECKER

## FEATURE & BENEFITS

- Wide working radius to rescue your disabled vehicle with ease, Quick and easy operation, Easy manual and remote control stations with clear user guidance.

## PRODUCT



## TECHNICAL SPECIFICATION

15T

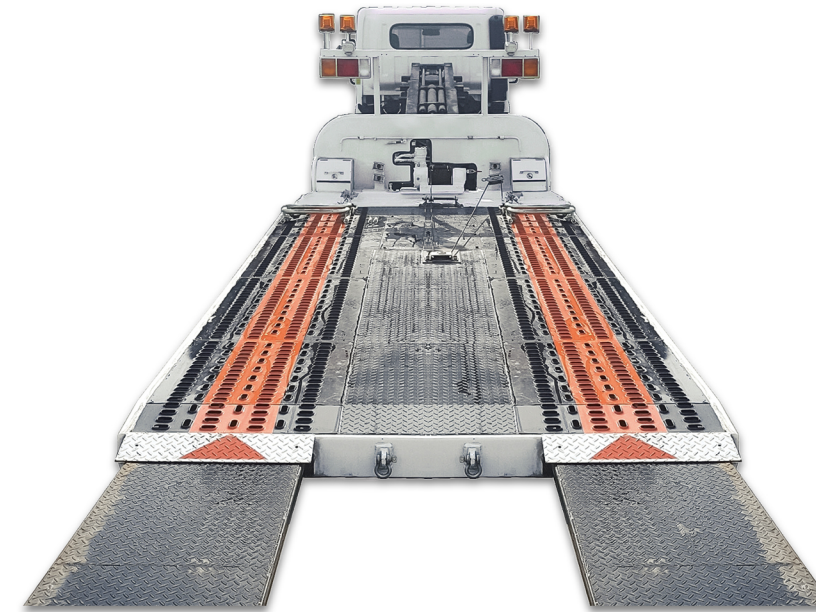
Model		Unit	KWC150C	
Chassis	Chassis Brand		-	
	Daewoo truck			
	Engine	Model	-	DL08K (Euro V)
		Max. Power	Kw/rpm	350ps(257.4kW) @ 2,100 rpm
	Dimensions	Overall length	mm	12,025
		Overall width	mm	2,495
		Overall height	mm	3,070
Wheelbase		mm	7,025	
Weight	Permissible G.V.W	kg	29,500	
	Main Components Parameter			
A. Boom	Boom retracted capacity	kg	16,000	
	Boom extended capacity	kg	8,500	
	Length of the basic boom	mm	4,830	
	Cylinder telescopic stroke	mm	3,300	
	Max. lifting height	mm	5,210	
	Numbers of the boom	-	2	
B. Under-lift	Range of the boom lifting angle	°	3.5~26	
	Lift fully retracted	Kg	12,000	
	Lift fully extended	kg	6,500	
	Max. effective length	mm	2,760	
	Telescopic distance	mm	1,250	
	Range of folding angle	°	-5~85	
	Range of folding angle(with Load)	°	-5~6	
C. Winch	The height from ground to the fork at full extension	mm	≤ 900	
	Rated traction of each winch	kN	80	
	Cable diameter	φ	16	
	Cable length	m	30x2	
D. Outrigger	Cable line speed	m/min	5	
	Back Outrigger type	-	Tilt type	
	Lateral span of rear outrigger	mm	1,440	

# SAFETY LOADER | LOW INCLINING

## FEATURE & BENEFITS

- K-Crane Safety Loaders are designed for easy loading of a car onto the deck for transportation
- The deck is hydraulically inclined to the ground level so that a car can drive onto the deck

## PRODUCT



## TECHNICAL SPECIFICATION

Low Inclining type

Model	Unit	KSL-LI500	KSL-LI550
Type	-	Low Inclining	Low Inclining
Boarding	-	3 Persons	3 Persons
Application	-	For Traction	For Traction
Max Power	ps/rpm	170ps/2,500rpm	170ps/2,500rpm
Displacement	cc	3,933cc	3,933cc
Fuel	-	Diesel	Diesel
Fuel Consumption	km/l	10.4(km/l)	10.4(km/l)
Transmission	-	Manual(5/1)	Manual(5/1)
Loading Weight	kg	2,000kg	1,700kg
Weight	kg	5,070kg	5,520kg
Length	mm	7,055mm	7,695mm
Width	mm	2,205mm	2,290mm
Height	mm	2,285mm	2,290mm
Option	-	Oil Pressure, Rear Outrigger, Automatic Locking Device, Wireless Remote-Controller, Air Compressor, Air-Suspension, Air Tank, Tool Box, Strobe Light, Working Lamp	

# SAFETY LOADER I DUMPING

## FEATURE & BENEFITS

- K-Crane Under lift Tow Trucks are an efficient solution for moving illegally parked or broken down vehicles. The boom and wheel lifter integrated into a single unit makes the job

## PRODUCT



## TECHNICAL SPECIFICATION

### Dumping type

Model	Unit	KSL-D600
Type	-	Dumping
Boarding	-	3 Persons
Application	-	For Traction
Max Power	ps/rpm	170ps/2,500rpm
Displacement	cc	3,933cc
Fuel	-	Diesel
Fuel Consumption	km/l	10.4(km/l)
Transmission	-	Manual(5/1)
Loading Weight	kg	1,700kg
Weight	kg	6,095kg
Length	mm	6,965mm
Width	mm	2,320mm
Height	mm	2,305mm
Option	-	Oil Pressure, Rear Outrigger, Automatic Locking Device, Wireless Remote-Controller, Air Compressor, Air-Suspension, Air Tank, Tool Box, Strobe Light, Working Lamp

# SAFETY LOADER I FOLDING 1ST

## FEATURE & BENEFITS

- No need to worry about AS with excellent parts materials and advanced technology
- Customized to meet your specifications, such as adjusting the distance between shafts

## PRODUCT



## TECHNICAL SPECIFICATION

### Folding type

Model	Unit	KSL-1F
Type	-	Folding system 1st level
Boarding	-	
Application	-	
Max Power	ps/rpm	
Displacement	cc	
Fuel	-	
Fuel Consumption	km/l	
Transmission	-	
Loading Weight	kg	
Weight	kg	
Length	mm	
Width	mm	
Height	mm	
Option	-	

Safety loader can be produced based on order specifications.

# SAFETY LOADER I FOLDING 2ND

## FEATURE & BENEFITS

- K-Crane Safety Loaders are designed for easy loading of a car onto the deck for transportation
- Technology to get love calls from overseas

## PRODUCT



## TECHNICAL SPECIFICATION

### Folding type

Model	Unit	KSL-2F
Type	-	Folding system 2nd level
Boarding	-	
Application	-	
Max Power	ps/rpm	
Displacement	cc	
Fuel	-	
Fuel Consumption	km/l	
Transmission	-	Safety loader can be produced based on order specifications.
Loading Weight	kg	
Weight	kg	
Length	mm	
Width	mm	
Height	mm	
Option	-	

# SAFETY LOADER I FOLDING 2ND

## FEATURE & BENEFITS

- K-Crane Safety Loaders are designed for easy loading of a car onto the deck for transportation
- Technology to get love calls from overseas

## PRODUCT



## TECHNICAL SPECIFICATION

### Folding type

Model	Unit	KSL-2FLR
Type	-	Folding system 2nd level-left & right
Boarding	-	
Application	-	
Max Power	ps/rpm	
Displacement	cc	
Fuel	-	
Fuel Consumption	km/l	
Transmission	-	Safety loader can be produced based on order specifications.
Loading Weight	kg	
Weight	kg	
Length	mm	
Width	mm	
Height	mm	
Option	-	



# SAFETY LOADER | SLIDING

## FEATURE & BENEFITS

- K-Crane Safety Loaders are designed for easy loading of a car onto the deck for transportation
- Technology to get love calls from overseas

## PRODUCT



## TECHNICAL SPECIFICATION

### Sliding type

Model	Unit	KSL-S
Type	-	Sliding model
Boarding	-	
Application	-	
Max Power	ps/rpm	
Displacement	cc	
Fuel	-	
Fuel Consumption	km/l	
Transmission	-	Safety loader can be produced based on order specifications.
Loading Weight	kg	
Weight	kg	
Length	mm	
Width	mm	
Height	mm	
Option	-	

# SAFETY LOADER | LOW INCLINING BOX

## FEATURE & BENEFITS

- Powerful mobility and more sophisticated design
- The loaded car is secured by a set of tire stoppers and lacing wires

## PRODUCT



## TECHNICAL SPECIFICATION

### Low Inclining Box

Model	Unit	KSL-LID50
Type	-	Low Inclining Box type
Boarding	-	3 Persons
Application	-	For Traction
Max Power	ps/rpm	170ps/2,500rpm
Displacement	cc	6,299cc
Fuel	-	Diesel
Fuel Consumption	km/l	10.2(km/l)
Transmission	-	Automatic
Loading Weight	kg	5,000kg
Weight	kg	7,190kg
Length	mm	9,200mm
Width	mm	2,485mm
Height	mm	2,755mm
Option	-	Oil Pressure, Rear Outrigger, Automatic Locking Device, Wireless Remote-Controller, Air Compressor, Air-Suspension, Air Tank, Tool Box, Strobe Light, Working Lamp

# LIGHTING TOWER

## FEATURE & BENEFITS

- This light tower guarantees a reliability and perfect sustainability
- Powerful mobility and more sophisticated design

## PRODUCT



## TECHNICAL SPECIFICATION

### Lighting Tower

Model	Unit	KWC-LT1
Type	-	Lighting Tower
Boarding	-	2 Persons
Fuel	-	Diesel
Width	mm	1,980mm
safety device	-	Outrigger 4
Length	mm	4,800mm
Maximum height	mm	12m
Control method	-	Computer, Joystick
Infrared exploration	-	More than 200m-1km
Thermal image exploration	-	More than 300m-1km
Lighting device	-	600w class
Lighting distance	-	More than 100m
Lighting Support Time	-	More than 10 hours
Driving method	-	Rechargeable battery

# OTHER EQUIPMENTS

## FEATURE & BENEFITS

- K-Crane Under lift Tow Trucks are an efficient solution for moving illegally parked or broken-down vehicles. The boom and wheel lifter integrated into a single unit makes the job

## PRODUCT



Police agency



Navy/Air force



Export Truck(Wrecker)



Tender Truck

## TECHNICAL SPECIFICATION

### Other Equipments

Model	Unit	Police agency	Air force	Navy/Air force	Export Truck	Tender Truck
Type	-	Boom under Lift	M3 Crane	Wrecker	Large size wrecker	MND
Capacity	ton	3.5t	3.5t	2.5t	10t	-