



OFFICE

Office. 603 6th floor 298, Beotkkot-ro, Geumcheon-gu, Seoul, Republic of Korea
Factory. 47-3, Geomdan-ro 326beon-gil, Seo-gu, Incheon, Republic of Korea
Tel. (+82)2038-0008
Email. sales@kscparts.com

Powerful Hydraulic K-Track TRACK ROLLERS



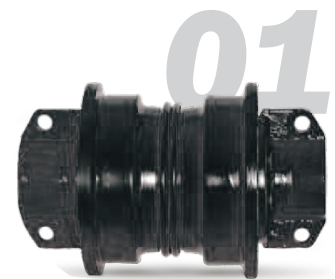
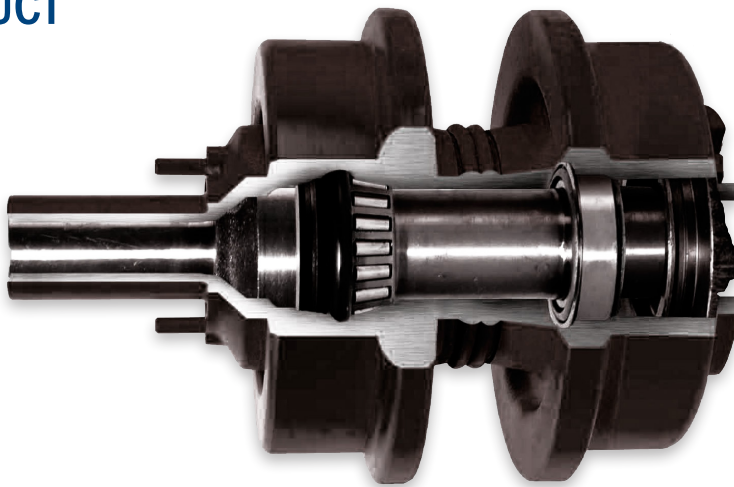
FEATURE & BENEFITS

K-TRACK offers a wide range of track rollers for the most popular machine models. All K-TRACK rollers are engineered with forged alloy steel which undergoes a proper heat treatment allowing durability for wear and impact.

They are produced with cutting edge processes such as rotary friction welding robots and induction heat treatments to ensure proper hardness levels.

K-TRACK rollers are highly praised in the market as a product with a long wear life, and impact resistance.

PRODUCT



SPECIFICATION

Part No.	Application
1231186	245
1787293	345
8E4573	215, 219, 225
8E5745	215B
8E7494	215B, 225
8E4623	215C, 219D, 225D
8E4579	235C/D
8E0830	245B/D, 235D
1634143	315, 315B, 345, 320/B/C/D
1634147	322, 324D, 325B
1634145	322, 325D, 330D L
1791486	325D, 330B, 330D L
1787288	330, 345C, 365B, 374D, 385C
1890475	345C, 350
1855065	375, 385C/B, 390D
1181611	955K, 951BC, D5
3T4352	D3, D3B/C/G, D4B/C/G
1181608	D4D, D6D
1248237	D4H, D5C/G/H/M/N

SINGLE FLANGE

Part No.	Application
1210824	D5B, D5H, D5N, D6, D6B
1181614	D6C, D6R, D6T
1181617	D6D
1205746	D6R
1P9100	D7E
1248250	D7F, D7R
6P4897	D8H, D8K
2460775	D8N
8P5605	D9G, D9H
6Y2950	D9L
1043495	D9R
1955855	D10T, D10R
4I7346	E110, E120B, 311/B, 312/B
965260	E180/B, E240
957138	E240
854973	E300B, EL300B
4I7346	E110, E120B, 311/B, 312/B
957138	E240
854973	E300B, EL300B



DOUBLE FLANGE



Part No.	Application	Part No.	Application
1791491	330B	1205766	D6H, D6R, D6T
3T4353	D3B/C/G, D4B/C	1P9102	D7E, 977L
3010650	D3K	1248253	D7F, D7R
1248240	D4C/D/E/H, D5G/K/M	6P4898	D8H/K, 583H/K, D8
1181609	D4E	2460779	D8N/R/T
1181612	D5, D5E	8P5604	D9G/H, 594H
1210827	D5B, D5H, D5N, D6, D6B	6Y2951	D9L
1181615	D6, 955	7T1253	D9N, D9R
1181618	D6D	1955856	D10N/R/T



MINI EXCAVATORS ROLLERS

Part No.	Type	Application	Part No.	Type	Application
3041890	T.F	279C, 289C, 299C	2657674	N/A	304C CR, 305C CR
2668793	C.F	302.5, 303, 303.5	2657675	N/A	304C CR, 305C CR
1857280	N/A	302.5, 303.5	3408957	C.F	304CR
1466064	S.F	302.5, 303.5	1273807	S.F	307, 307B, 308D
2668794	N/A	303.5CCR, 304E	2778576	N/A	307, 308, E70B
1721764	S.F	304.5, 305.5	1273806	S.F	315, 315B, E307

* S.F = Single Flange

* C.F = Center Flange

* Other part no. not included in the list are available. Please contact your sales representative. if you have any questions. Part Numbers are used for reference purposes only.

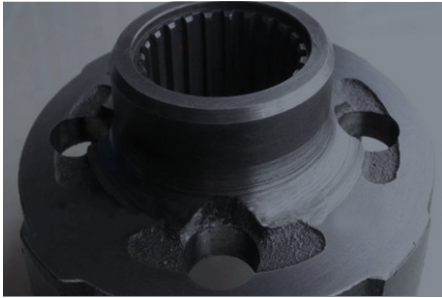


TOP ROLLERS



Part No.	Application	Part No.	Application
8E4576	229, 231, 235	3T3206	D6, 963
8E5600	315, 318B, 320E, E200B	6Y3908	D6M, D5H, 953C, 953B
6Y5323	320S, 325, 330	6Y1781	D6R, D6H, 963
3004610	345B, 330C	1P8717	D7E, D7F, D7G, D7H
3004611	365B, 365C	8P6256	D8, D8H, 245, 983
6Y8168	365B, 375, 375L	8E0400	D8R, D8N
6S3609	D3B/C, D4B/C	3P3403	D9, 594
5A8374	D5, 561	4I7345	E120B
6K9880	D5M, D4H, 939	1955856	D10N/R/T

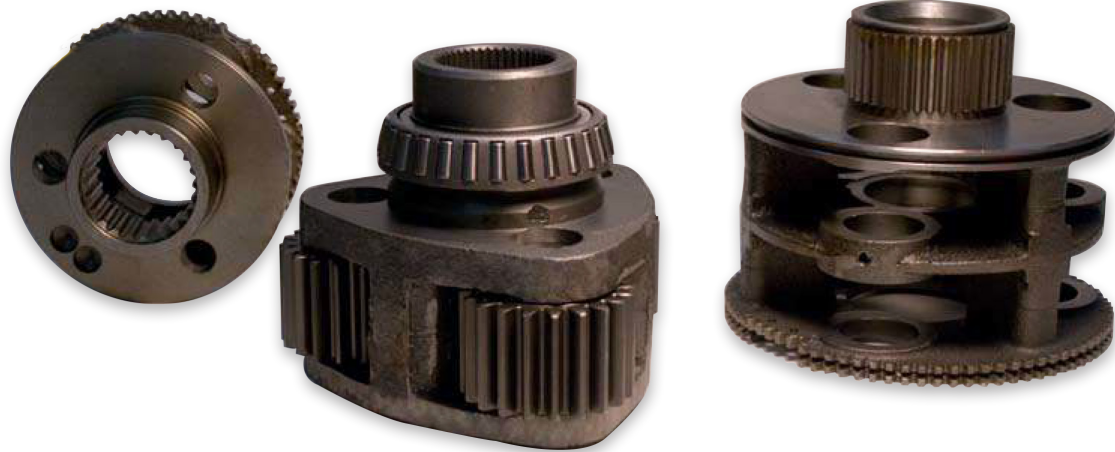
Powerful Hydraulic K-Track TRACK CARRIERS



FEATURE & BENEFITS

Our carriers are produced from quality cast iron and tempered to remove any stresses due to processing. K-TRACK Carriers are packaged in chemically treated paper or nylon bags to prevent corrosion during extended storage under unfavorable conditions.

PRODUCT



SPECIFICATION

Part No.	Application	Part No.	Application
1043133	D9N	2V5722	966DE, 966F
1107209	325B L	3P0306	12G, 120G, 140G
1107228	330B L	3P1609	14H, 16H, 14H, 14G
1107243	330B	3P2415	980F, 980C, 826C
1127304	980G	3P3103	988G, 980F, D9R
1127308	D9R	3P3775	D9N, D9L
1128041	966DE, 966F	3T3294	D10N, D10R
1128042	980F, D7R, D8N	3T4007	D6R, D7R, D8N
1293046	980G	3T5021	D6R, D7R, D8N
1294300	966G, 966H, 972G	3T5200	D8N, D6H, D7H
1864117	416B, 416C, 416	4E2166	938F/G
2105924	416E, 416D	4S5940	D5, 955K
1M4153	D8K, D9G/H	4S5980	N/A
1P9663	977K/L 983	4V8541	950B
1T0226	571A, 572E, D7E	4V9823	916, IT18B
1T1481	936E, 950B, 950E	5M7875	D6C, D6G, D7G
1V1409	910, 920	5S7023	D5, 955L
1V2281	950, 613B	5V6177	518, 936
1V3335	930	6C0739	215
2P4408	D4D, 920, 930	6G7213	120G, 120H



SPECIFICATION



Model	Part No.	Model	Part No.
6P0748	D4C, D3C, 926F	8E4024	D3C, 935C, 916
6S3011	910	8E4589	D4C, D3C, 926E
6T0275	926, 926E	8G6335	953
6T3726	D9T	8G7133	963B
6Y1336	D8N, D8R, D8T	8M8677	D6, D7, 977
6Y1604	980F, 980C, 826C	8R2198	928G
6Y4819	966D	8R4571	950, 950F
6Y4846	D7R, D8T	8R4821	980C, 980F
6Y7879	966	8S9070	D7F
7G4589	980F, 980C	8X2305	120H
7G5444	936, 936E	9C6027	814F, 815F, 966F
7G5445	962H, 962G	9D8794	773D, 775D
7G5684	D7H	9G1490	D5N, 561N, D5M
7G7218	980F	9G1491	962H, 962G
7I7728	322B, 325L	9G9175	D6H, D6R
7K1848	966	9K1759	966C
7T1124	D8L	9P3468	D8L, D9T, D9R
7T3365	D8N	9P3663	D8K, D9G, D9H
7T8170	D4H, D5C	9P3731	966D, 960F
7Y0228	322L	9P8451	140G, 160G
7Y0241	325	9R3527	426, 428
7Y0645	330	9S5267	D6C, D7G
7Y0731	330	9W0517	950B, 950F
7Y1432	320, 320B	9W4949	950B
7Y1433	318B	9W4957	936, 950B
7Y1751	320	9W6046	926, D5C
7Y1752	320B	9W9392	D8N, D9L
8D3591	315H, 140H, 130G, 140G	9W9396	D8N

* Other part no. not included in the list are available. Please contact your sales representative if you have any questions. Part Numbers are used for reference purposes only

Powerful Hydraulic K-Track TRACK LINK ASSEMBLY



FEATURE & BENEFITS

K-TRACK Link Assemblies and components are manufactured using reverse engineering to ensure compatibility. Designed to withstand heavy loads, K-TRACK links extend the life of your machine's undercarriage and help you minimize downtime.

PRODUCT



Designed to withstand heavy loads, extend the life of your machine's undercarriage and help you minimize downtime.



The track group with shoes is through quench-tempering processes to guarantee excellent mechanical properties.

SPECIFICATION

Model	Part No.	Sec.	Serial	Link LH	Link RH	Bushing	Pin	Mstr Link LH	Mstr Link RH
D4H	1080953	39	8PB	1080948	1080947	1080944	1080943	1080950	1080949
D7R	1156302	43	ABJ1	6I9240	6I9239	1154924	1154923	6I9242	6I9241
953/C	1543677	40	2ZN	7T4540	7T4539	7T4636	1607818	7T4542	7T4541
D9T,D9R	1995525	43	TWG1, ACL	7T2276	7T2275	1860781	1860780	2504246	2504245
D4H, 561H	2282744	44	7PK1, 4NK1	6Y9262	6Y9261	9W7939	6Y9474	6Y9264	6Y9263
D5K, D5K2	2890270	40	KWW1, TRF1, WT31	6Y9262	6Y9261	2243959	1607816	6Y9264	6Y9263
D3C	3238759	37	6SL1, 4KS1	6Y0936	6Y0935	1886246	3039455	6Y0938	6Y0937
311B	1624303	41	XEBP	4I7476	4I7475	6I6446	5I6140	4I7478	4I7477
312C/D/E, 314C/D/E	1764871	46	CBA1, JBC1, PCA1	4I7476	4I7475	1624304	1624305	4I7478	4I7477
D4D/E	1V7071	35	59J	9K6628	9K6629	9K4061	9K4060	1V4604	1V4603
941/B	1V7074	38	80H, 70H	9K6628	9K6629	9K4061	9K4060	1V4604	1V4603
D4D/E	1V7075	40	7R781, 52X	9K6628	9K6629	9K4061	9K4060	1V4604	1V4603
325D, 329D, 345C	2368893	50	KBE1, RSK1, DHP1	6Y1608	6Y1607	3211462	6Y0851	1151854	1151853
561, 951B/C	257579	40	N/A	255960	255959	8M7457	6B5502	255960	255959
D4K2, D3K2, D4K	3238755	43	MT31, KFF1, RT31	6Y0936	6Y0935	1886246	3039455	6Y0938	6Y0937
977L	3P0628	39	48J	8S2590	8S2589	3P0621	3P0622	2P9654	2P9653
211B, 215B/C	6T0511	51	4HG, 2XC1	9K6628	9K6629	9K4061	9K4060	9K6628	9K0029
215C, 219D, 225B/D	6Y8184	49	6RG, 3YD, 5CF	7T4044	7T4043	5S0710	6Y8186	N/A	N/A
D4D/E	7K2049	36	77W, 76W, 59J, 60J, 82J, 83J	7K1826	7K1825	7K2019	4B6166	7K1826	7K1825

* Other part no. not included in the list are available. Please contact your sales representative if you have any questions. Part Numbers are used for reference purposes only

SPECIFICATION

Model	Part No.	Sec.	Serial	Link LH	Link RH	Bushing	Pin	Mstr Link LH	Mstr Link RH
D6N, D6M, D5H	1061634	47	PBA, PER, 9ZM	1061626	1061625	1061618	1790126	1061628	1061627
D6N, D6M, D5H	1061636	46	ALR	1061626	1061625	1061618	1790126	1061628	1061627
D4H, 651N, D5N, 561M	1080954	44	7PK143, AKD1	1080948	1080947	1080944	1080943	1080950	1080949
D4H, D5N/M	1080955	41	8PJ	1080948	1080947	1080944	1080943	1080950	1080949
D5M	1080955	41	AGG	1651747	1651746	1651767	1528075	1080950	1080949
D6N, D6K, D6K2, D6M	1102976	40	PER1	1061626	1061625	1061618	1790126	1061628	1061627
D7E, D7R	1156301	40	TAN1-1199, ACS1	6I9240	6I9239	1154924	1154923	6I9242	6I9241
D7R	1156303	41	EN1	6I9240	6I9239	1154924	1154923	6I9244	6I9241
D4E	1543657	40	2DJ1400	9K6628	9K6629	7T4628	1543664	1V4604	1V4603
D5	1543672	39	N/A	N/A	N/A	N/A	N/A	N/A	N/A
N/A	1543676	46	N/A	N/A	N/A	N/A	N/A	N/A	N/A
312D2, 314E, 312E, 311D, 313D2	1764870	43	RXZ1	4I7476	4I7475	1624304	1624305	4I7478	4I7477
319D, 320E, 323D, 323D2, 318C	1941608	49	BZH	9W3138	9W3137	1903523	6Y8186	8E8586	8E8585
320B/C, 315C, 317C	1941608	49	ANB	9W3138	9W3137	1171372	6Y8186	8E8586	8E8585
320/B/C/D, 321C/D	1941609	45	2AS	9W3138	9W3137	1171372	6Y8186	8E8586	8E8585
320B, 318B, 315B, 317B	1941609	45	SXE/AWS	9W3138	9W3137	1903524	6Y8186	8E8586	8E8585
320B, 318B, 315B, 317B	1941609	45	2AS	9W3138	9W3137	1171371	1883064	8E8586	8E8585
320C, 318B, 317B	1941609	45	AMC	9W3138	9W3137	1590950	1883064	8E8586	8E8585
320C, 318B, 317B	1941609	45	N/A	9W3138	9W3137	1590950	6Y8186	8E8586	8E8585
322	1959343	47	DFP	9W3138	9W3137	1903523	6Y8186	8E8586	8E8585
322/B	1959343	47	8MR	9W3138	9W3137	1171372	6Y8186	8E8586	8E8585
322B, 330	1959344	51	1ZS	9W3138	9W3137	1171372	6Y8186	8E8586	8E8585
326D2, 326D, 324D, 345D, 322C	1959344	51	N/A	9W3138	9W3137	1903523	6Y8186	8E8586	8E8585
323D, 329D2, 329D, 320C, 325D	2019116	45	SED1	6Y1608	6Y1607	3211462	6Y0851	1151854	1151853
336D, 336D2, 312D, 330D, 330C	2019118	45	PGW1	6Y2590	6Y2589	3211463	6Y2751	1187303	1187302
336D, 336D2, 330D, 330C	2019119	49	WRK1	6Y2590	6Y2589	3211463	6Y2751	1187303	1187302
325C, 324D, 322C, 325B	2131932	48	S2C1	6Y1608	6Y1607	3211462	6Y0851	N/A	N/A
323E, 329D/D2/E	2131933	45	SHJ	6Y1608	6Y1607	3211462	6Y0851	N/A	N/A
D56 XL	2279976	39	FDH1	6Y9262	6Y9261	2243959	1607816	6Y9264	6Y9263
D5C, LPG	2279976	39	9DL1	6Y9262	6Y9261	9G8588	1607816	6Y9264	6Y9263
D7G, D7F	2392230	38	65V, 7MB	8S2590	8S2589	3P0621	3P0622	2P9654	2P9653
D7G2	2392230	38	C7G	2330386	2330385	2373790	1992794	2554792	2554791
D8N	2726010	44	N/A	8E4506	8E4505	6Y3914/ 7T6227	1992251	8E4060	8E4059
D8T, D8R, D8R	2726010	44	SII J8B, KPZ	8E4506	8E4505	6Y3914	1992794	8E4460	8E4059
D8T, D8R, D8R SII	2726010	44	KPZ	8E4514	8E4513	6Y0469	7T7054	8E4060	8E4059
349D2, 349F, 568, 345C, 349D	3012287	52	TAH1	3059364	3059363	2273029	8E4272	N/A	N/A
D3C	3238757	39	51H, 81H, 21J, 62J	3P7154	3P7153	5S0710	6B5502	3P3044	3P3043
D4E	1V4599	36	2DJ	9K6628	9K6629	7T4628	1543664	1V4604	1V4603
955L	1V7077	41	64J	3P7154	3P7153	5S0710	6B5502	3P3044	3P3043
D7G2, D7F, 572G, 571G	3P0955	38	C7G	8S2590	8S2589	1M3669	8E4272	2P9654	2P9653
D7E, D7F, D7G	3P0958	39	N/A	8S2590	8S2589	1M3669	8E4272	2P9654	2P9653
D6D, 955L, D6C	3P1088	36	10K, 26K, 24U, 74W	3P1113	3P1112	4M5991	4M5989	3P1115	3P1114

OTHER LINK ASSEMBLIES

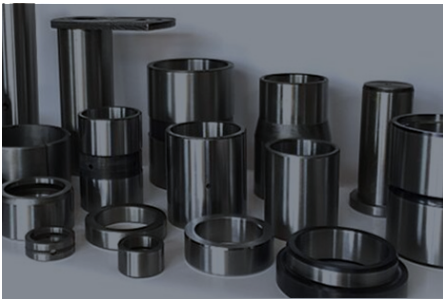
SPECIFICATION



Model	Part No.	Sec.	Serial	Link LH	Link RH	Bushing	Pin	Mstr Link LH	Mstr Link RH
D6D, 955L, D6C	3P1118	36	N/A	3P1113	3P1112	3P1109	3P1108	6Y6744	6Y6743
D6D	3P1120	39	2MJ2654	3P1113	3P1112	3P1109	3P1108	3P1115	3P1114
D6E, D6G	3P1120	39	8FJ1	3P1113	3P1112	3P1109	3P1108	6Y6744	6Y6743
D5B, 951C, D5, 561D	3P5757	39	21Y558	3P7154	3P7153	5S0710	6B5502	3P3044	3P3043
D5B, D5	3P5762	46	49X	3P7154	3P7153	5S0710	6B5502	3P3044	3P3043
D6D, D6C	3P5927	41	10K, 26K, 23U, 75W	3P1113	3P1112	4M5991	4M5989	3P1115	3P1114
D8L	6I8665	45	N/A	N/A	N/A	N/A	N/A	N/A	N/A
D6R	6I9668	39	GMT1	3788242	3788241	8E7222	1607820	8E7408	8E7407
D6H, D6R	6I9668	39	AFM1	3788242	3788241	8E7222	1607820	8E7408	8E7407
D6R, D6H	6I9670	40	9MN1	3788242	3788241	8E7222	1607820	8E7408	8E7407
D6T	6I9671	41	CG81, DTD1	3788242	3788241	8E7222	1607820	8E7408	8E7407
D6R, D6T, 527, D6H	6I9671	41	AAX1	3788242	3788241	8E7222	1607820	8E7408	8E7407
325	6Y0854	48	6RM, 8YK, 9SG	6Y1608	6Y1607	1790693	6Y0850	N/A	N/A
D7H	6Y1139	43	80Z4000	9G2418	9G2417	2373790	1992794	9G2420	9G2419
D7H	6Y1139	43	5WB1, 80Z1, 3XG5500	9G2418	9G2417	2373790	1992794	9G2420	9G2421
D7H	6Y1141	40	4AB05500	9G2418	9G2417	2373790	1992794	9G2420	9G2419
D3B, D3	6Y1711	36	N/A	6Y0936	6Y0935	6Y1717	6B5278	6Y0938	6Y0937
D3B	6Y1713	39	N/A	6Y0936	6Y0935	6Y1717	6B5278	6Y0938	6Y0937
D9L/N	6Y2887	47	14Y	7T7629	7T7630	6Y2141	6Y2146	N/A	N/A
D5H	6Y5412	37	8RC	6Y9268	6Y9267	6Y0929	1607818	8E0886	8E0885
D5H	6Y5414	46	1DD	6Y9268	6Y9267	6Y0929	1607818	8E0886	8E0885
D6T	8E9037	45	MEL1	3788242	3788241	8E7222	1607820	8E7408	8E7407
D6R, D6H	8E9037	45	S6Y1	3788242	3788241	8E7222	1607820	8E7408	8E7407
D8K, D8H, D8	8S0396	41	N/A	7S9182	7S9181	2900844	1M1455	7S9602	7S9601
D8H, D8K	9W8937	41	N/A	N/A	N/A	N/A	N/A	N/A	N/A

* Other part no. not included in the list are available. Please contact your sales representative. if you have any questions. Part Numbers are used for reference purposes only.

TRACK PIN & BUSHINGS



FEATURE & BENEFITS

K-TRACK Pin and Bushing are used for mechanical parts, in order to achieve sealing, wear protection and other functions of the accessories, refers to the role of gasket ring sleeve.

Special Features

- Manufactured from the highest quality alloy steel.
- Saving your cost.
- Full engineering support.

SPECIFICATION

PINS

Part No.	Description
1529735	PIN- TRACK
2P9486	PIN- TRACK
2814015	PIN- TRACK
1154923	PIN- TRACK
1265343	PIN- TRACK
1607816	PIN- TRACK
1607819	PIN- TRACK
1607820	PIN- TRACK
1860780	PIN- TRACK
1992794	PIN- TRACK
1995522	PIN- TRACK
3P0622	PIN- TRACK
6B5502	PIN- TRACK
6Y0851	PIN- TRACK
6Y2748	PIN- TRACK
6Y2751	PIN- TRACK
6Y8186	PIN- TRACK
8E4272	PIN- TRACK
9K4060	PIN- TRACK
9W5588	PIN- TRACK
4M5989	PIN- TRACK
1883064	PIN-TRACK MASTER
1883065	PIN-TRACK MASTER
1883066	PIN-TRACK MASTER
4K3919	PIN-TRACK MASTER
6Y0850	PIN-TRACK MASTER
8M7456	PIN-TRACK MASTER
9K4062	PIN-TRACK MASTER
8M7288	PIN-TRACK MASTER
990653	PIN-TRACK MASTER

SPECIFICATION

BUSHINGS

Part No.	Description
1154924	BUSHING-TRACK
1171371	BUSHING-TRACK
1903523	BUSHING-MASTER
3P1109	BUSHING-MASTER
3P1109	BUSHING-MASTER
4M5991	BUSHING-MASTER
5S0710	BUSHING-MASTER
8M7457	BUSHING-MASTER
1903524	BUSHING-MASTER
1903524	BUSHING-MASTER
1M3670	BUSHING-MASTER
1M3670	BUSHING-MASTER
4M5992	MASTER BUSHING

* Other part no. not included in the list are available. Please contact your sales representative.

* If you have any questions. Part Numbers are used for reference purposes only.



SPECIFICATION

LINKS

Part No.	Description
9W3138	LINK LH
1171371	LINK RH
8E8586	LINK-MASTER LH
8E8585	LINK-MASTER RH

TRACK SPROCKETS AND SEGMENTS



FEATURE & BENEFITS

K-TRACK Sprockets are manufactured out of premium cast steel, while our segmented sprockets are forged out of high quality steel. Both offer advanced heat treatment technology to provide the highest resistance and durability even under the most brutal working environments.

Special Features

- Forged and subsequently processed
- Extensive quality checks.

PRODUCT



SPECIFICATION

Part No.	Application
3T9154	215
7T1311	235
8E6974	250
1028134	315
6Y4898	325
6Y5685	330
8E4686	375
3T9152	215, 225
6C3495	215B
1243296	345B
1419655	365B/C 345B 374D
4V5374	951C
4V5376	951C
6Y1244	D3

SPROCKETS AND SEGMENTS

Part No.	Application
8Y0622	D3C
5H9107	D4, 955C
4V4106	D4D, D4E, 941, 941B
4V4107	D4D, D4E, 941, 941B
5S4822	D5
5I9336	D9
990219	E120B
964327	E200B
4I7472	E311, E110B, E312
8E9805	E320
962144	E70B
1R5440	E70B
959779	EL240B
994129	EL300

* Other part no. not included in the list are available. Please contact your sales representative if you have any questions. Part Numbers are used for reference purposes only



SPECIFICATION



Part No.	Application	No. of Pieces
6Y3242	953C	9
6K1430	955K, 955L	8
6T9538	D10R	5
6Y2047	D3C, D4C	5
7G0841	D4H	5
5S0836	D5B	9
8E7298	D5G	5
3145464	D5H	5
5S0050	D6C, D6D, D6	5
7G7212	D6H	5
6I8078	D6M	5
3P1039	D7E/F/G, 977L	5
9P1898	D7H	5
2P9510	D8H, D8K	9
9P4747	D8L	3
9W0074	D8N, D7H	5
2P9448	D9G, D9H	9
7T1246	D9N	5
3T9049	DC51 A	5

SPECIFICATION

MINI EXCAVATORS

Part No.	No. of Pieces
6Y3242	9
6K1430	8
6T9538	5
6Y2047	5
7G0841	5
2P9448	9
7T1246	5
3T9049	5

Powerful Hydraulic K-Track TRACK IDLERS



FEATURE & BENEFITS

K-TRACK offers idlers that are made of premium quality cast steel. Using state of the art technology, idlers undergo a special heat treatment that provides them with long durability and smoothness.

Special Features

- Strong construction
- Supreme finish
- Accurate dimension

PRODUCT



High strength and superior wear resistance to bending and breakage.



Quench-tempering processes to guarantee genuine mechanical properties, Precise design and carefully manufactured.



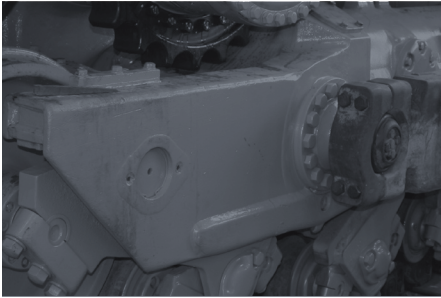
SPECIFICATION



Part No.	Description	Application	Part No.	Description	Application
CR4094	IDLER	D6D	2024303	IDLER AS	D6R, D6T
CR4095	FRONT IDLER GPW/ BRACKETS	D7E/F/G/H	2024304	IDLER GP-TRACK	D6R, D6H
941384	IDLER WHEEL	E240B	2487143	IDLER GP-TRACK	320C, 315C
1M8867	IDLER A-FRONT	D4, D4C/D, 933F, 955	3V5131	IDLER AS-FRONT	215 SA, 225B
1028152	IDLER G-FRONT	330	4E8500	IDLER GRW/ BRACKETS	235C, 235D
1028155	IDLER G-FRONT	325, 325L	4I7337	IDLER GP-FRONT	E311, E110B, E312
1111729	IDLER GP-TRACK	D8N	5C9558	IDLER GP-FRONT	215B SA, 225
1111730	IDLER GP-FRONT	D8N	5M5009	IDLER A-TRACK	D6C
1156366	IDLER G-FRONT	345/B/C	8E8907	IDLER AS	215B, 225
1253537	IDLER A-TRACK	D10, D10R	9H8489	IDLER SHELL	D7, 973
1254655	IDLER GP-TRACK	D9N	9S7221	IDLER SHELL	D8H
1514587	IDLER GP-TRACK	D6H			
1592086	IDLER GP-TRACK	D7H, D7R			
1846590	IDLER GP-TRACK	D3G			
1901534	IDLER GP-TRACK	D4H			
1901546	IDLER GP-TRACK	D5H			
1901551	IDLER GP-TRACK	D4H			
1920224	IDLER GP-TRACK	D7R, D7H			
2024296	IDLER GP-TRACK	D6R			

* Other part no. not included in the list are available. Please contact your sales representative if you have any questions. Part Numbers are used for reference purposes only

Powerful Hydraulic K-Engine TRACK BOGIES



FEATURE & BENEFITS

K-TRACK Bogies are designed to offer top class quality suspension, stability, and safety.

Special Features

- Powerful bogie designed for lifting super heavy loads
- Strongest lifting beam to support the heaviest loads
- Safety hydraulic brake system

PRODUCT



BOGIE MAJOR



BOGIE MINOR

SPECIFICATION



Part No.	Bin Loc	Descrip-tion	Qty. Per Machin
8E4236	D8L, 578	MIDDLE	4
8E4235		FRONT	2
8E4237		REAR	2
3102866	D8N, D8R, D8T	MIDDLE	4
3102901		FRONT	2
3102902		REAR	2
9W0683	D9L	MIDDLE	4
9W7612		FRONT	2
9W7613		REAR	2
7T0375	D9L, D10N, D10R, D10T	MIDDLE	4
1284414		FRONT	2
1268588		REAR	2
7T5417	D9N, D9R, D9T	MIDDLE	4
1342679		FRONT	2
1342680		REAR	2

Part No.	Machine Model	Descrip-tion
-	D10R	BOGIE MINOR RH
-	D10R	BOGIE MINOR LH
-	D9R	BOGIE MINOR RH
-	D9R	BOGIE MINOR LH
-	D11R, D11T	BOGIE MINOR
-	D11R, D11T	BOGIE MINOR
-	D11R, D11T	BOGIE MINOR LH

* Other part no. not included in the list are available. Please contact your sales representative if you have any questions. Part Numbers are used for reference purposes only

Powerful Hydraulic K-Track TRACK EQUALIZER BARS



FEATURE & BENEFITS

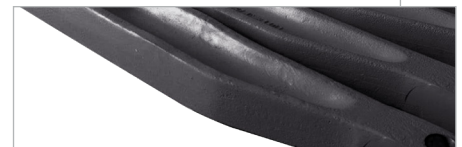
K-TRACK offers Equalizer bars that are made of premium quality cast steel. Using state of the art technology, Equalizer bars undergo a special heat treatment that provides them with long durability and smoothness.

- Made with the toughest steel available in the industry.
- Complete with fittings.

PRODUCT



An equalizer bar itself serving as a suspension device of a track-type vehicle has spring effects imparted through torsional deformation relative to vertical oscillatory movements of track frames.



Free end portions of the arm portions are individually supported in the track frames to be rotatable in directions opposite to each other.

SPECIFICATION

Part No.	Application	Part No.	Application
1409698	D8N, D8R	6T1724	D6E
1409699	D8L, D9R, D9N	7M0665	D6
1414690	D7H	7S9088	D8, D8H
1774651	D9K	8E0743	D5H-LGP
2012076	D6H, D6R	8E1340	D5H
2012078	D6H-LGP	8E8789	D6M
2072683	D11R	8G4375	953-LGP
2072684	D11R, D11T	8P1865	D7E, D7F
2223676	D9, D10N	REMARK	-

* Other part no. not included in the list are available. Please contact your sales representative if you have any questions. Part Numbers are used for reference purposes only

TRACK ADJUSTER RECOIL SPRING



FEATURE & BENEFITS

K-TRACK Adjuster Recoil Springs are the most critical and hardest working components of a tractor undercarriage system. Recoil springs must constantly maintain the proper track tension, to avoid premature wear and extend the life expectancy of the track and idler systems.

Special Features

- Made with the toughest steel available in the industry.
- Complete with fittings.

PRODUCT



SPECIFICATION

Part No.	Application
9V9408	225, 235
1017880	232, 322BL, 322C, 322L, 325BL, 325C
7V1111	235, 235B, 235C
8K2082	235, 235D
8K4102	235C, 235D, 245, 245B
1686690	311C, 312C, 314C
2394376	311C, 312C, 314C
2487194	311D, 312E, 314E
1028139	312, 315, 317
1880904	312C, 312CL
1792993	315C
2394377	315C
2394350	315D
1453036	318C
7Y1606	320, 320L, E200

SPRING RECOIL

Part No.	Application
7Y0631	320, 325, 325L
1156427	320B, 320B L
1941231	320C, 321C
1793004	320C, 322C, 325C
2394339	320C, 325C
717717	322, 322B, 322L
1764882	322C
2394358	322C
2394369	324D, 324E, 326D
1941244	324D, 325D, 329D
1941220	325C, 330C
417401	330, 330L
1309295	330BL, 330C, 350, 350L, 532, 541
1793035	330C
-	-

Powerful Hydraulic K-Track

TRACK ADJUSTER RECOIL SPRING

SPECIFICATION

Part No.	Application
2154119	330C, 330DL
2394323	330D, 336E
1941253	336D, 340F, 521B
1156368	345B, 330C
7Y1874	350, 350L
5K2754	933, 941B, D4, D4D
8Y2735	933, D3C, D4G
7K0639	941, 941B, D4, D4D
5K6262	955, 955K
1V7785	955L, 955K
2S7567	977, 977K, 46H, 76H
2V7439	D4E
2V7440	D4E
2V7441	D4E

SPRING RECOIL

Part No.	Application
2V9035	D5, D5B, 951B
3P1465	D5, D5D, D6B
8Y6659	D5C, 939, 939C, D5
8G4958	D5H
3P1459	D6, D6C, D7E
2261340	D6RII, D6T
5H9474	D7, D8
3P1885	D7E
2P9666	D8, D8H
2P9665	D8H, D8K, 583H, 594
7T4616	D8N, D8R, D8T, 583, 587R
3P4434	D9E, D9H, 594, 594H, 943, 953, 953C
0990166	E120B, 311B, 313B
0964269	E200B, EL200B

* Other part no. not included in the list are available. Please contact your sales representative if you have any questions. Part Numbers are used for reference purposes only



Powerful Hydraulic K-Engine TRACK ADJUSTER



FEATURE & BENEFITS

K TRACK offers premium performance track adjusters that will ensure optimum shock absorbance and will provide proper tension.

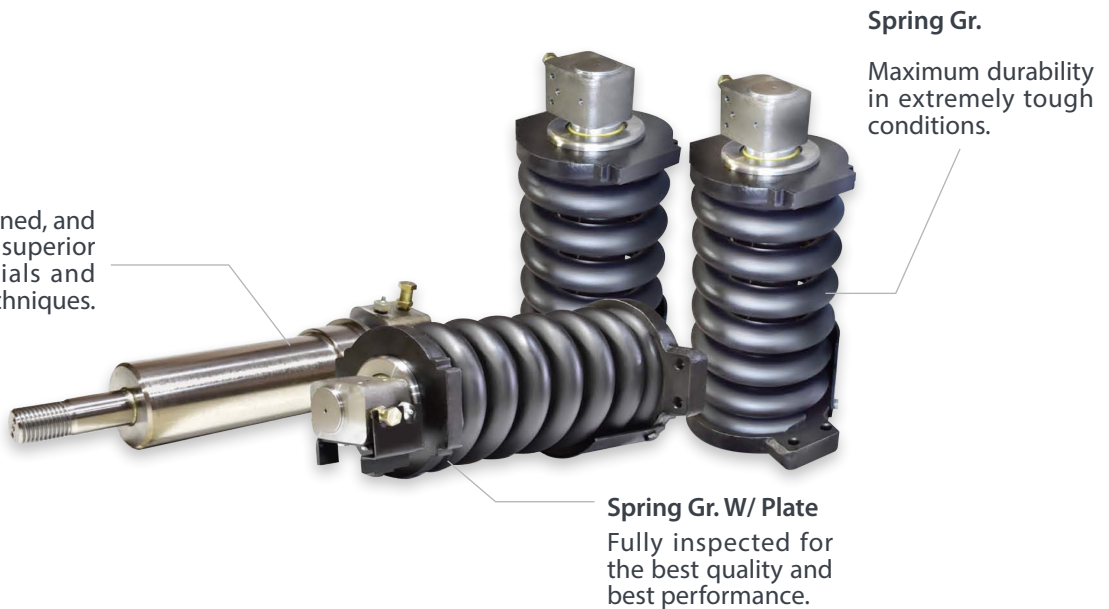
Special Features

- Reduces the risk of compressing and releasing the spring.
- Easy to change, even at a construction site.
- Extremely minimized down time.
- Saves time and money.

PRODUCT

Adjuster As.

Researched, designed, and developed using superior durability materials and state of the art techniques.



Spring Gr.

Maximum durability in extremely tough conditions.

Spring Gr. W/ Plate

Fully inspected for the best quality and best performance.

SPECIFICATION



Application	Adjuster As.	Spring Gr.	Spring Gr. W/ Plate	
			LH	RH
320, 320-L, 320-N	1028165	7Y1602	-	-
330B, 330B-L	7Y1457	7Y0773	-	-
330B, 330B-L	2979143	2979142	-	-
319D, 319D-L, 319D-LN	2394390	2394389	2394388	2394387
320D, 320D-L, 323D-L	2394390	2394389	2394388	2394387
318C, 320C, 320C-L, 321C	1941257	1941229	-	1941260
320C, 325C, 320C-L	-	1792997	-	-
318C, 319C, 320C, 321C	1453029	1453028	1453039	-
320, 320 325/B/L	-	1309292	-	-
320, 320 L, 320N	1225136	1225135	-	-
318B, 320B, 320B-L, 320B-N	1156425	1156424	1156423	1156422
330C, 345B	-	1156365	-	-
322, 322B L	1028167	-	-	-

* Other part no. not included in the list are available. Please contact your sales representative. if you have any questions. Part Numbers are used for reference purposes only.

Powerful Hydraulic K-Track TRACK ADJUSTER



SPECIFICATION

Application	Adjuster As. W/ Plate Warning	Spring Gp.
311, 311B, 321, 312B, 312B L, 313B	417338	417342
320B S, 320 N, 322 L, 325, 325B L, 325, 325B L, 325 L, 325LN	7Y0720, 7Y0721	1309292
322C, 323D S, 324D FM, 324D FMLL, 325, 325C	1792998, 2979150	1792997, 1941242
325C L, 325D, 325D L, 329D, 329D L	1792998, 2979150	1792997, 1941242
330, 330B L, 330B LN, 330 L, 330 LN	7Y1457	7Y0773
330B L, 330C, 330D, 330D MH, 330 L, 345B, 345B II, TK1051	2979152	1156365
345B L, 345C, 345C L, 345D L, 350/L, 532, 541, 551, 552	2979152	1156365
TK741, TK751, TK752	2979152	1156365
320B S, 320B LL, 322B L/C/L, 324D FM, 325/B/B L	1028109	1309292
511, 522, 541, TK711, TK722	1028109	1309292
325D, 325D L, 325D FMLL, 328D LCR	1793043	1793033
330C/C L, 330D/D L, 336D / D L	1793043	1793033

SPECIFICATION

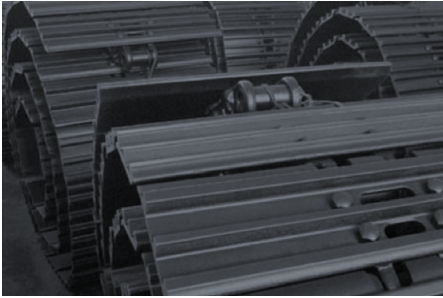
OTHER AVAILABLE PART NO.

Part No.	Application
1309332	312B, 315B, 330
1028114	320B S, 320 N, 322 L, 325, 325B L, 325
1028114	325B L, 325 L, 325LN
1028117	312, 315, 315L, 317
7G5526	D6H, D6H LGP
1686684	311C, 312C, 314C
2394373	324D/E, 326D/F
1941127	322C, 322C L
2979151	322C, 325C/D, 328D, 329D, 330C/D, 335F, 336D/E/F, 340F
7Y1458	330, 330L

* Other part no. not included in the list are available. Please contact your sales representative. if you have any questions. Part Numbers are used for reference purposes only.



Powerful Hydraulic K-Engine TRACK SHOES



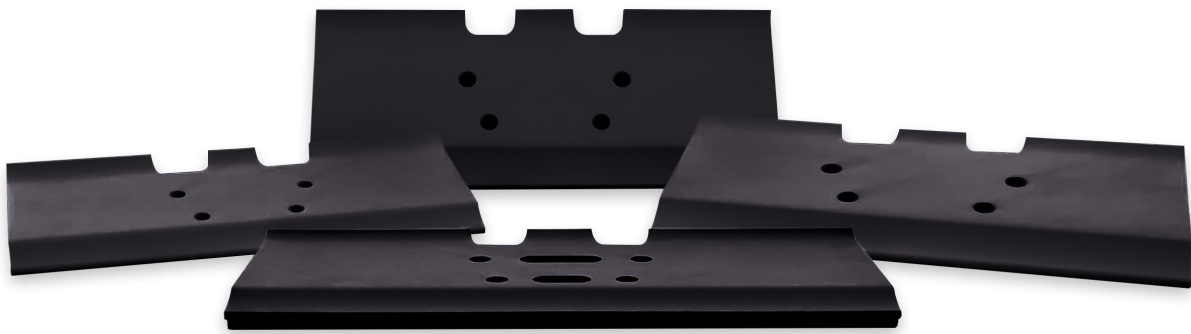
FEATURE & BENEFITS

Provide better traction and stability to your machine with K TRACK Track Shoes and Shoe Grousers.

Special Features

- The grouser and plate portions of this shoe are thicker and stronger, which provides a higher bending and wear resistance.
- Designed to operate easily and smoothly on the asphalt and other paved or cement surfaces.

PRODUCT



SPECIFICATION



Part No.	Description	Application	Part No.	Description	Application
1265062	SHOE-TRACK 600 MM	315,317,318	6Y6291	SHOE-GROUSER 20"	D6D, D6E
1265062	SHOE-TRACK 600 MM	319,320,321,323	6Y6291	SHOE-GROUSER 20"	D6G, D6H
6Y6394	SHOE-MASTER 20"	D6D, D6E, D6H, D6R	6Y6293	SHOE-TRACK 22"	D6D, D6E, D6F
1265064	SHOE-TRACK 600 MM	325,329D,330F	6Y6295	SHOE-TRACK 24"	D6D, D6E
6Y6294	SHOE-MASTER 22"	D6R, D6T	6Y6295	SHOE-TRACK 24"	D6F, D6F
1265066	SHOE-TRACK 600 MM	330D,335F,336D/F	7T2392	SHOE-TRACK 24"	D8R, D8T
6Y2126	SHOE-TRACK	325D,329D,330F	1265067	SHOE-TRACK TRIPLE 750 MM	330/B/C
6Y6286	SHOE-TRACK	D6H, D6R, D6T	6Y6395	SHOE-TRACK 20"	D6D, D6E
1P9808	SHOE-TRACK 22"	D7F, D7G	6Y6411	SHOE-TRACK 22"	D6D, D6E, 963K
3P0616	SHOE-MASTER 22"	D7G, 571G	6Y8180	SHOE-TRACK 850 MM	335F, 336F
3P0617	SHOE-MASTER 24"	D7G, 571G, 572G	6Y8180	SHOE-TRACK 850 MM	330C, 340F
5S0821	SHOE-TRACK 18"	D5B, 561C	7G6448	SHOE-TRACK	D8N, D8R, D8T
5S0822	SHOE-TRACK 20"	D5B, 561C	8E9812	SHOE-TRACK	D5C, D5G
6I9454	SHOE-TRACK 700 MM	320D, 323D	8E9812	SHOE-TRACK	D5M, D5N
6I9454	SHOE-TRACK 700 MM	324D, 330F	9W9351	SHOE-TRACK 800 MM	320C, 323D
6Y6286	SHOE-TRACK	D6R, D6T	9W9351	SHOE-TRACK 800 MM	324D, 329D
6Y6287	SHOE-TRACK	D6H, D6R, D6T	REMARK	-	-

Powerful Hydraulic K-Track

TRACK PINS & RETAINERS FOR GET'S



FEATURE & BENEFITS

K-TRACK Pins and retainers are made with the toughest materials in the market. To improve on the longevity and prevent corrosion, our pins and retainers are zinc plated.

Special Features

- Easy to change, even at a construction site.
- Extremely minimized down time.

PRODUCT



SPECIFICATION

REFERENCE CHART

Family	Pocket size	Machine
J200	20 = 2.0"	416, 426, 428, 436, 910, 931, 935, 307, IT12, IT14G
J250	25 = 2.5"	916-930, 936, 941, 943, 951, 953, 205 THRU 214, 225, 229, 311, 312, 320
J300	30 = 3.0"	950, 953B THRU 966, E180, 215, 235, 205 THRU 214, 315, 320, 322
J350	35 = 3.5"	966B, 977, 980, E180, E240, 213B, 215 THRU 229, 320, 322, 325, 330
J400	40 = 4.0"	980G, 322, 325, 330
J450	45 = 4.5"	983, 988, 988B, 225, 229, E300, 235, 325, 330, 345, 350
J460	46 = 4.6"	988F, 988B, 322B, 325B, 330B, 235D, 235L
J550	55 = 5.5"	988G, 992, 235, 245, 345, 350, 375
J600	60 = 6.0"	365B, 385C, 374D, 365C, 345C, 375, 375L
J700	70 = 7.0"	992C, 992D
J800	80 = 8.0"	994

SPECIFICATION

PINS FOR RIPPER PROTECTORS

Pin Part	Retainer Part	Application
1029062	-	325D
2755982	-	329D
4T2479	-	D8K, D9N
6J8811	-	D8N, D9N
6Y3394	8E4743	375, D8N, D9R

*For Reference: 3.0" = J300 Family - 5.5" = J550 Family. The last three digits of the tip describe the family.



SPECIFICATION



Pin Part	Retainer Part	Tip Size
1073308	8E6259	J300
1073378	1078559	J550
1122490	N/A	N/A
1134708	1134709	J700
1139608	1139609	J600
1140358	1140359	J400
1140468	1073469	J460
1167408	1167409	J400
1324762	1330699	J225
1324763	1495733	J250
1324766	1495733	J300
1341808	1341809	J800
1359292	1140359	N/A
1359350	1140359	N/A
1368308	1U2405	N/A
2011238	2011239	N/A
1U1558	8E5559	J550
6Y1204	6Y1202	J500
6Y2527	8E6359	J450
6Y3909	4T4707	J500
7T3408	8E8409	J400
8E6208	8E6209	J200
8E6258	8E6259	J250
8E6358	8E6359	J350

* Other part no. not included in the list are available. Please contact your sales representative, if you have any questions. Part Numbers are used for reference purposes only.

Powerful Hydraulic K-Track

TRACK RIMS AND WHEELS



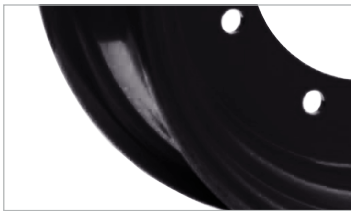
FEATURE & BENEFITS

Provide better traction and stability to your machine with K TRACK Track Shoes and Shoe Grousers.

Special Features

- Easier to change parts out.
- wheels and brakes last longer longer and are less expensive to replace.
- Easy to change, even at a construction site.

PRODUCT



Wheels a lot less damage, is easier to change parts out, and the wheels and brakes last longer and are less expensive to replace.



SPECIFICATION

RIMS

Rim Assembly	Machine	Seal	Ring Lock	Flange	Rim Group
6S4848	910	4K4879	7K3658	8W9591	N/A
7K8758	920	4K4879	4K4881	8W9594	N/A
7V5177	920	2D2565	2D2566	2D2567	7V5178
7V5210	930	2D2565	2D2654	8W9566	N/A
6C0898	936	4K4879	4K4881	8W9576	N/A
4K5851	950	2D2443	2D5272	N/A	1V7445
4K4909	950	4K4879	4K4881	4K4907	4K4908
1842309	120G, 130G	2D2565	2D2654	8W9566	9D5900
8X1160	120H, 135H, 140H	N/A	N/A	N/A	N/A
1233420	12H, 120H	N/A	N/A	N/A	N/A
6G1528	12H, 120H, 140G	4K4879	4K4881	8W9594	N/A
2520098	12H, 12M, 120M, 140M	N/A	N/A	N/A	N/A
N/A	12H, 14H, 16H	4K4879	4K4881	N/A	1426232
2901505	12M, 120M, 140M	N/A	2D2654	8W9566	2901505
2520100	12M, 120M, 160M	N/A	N/A	N/A	N/A
2G5744	130G, 140G	2D2565	2D2566	8W9587	5T8234
6G1527	140M, 160M	N/A	4K4881	8W9582	N/A
1850050	14H	2D2565	2D2654	8W9566	N/A
2899726	160M	N/A	4K4881	8W9594	N/A
1635709	725, 730	N/A	7D7469	1J8387	1635709
2248809	725, 730	N/A	7D7469	2087472	N/A

SPECIFICATION

RIMS CONT.

Rim Assembly	Machine	Seal	Ring Lock	Flange	Rim Group
1396938	740, D350E	N/A	7D7469	5K4865	N/A
1155172	824G, 980G	2D2443	7D7469	4F8925	N/A
3304103	824G, 980G/K	2D2443	7D7469	5K4865	1104603
7K3913	910, 920	4K4879	7K3658	8W9591	1V7344
8R5825	924G, 930G	N/A	N/A	N/A	N/A
2531691	924H, 928H	N/A	4K4881	1718689	N/A
4V2135	926E/F	4K4879	4K4881	8W9594	4V2135
1022131	928G, 930G	4K4879	4K4881	8X9925	N/A
8R3223	928G, 930G	N/A	4K4881	8W9576	N/A
9K5780	930T	4K4879	4K4881	8W9594	N/A
2522161	938G, IT38G	N/A	4K4881	1718689	2522161
1026222	938G/F	4K4879	4K4881	8W9576	1197454
2707829	938H	N/A	4K4881	1718689	N/A
5V2937	950B	3D2824	4K4881	8W9604	N/A
5C9287	950E/B	2D2443	2D5272	1J8387	N/A
2069271	950G, 962H	2D2443	7D7469	2087472	2069278
8R1465	950G, 966G/H, 972G	N/A	7D7469	4F8925	N/A
1312778	950G/H, 962G	N/A	7D7469	1J8387	N/A
3V4404	966C/R	2D2443	2D5272	1J8387	N/A
2069272	966H, 972H	2D2443	7D7469	2087473	N/A
6W4536	980C, 980F	2D2443	7D7469	4F8925	N/A
8V3550	980C, 980F	2D2443	7D7469	5K4865	N/A
1104604	980G, 980H	2D2443	7D7469	5K4865	1104604

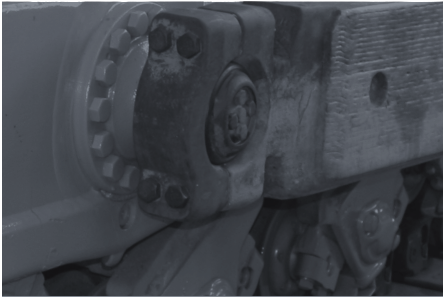
SPECIFICATION

BACKHOE WHEELS

Part No.	Description	Machine
1124411	REAR	416B, 420D, 426C
1350786	FRONT	416C, 416D
1956341	FRONT	416E, 420E, 430E
1956344	REAR	416E, 420E, 430E
1956345	REAR RH	428F, 432F, 442E
1956348	REAR	422E, 424B, 428E
2026186	FRONT	432E, 420F
2713042	REAR	420D, 424D
2713050	REAR	424D, 428D
4626421	REAR	428F, 432F, 434E
9R0315	FRONT	416, 428
9R1572	FRONT	428C

* Other part no. not included in the list are available. Please contact your sales representative. if you have any questions. Part Numbers are used for reference purposes only.

Powerful Hydraulic K-Track TRACK PIVOT PINS



FEATURE & BENEFITS

K-TRACK Pivot Pins are manufactured with the toughest materials available in the industry to prolong its wear resistance.

Special Features

- Rugged construction.
- Resistant to rust.
- Can withstand high impact.

PRODUCT



It is designed in detail to match the shape of the track so that it will not be released by external shocks.



It is made of hard material that does not break easily and is highly abrasion resistant to wear.

SPECIFICATION

Part No.	Machine
1598125	D8R
2519832	D6R, D6R-III, D6T
6Y7471	D6H, D6H XR, D6R
6Y7474	D7R, D7H, D7H LGP
8E6220	D5H, 527
8E6442	D8N, D8R
9W8888	D6H

*Please contact your sales representative if you have any questions. Part Numbers are used for reference purposes only.

