

SUPERIOR PERFORMANCE HYDRAULIC CRANE

STICK BOOM CRANE | KNUCKLE BOOM CRANE | AERIAL WORKING PLATFORMS



K KOREA
CRANE

Absolutely Powerful

STICK BOOM CRANE KSB3200

FEATURE & BENEFITS

- Excellent performance of Stick Boom Crane
- Strong material
- Powerful rectangle boom design

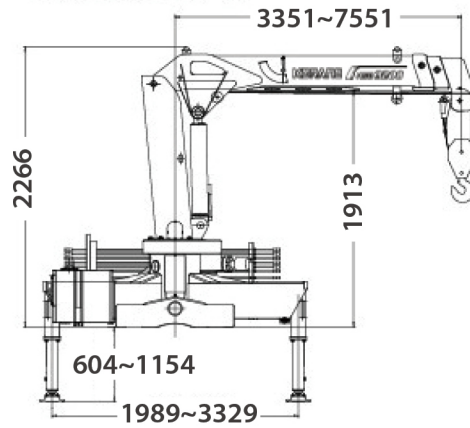


TECHNICAL SPECIFICATION

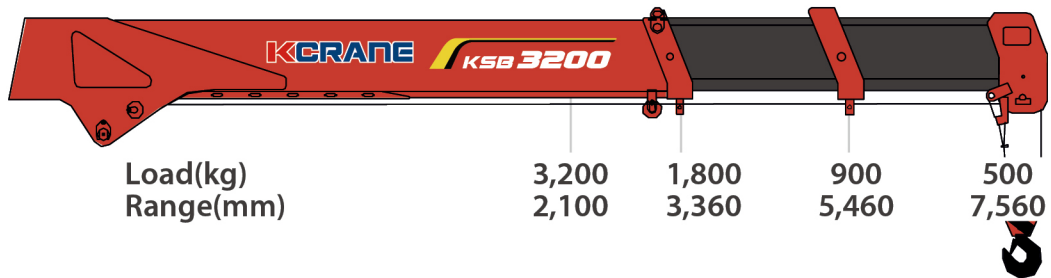
Model	Unit	KSB3200
Max Lifting Capacity	ton	3.2t
Max Lifting height	m	8
Max working radius	m	7.56
Max lifting moment	Kn.m	67
Boom sections	stages	2
Slewing angle	°	360 All Rotation
Boom raising angle	°	0 ~ 75
outrigger span	mm	1,989~3,329
Installation space	mm	850
Rated oil flow	L/min	25
Working pressure	Mpa	20
Recommended oil tank capacity	L	30
Crane Weight	kg	1,229

STICK BOOM CRANE KSB3200

EXTERIOR DRAWING



WORKING RANGE



BOOM SECTION 2

ADDITIONAL OPTIONS

- Allows to remotely control the crane.
- Provides the best-possible overview of the loading process and ensures higher efficiency in use.



REMOTE CONTROL

STICK BOOM CRANE KSB5000

FEATURE & BENEFITS

- Excellent performance of Stick Boom Crane
- Strong material
- Powerful rectangle boom design

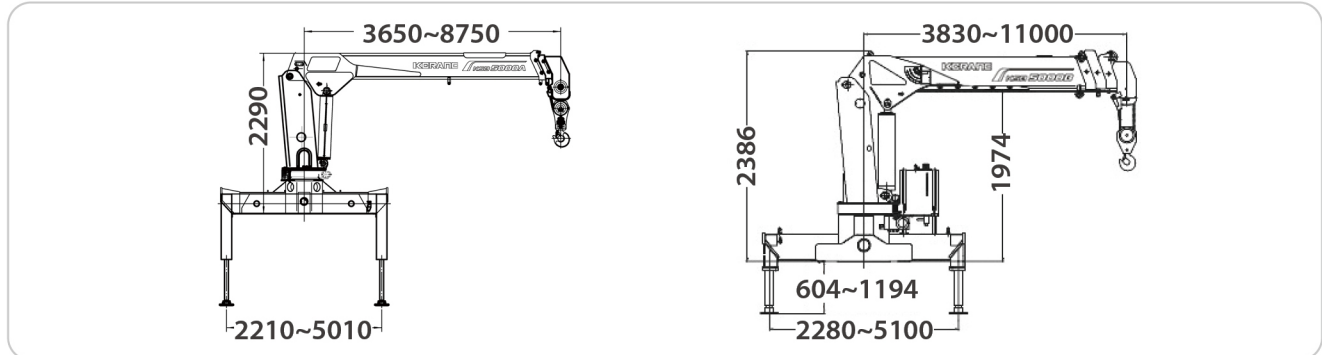


TECHNICAL SPECIFICATION

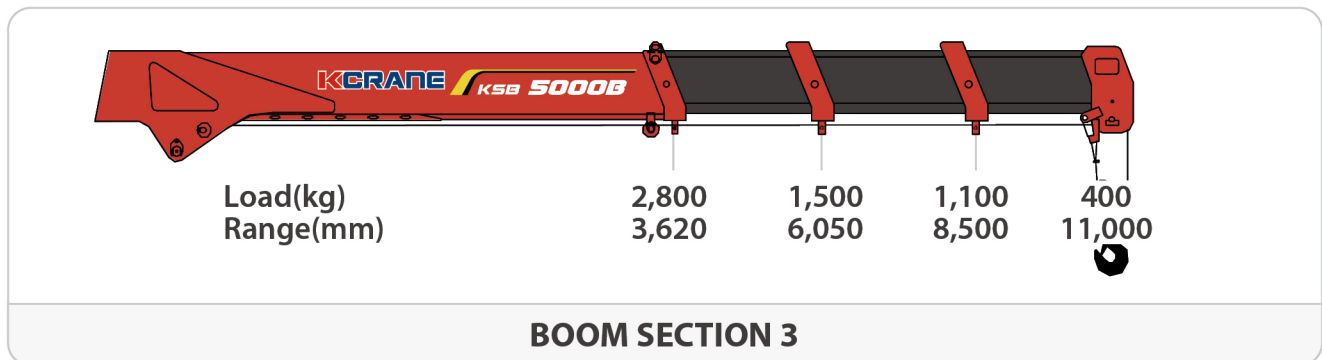
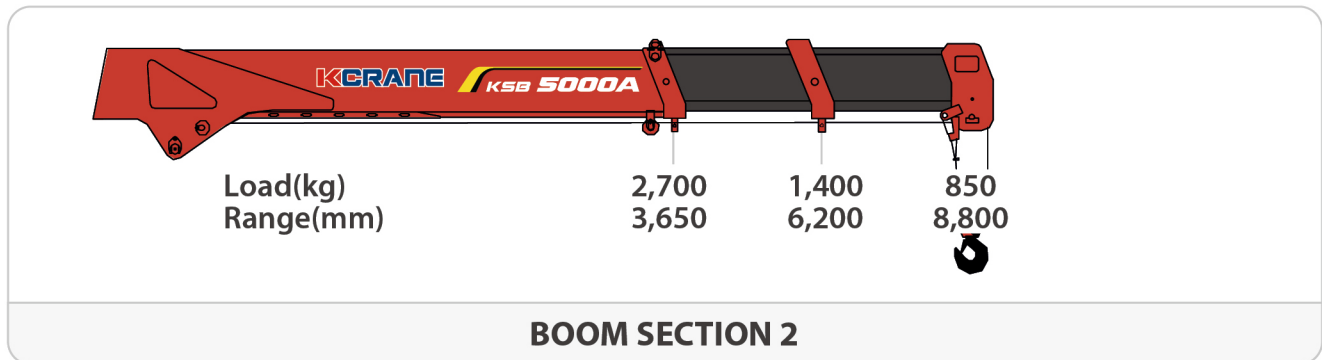
Model	Unit	KSB5000A	KSB5000B
Max Lifting Capacity	ton	5t	5t
Max Lifting height	m	11	13
Max working radius	m	9.4	11
Max lifting moment	Kn.m	125	105
Boom sections	stages	2	3
Slewing angle	°	360 All Rotation	360 All Rotation
Boom raising angle	°	0 ~ 75	0 ~ 75
outrigger span	mm	2,215~5,015	2,280~5,200
Installation space	mm	950	1,050
Rated oil flow	L/min	50	25
Working pressure	Mpa	16	28
Recommended oil tank capacity	L	120	90
Crane Weight	kg	2,300	2,117

STICK BOOM CRANE KSB5000

EXTERIOR DRAWING



WORKING RANGE



ADDITIONAL OPTIONS



REMOTE CONTROL



AUGER

Model	Unit	KEA7000
Part No.	-	107000
Carrier	T	7~10
Max Torque	N.m	6,931
Pressure	Bar	240
Oil Flow Range	l/min	61~121
Rotary Speed	rpm	37~72
Hydraulic Hose	Inch	3/4
Output Shaft	mm	ø75
Unit Weight	Kg	130
Unit Height	mm	850
Unit Max.Dia.	mm	269
Auger Series	mm	55
Auger Length	mm	1,500
Drill Dia. Range	mm	150~900
Application Model	-	KSB5000A, KSB5000B, KSB6300, KSB8000

STICK BOOM CRANE KSB6300

FEATURE & BENEFITS

- Excellent performance of Stick Boom Crane
- Strong material
- Powerful rectangle boom design

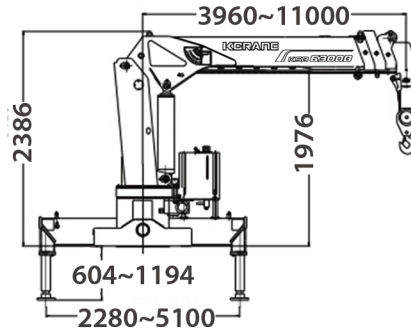


TECHNICAL SPECIFICATION

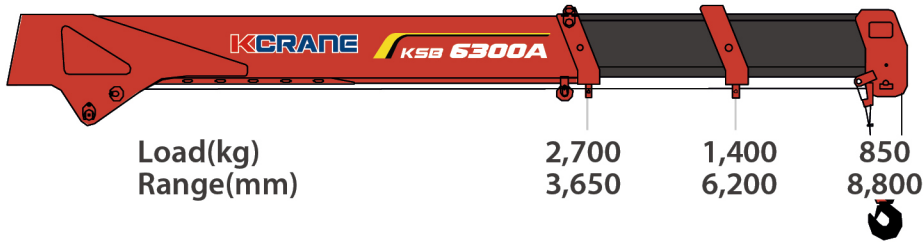
Model	Unit	KSB6300A	KSB6300B
Max Lifting Capacity	ton	6.3t	6.3t
Max Lifting height	m	11.5	12
Max working radius	m	10.1	11
Max lifting moment	Kn.m	160	157
Boom sections	stages	2	3
Slewing angle	°	360 All Rotation	360 All Rotation
Boom raising angle	°	0 ~ 75	0 ~ 75
outrigger span	mm	2,215~5,015	3,960~11,000
Installation space	mm	1,100	1,100
Rated oil flow	L/min	50	40
Working pressure	Mpa	20	20
Recommended oil tank capacity	L	120	90
Crane Weight	kg	2,600	2,230

STICK BOOM CRANE KSB6300

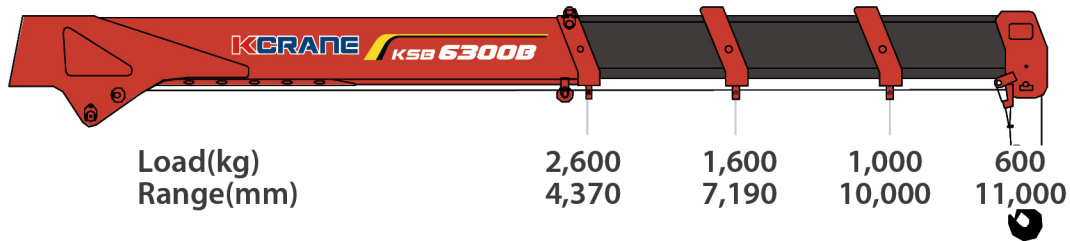
EXTERIOR DRAWING



WORKING RANGE



BOOM SECTION 2



BOOM SECTION 3

ADDITIONAL OPTIONS



REMOTE CONTROL



AUGER

Model	Unit	KEA7000
Part No.	-	107000
Carrier	T	7~10
Max Torque	N.m	6,931
Pressure	Bar	240
Oil Flow Range	l/min	61~121
Rotary Speed	rpm	37~72
Hydraulic Hose	Inch	3/4
Output Shaft	mm	ø75
Unit Weight	Kg	130
Unit Height	mm	850
Unit Max.Dia.	mm	269
Auger Series	mm	55
Auger Length	mm	1,500
Drill Dia. Range	mm	150~900
Application Model	-	KSB5000A, KSB5000B, KSB6300, KSB8000

STICK BOOM CRANE KSB7000

FEATURE & BENEFITS

- Excellent performance of Stick Boom Crane
- Strong material
- Powerful rectangle boom design

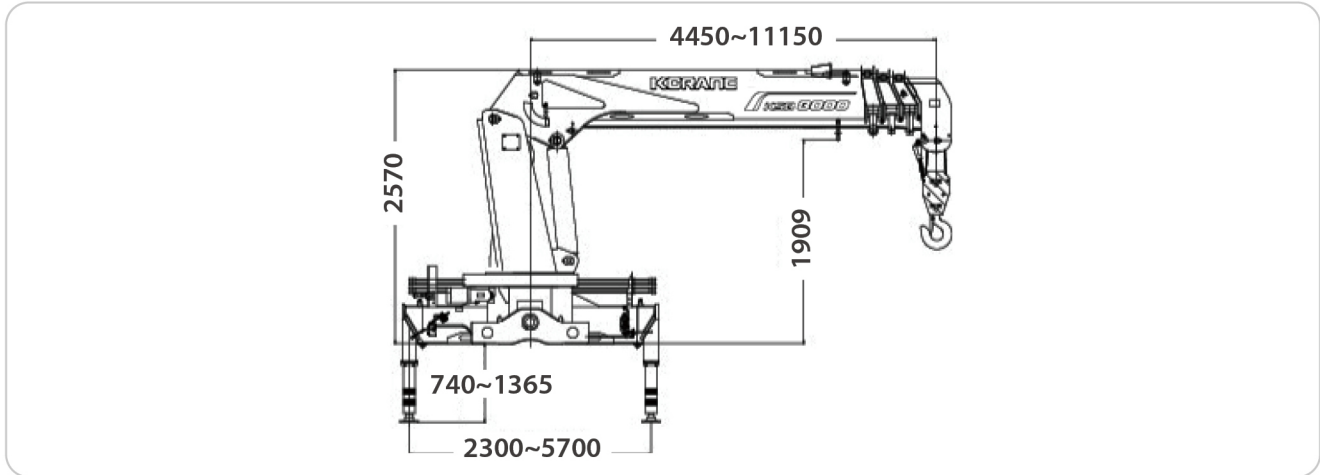


TECHNICAL SPECIFICATION

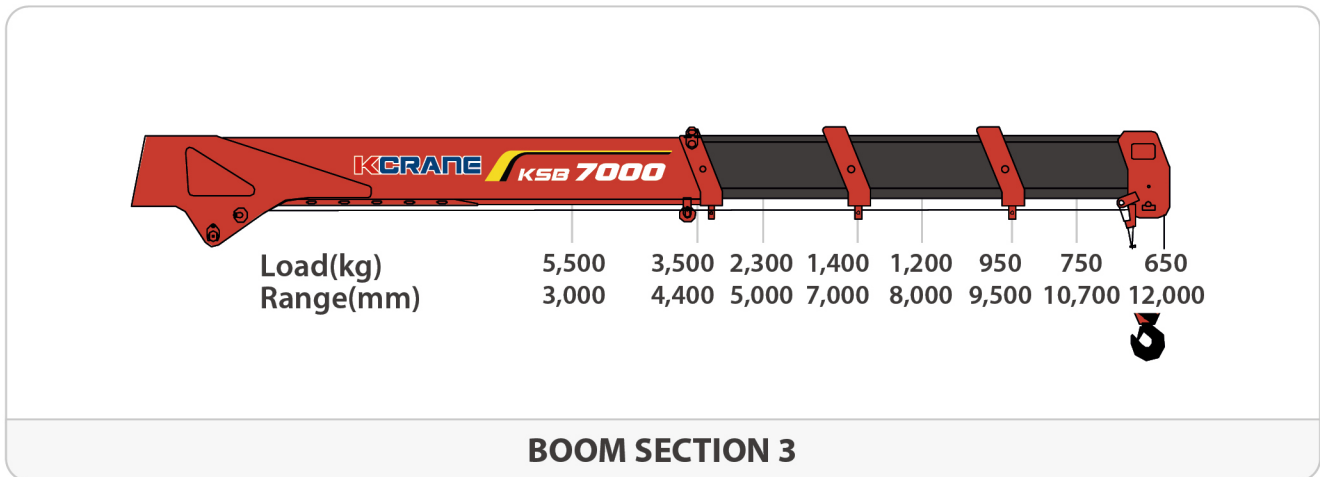
Model	Unit	KSB7000
Max Lifting Capacity	ton	7t
Max Lifting height	m	14.3
Max working radius	m	12
Max lifting moment	Kn.m	175
Boom sections	stages	3
Slewing angle	°	360 All Rotation
Boom raising angle	°	0 ~ 75
outrigger span	mm	2,215~5,015
Installation space	mm	1,200
Rated oil flow	L/min	50
Working pressure	Mpa	16
Recommended oil tank capacity	L	120
Crane Weight	kg	2,850

STICK BOOM CRANE KSB7000

EXTERIOR DRAWING



WORKING RANGE



ADDITIONAL OPTIONS



REMOTE CONTROL



AUGER

Model	Unit	KEA7000
Part No.	-	107000
Carrier	T	7~10
Max Torque	N.m	6,931
Pressure	Bar	240
Oil Flow Range	l/min	61~121
Rotary Speed	rpm	37~72
Hydraulic Hose	Inch	3/4
Output Shaft	mm	ø75
Unit Weight	Kg	130
Unit Height	mm	850
Unit Max.Dia.	mm	269
Auger Series	mm	S5
Auger Length	mm	1,500
Drill Dia. Range	mm	150~900
Application Model	-	KSB5000A, KSB5000B, KSB6300, KSB8000

STICK BOOM CRANE KSB8000

FEATURE & BENEFITS

- Excellent performance of Stick Boom Crane
- Strong material
- Powerful rectangle boom design

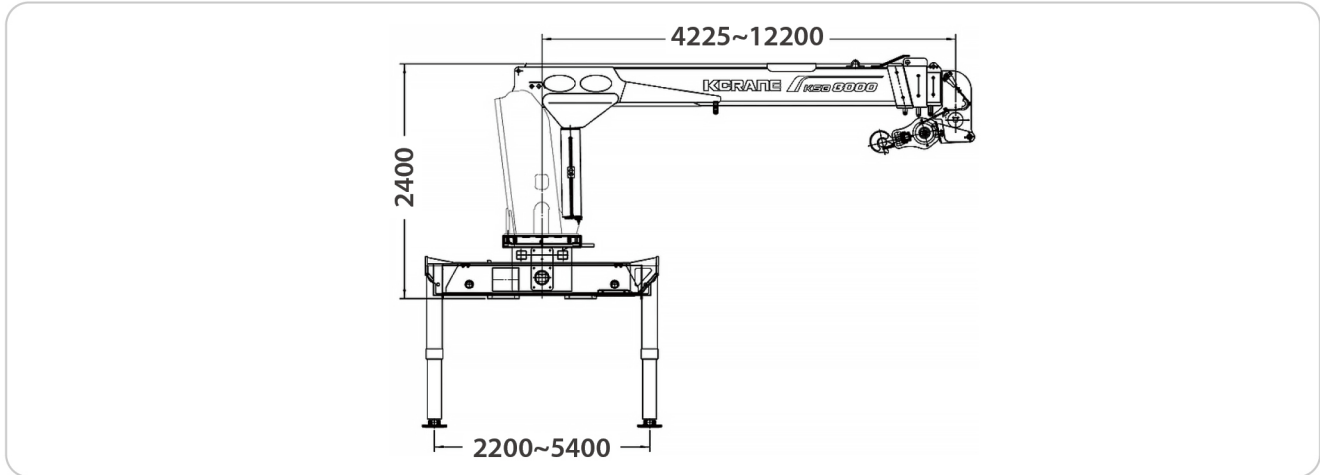


TECHNICAL SPECIFICATION

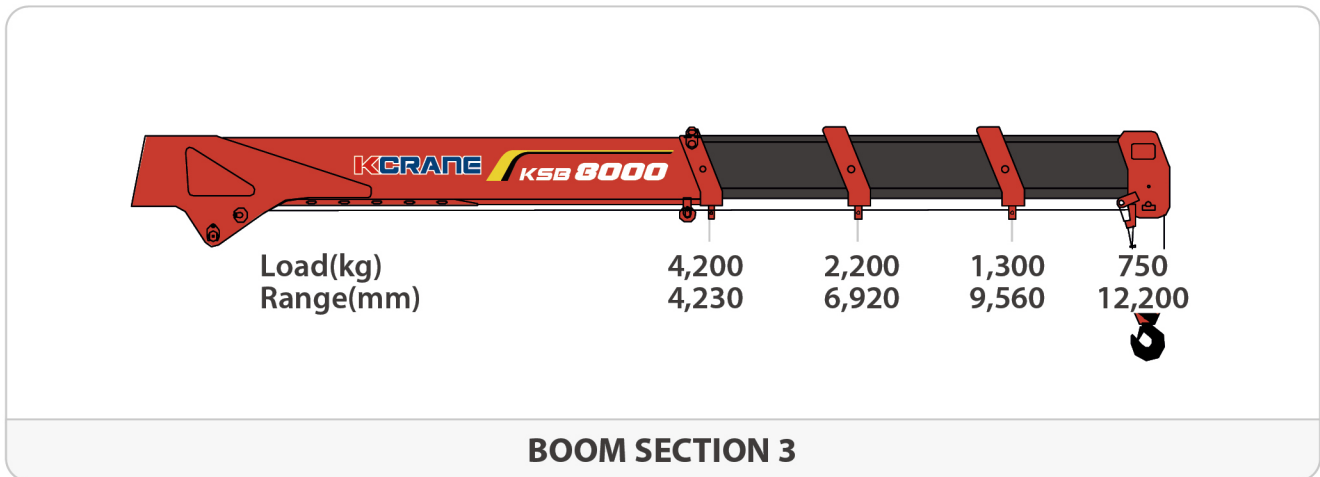
Model	Unit	KSB8000
Max Lifting Capacity	ton	8t
Max Lifting height	m	14.5
Max working radius	m	12.5
Max lifting moment	Kn.m	200
Boom sections	stages	3
Slewing angle	°	360 All Rotation
Boom raising angle	°	0 ~ 75
outrigger span	mm	2,310~5,710
Installation space	mm	1,350
Rated oil flow	L/min	63
Working pressure	Mpa	20
Recommended oil tank capacity	L	150
Crane Weight	kg	3,400

STICK BOOM CRANE KSB8000

EXTERIOR DRAWING



WORKING RANGE



ADDITIONAL OPTIONS



REMOTE CONTROL



AUGER

Model	Unit	KEA7000
Part No.	-	107000
Carrier	T	7~10
Max Torque	N.m	6,931
Pressure	Bar	240
Oil Flow Range	l/min	61~121
Rotary Speed	rpm	37~72
Hydraulic Hose	Inch	3/4
Output Shaft	mm	ø75
Unit Weight	Kg	130
Unit Height	mm	850
Unit Max.Dia.	mm	269
Auger Series	mm	S5
Auger Length	mm	1,500
Drill Dia. Range	mm	150~900
Application Model	-	KSB5000A, KSB5000B, KSB6300, KSB8000

STICK BOOM CRANE KSB10000

FEATURE & BENEFITS

- Excellent performance of Stick Boom Crane
- Strong material
- Powerful rectangle boom design

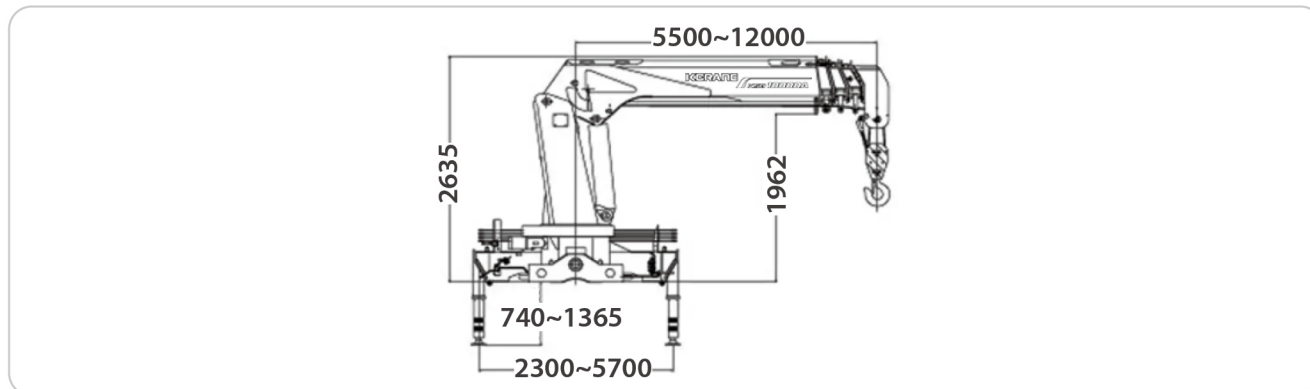


TECHNICAL SPECIFICATION

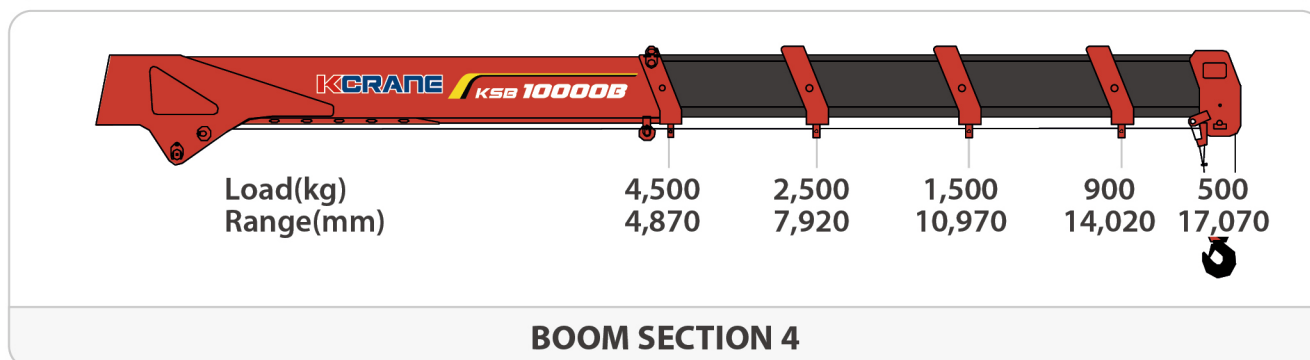
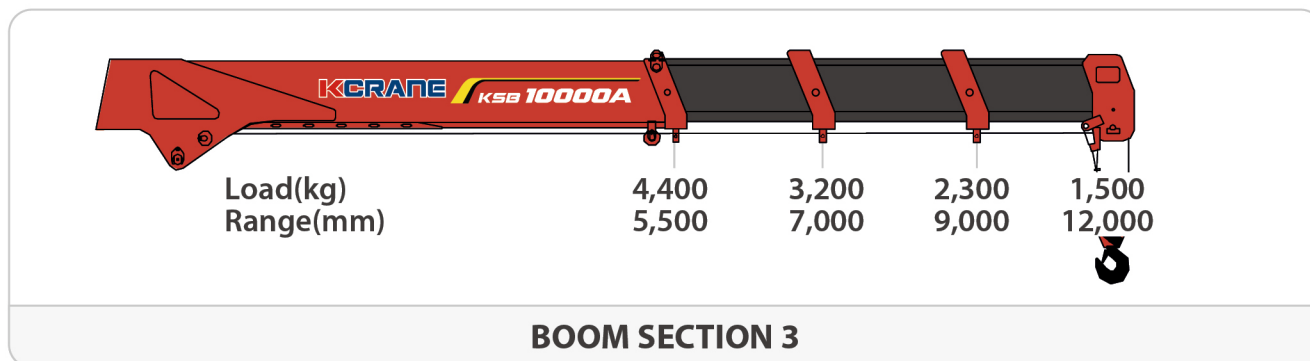
Model	Unit	KSB10000A	KSB10000B
Max Lifting Capacity	ton	10t	10t
Max Lifting height	m	12.5	19
Max working radius	m	12	17
Max lifting moment	Kn.m	250	250
Boom sections	stages	3	4
Slewing angle	°	360 All Rotation	360 All Rotation
Boom raising angle	°	0 ~ 75	0 ~ 75
outrigger span	mm	2,300~5,700	2,318~5,900
Installation space	mm	1,150	1,400
Rated oil flow	L/min	63	63
Working pressure	Mpa	26	20
Recommended oil tank capacity	L	160	200
Crane Weight	kg	3,800	4,150

STICK BOOM CRANE KSB10000

EXTERIOR DRAWING



WORKING RANGE



ADDITIONAL OPTIONS

- Allows to remotely control the crane.
- Provides the best-possible overview of the loading process and ensures higher efficiency in use.



REMOTE CONTROL

STICK BOOM CRANE KSB12000

FEATURE & BENEFITS

- Excellent performance of Stick Boom Crane
- Strong material
- Powerful rectangle boom design

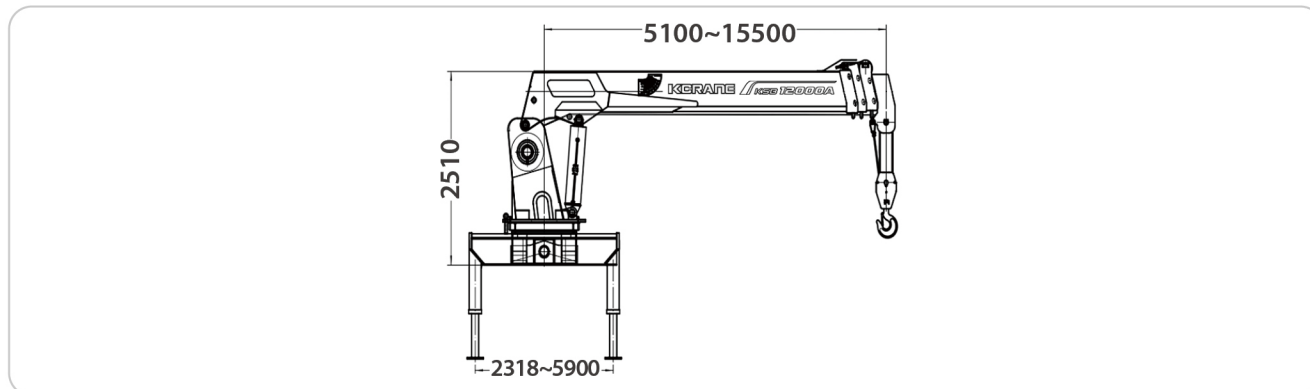


TECHNICAL SPECIFICATION

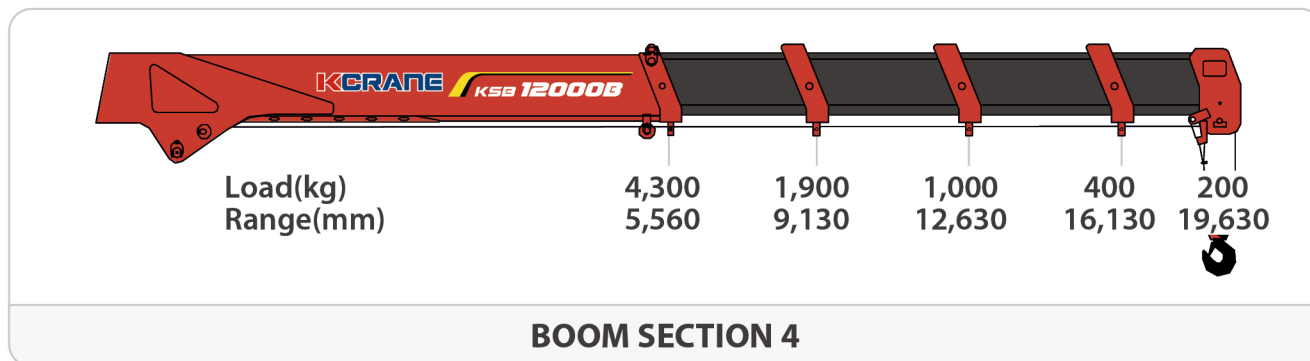
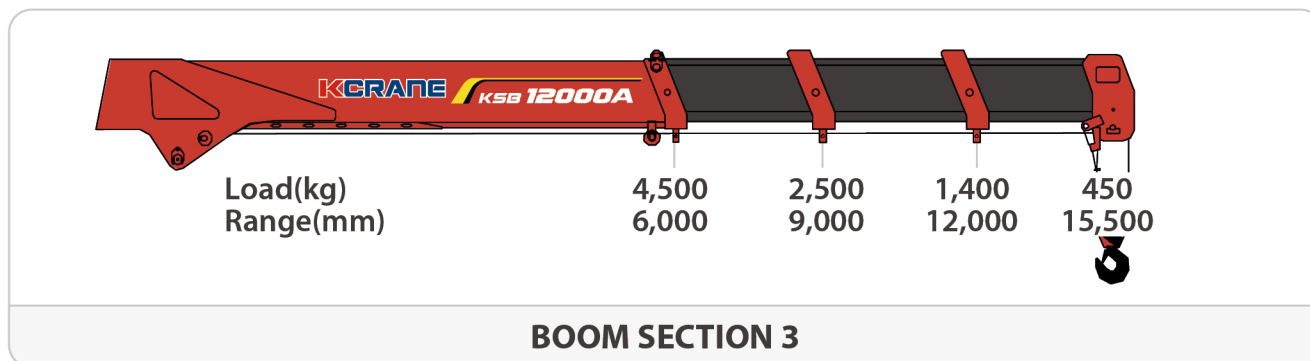
Model	Unit	KSB12000A	KSB12000B
Max Lifting Capacity	ton	12t	12t
Max Lifting height	m	17	22
Max working radius	m	15.5	19.63
Max lifting moment	Kn.m	300	-
Boom sections	stages	3	4
Slewing angle	°	360 All Rotation	360 All Rotation
Boom raising angle	°	0 ~ 75	0 ~ 75
outrigger span	mm	2,318~5,900	2,330~5,930
Installation space	mm	1,400	1,200
Rated oil flow	L/min	80	80
Working pressure	Mpa	20	20
Recommended oil tank capacity	L	200	200
Crane Weight	kg	4,600	5,200

STICK BOOM CRANE KSB12000

EXTERIOR DRAWING



WORKING RANGE



ADDITIONAL OPTIONS

- Allows to remotely control the crane.
- Provides the best-possible overview of the loading process and ensures higher efficiency in use.



REMOTE CONTROL

STICK BOOM CRANE KSB14000

FEATURE & BENEFITS

- Excellent performance of Stick Boom Crane
- Strong material
- Powerful rectangle boom design

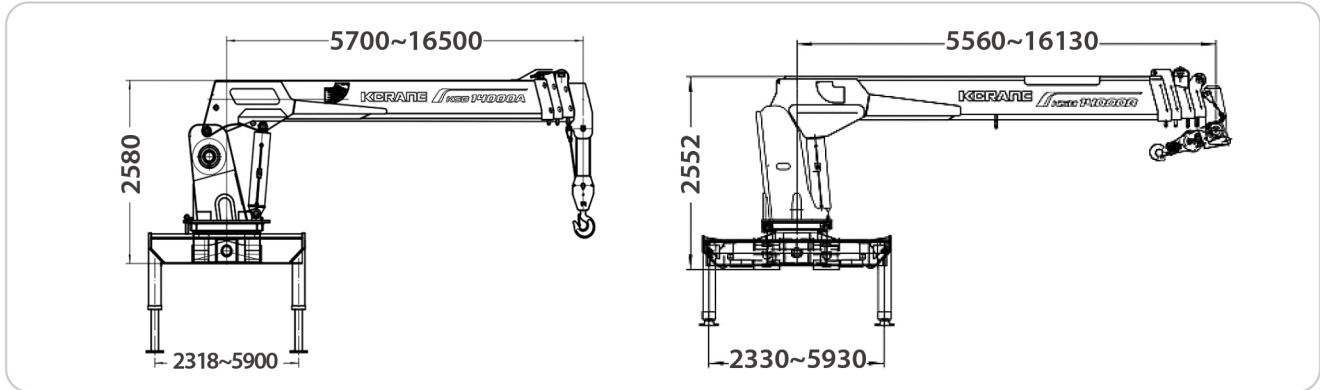


TECHNICAL SPECIFICATION

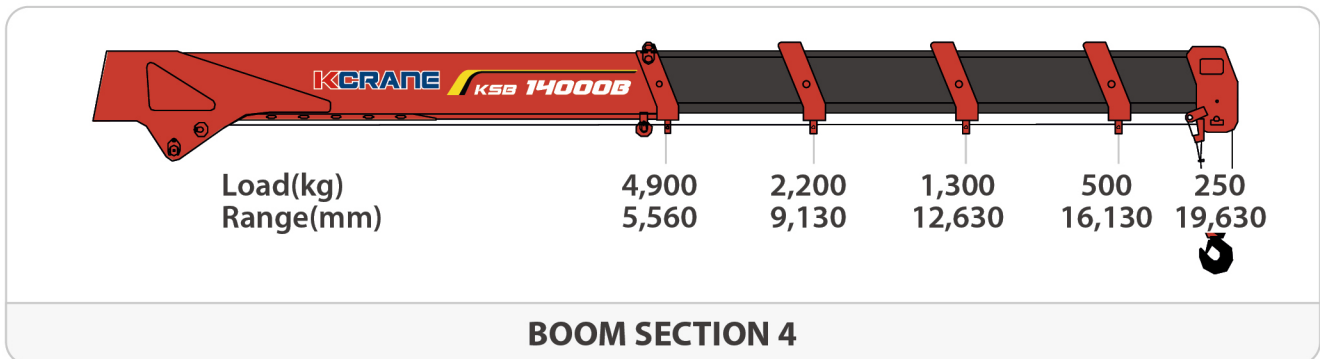
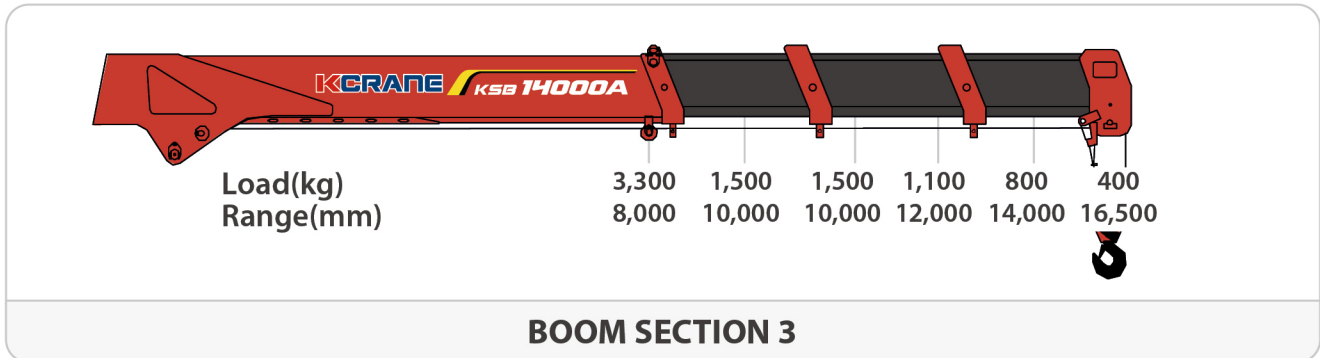
Model	Unit	KSB14000A	KSB14000B
Max Lifting Capacity	ton	14t	14t
Max Lifting height	m	18.6	22.7
Max working radius	m	16.5	19.6
Max lifting moment	Kn.m	-	-
Boom sections	stages	3	4
Slewing angle	°	360 All Rotation	360 All Rotation
Boom raising angle	°	0 ~ 75°	0 ~ 75°
outrigger span	mm	2,318~5,900	2,330~5,930
Installation space	mm	1,450	1,200
Rated oil flow	L/min	80	80
Working pressure	Mpa	20	20
Recommended oil tank capacity	L	200	200
Crane Weight	kg	5,800	5,500

STICK BOOM CRANE KSB14000

EXTERIOR DRAWING



WORKING RANGE



ADDITIONAL OPTIONS

- Allows to remotely control the crane.
- Provides the best-possible overview of the loading process and ensures higher efficiency in use.



REMOTE CONTROL

STICK BOOM CRANE KSB16000

FEATURE & BENEFITS

- Excellent performance of Stick Boom Crane
- Strong material
- Powerful rectangle boom design

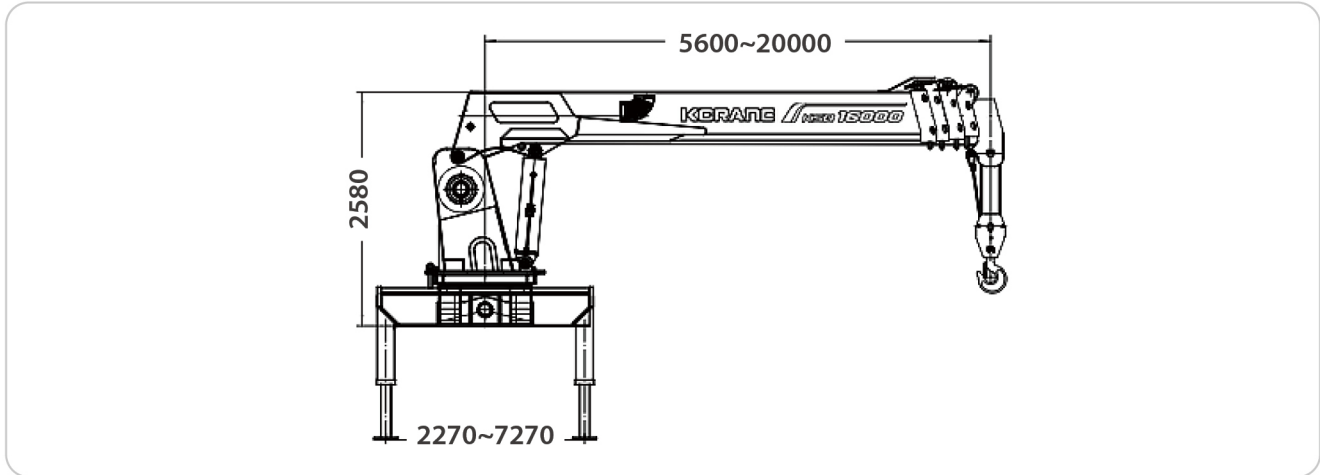


TECHNICAL SPECIFICATION

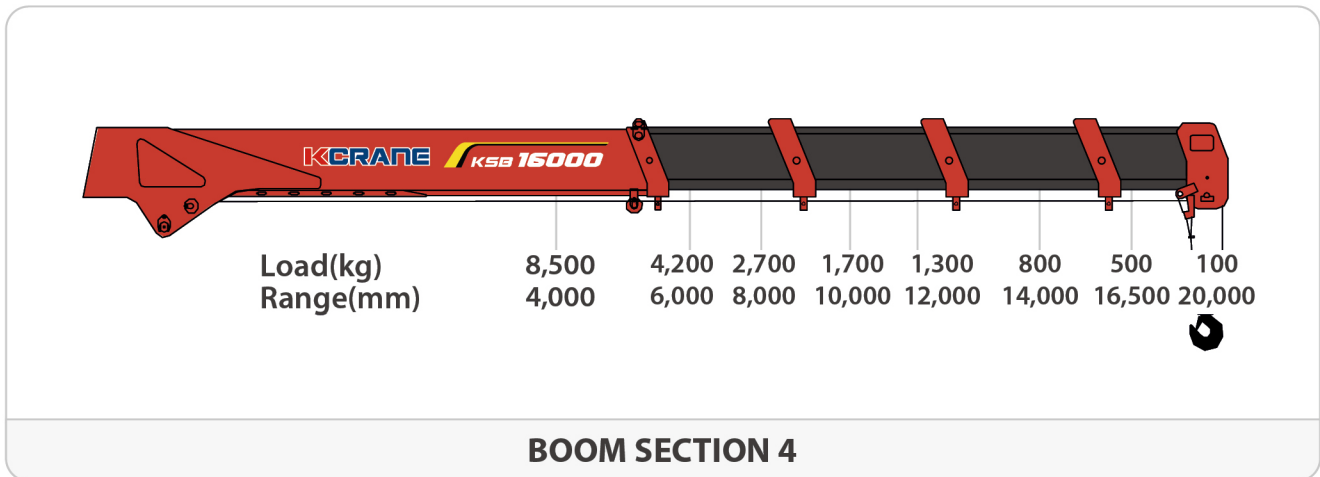
Model	Unit	KSB16000
Max Lifting Capacity	ton	16t
Max Lifting height	m	20.1
Max working radius	m	20
Max lifting moment	Kn.m	-
Boom sections	stages	4
Slewing angle	°	360 All Rotation
Boom raising angle	°	0 ~ 75°
outrigger span	mm	2,270~7,270
Installation space	mm	1,550
Rated oil flow	L/min	80
Working pressure	Mpa	20
Recommended oil tank capacity	L	200
Crane Weight	kg	6,700

STICK BOOM CRANE KSB16000

EXTERIOR DRAWING



WORKING RANGE



ADDITIONAL OPTIONS

- Allows to remotely control the crane.
- Provides the best-possible overview of the loading process and ensures higher efficiency in use.



REMOTE CONTROL

STICK BOOM CRANE KSB20000

FEATURE & BENEFITS

- Excellent performance of Stick Boom Crane
- Strong material
- Powerful rectangle boom design

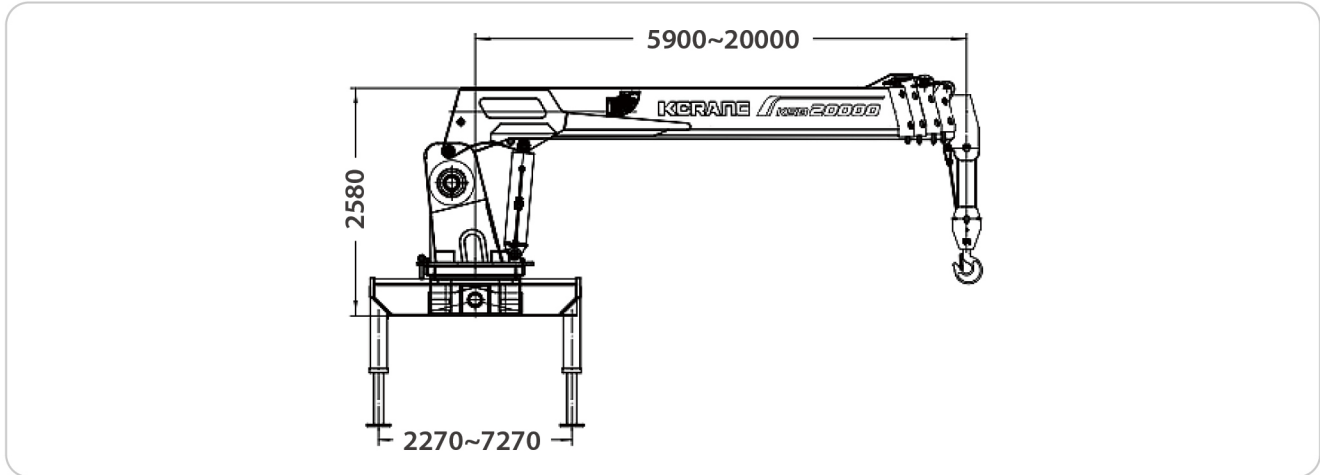


TECHNICAL SPECIFICATION

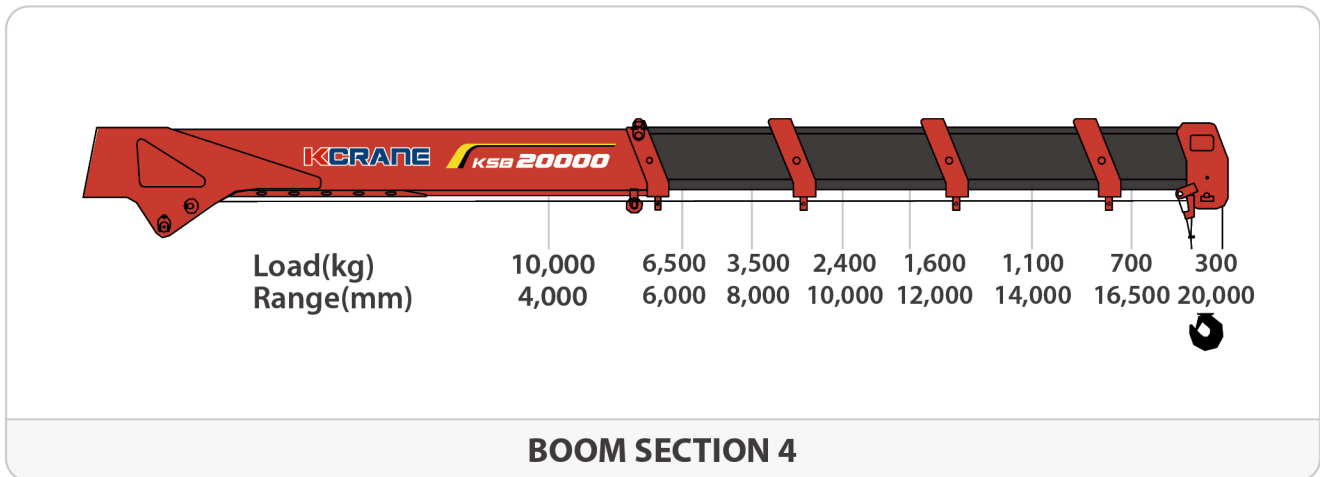
Model	Unit	KSB20000
Max Lifting Capacity	ton	20t
Max Lifting height	m	20.1
Max working radius	m	20
Max lifting moment	Kn.m	-
Boom sections	stages	4
Slewing angle	°	360 All Rotation
Boom raising angle	°	0 ~ 75
outrigger span	mm	2,270~7,270
Installation space	mm	1,600
Rated oil flow	L/min	80
Working pressure	Mpa	25
Recommended oil tank capacity	L	200
Crane Weight	kg	8,100

STICK BOOM CRANE KSB20000

EXTERIOR DRAWING



WORKING RANGE



ADDITIONAL OPTIONS

- Allows to remotely control the crane.
- Provides the best-possible overview of the loading process and ensures higher efficiency in use.



REMOTE CONTROL

KNUCKLE BOOM CRANE KSK3200

FEATURE & BENEFITS

- Safety First : designed & developed for material handling work only
- Aerial platform with KC (Korea Safety Certificate)
- Option : Remote-controlled system, Winch

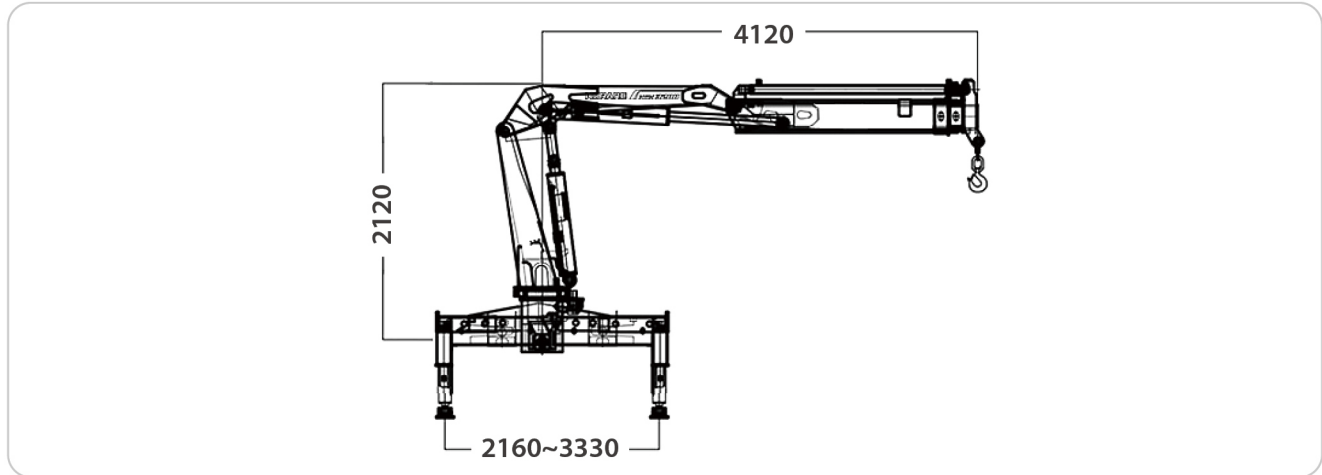


TECHNICAL SPECIFICATION

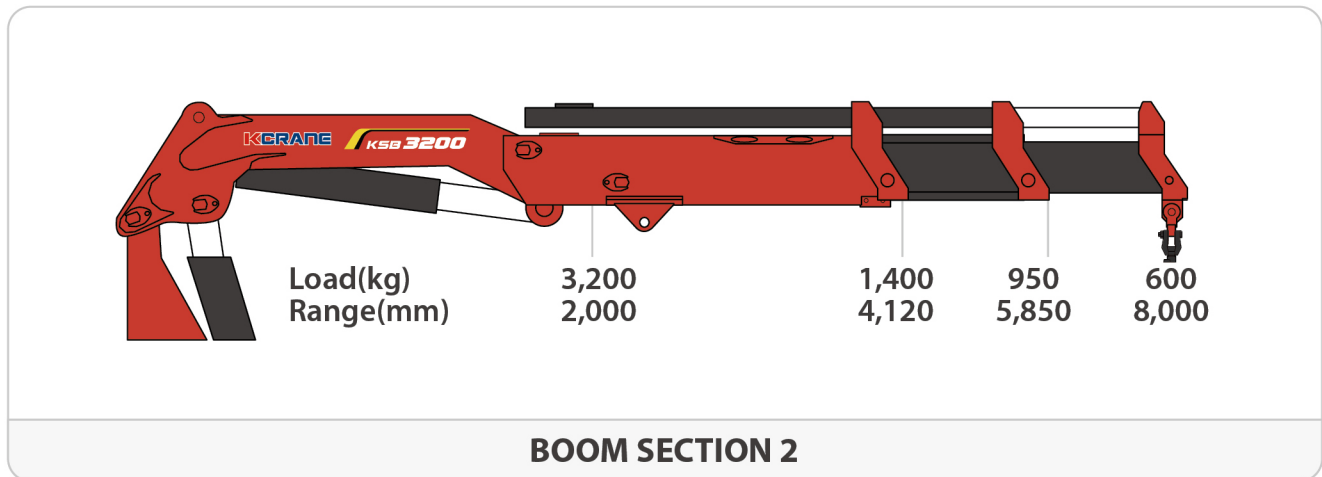
Model	Unit	KSK3200
Max Lifting Capacity	ton	3.2t
Max Lifting height	m	9.4
Max working radius	m	6.4
Max lifting moment	Kn.m	80
Boom sections	stages	2
Slewing angle	°	360 All Rotation
Boom raising angle	°	-
outrigger span	mm	1,840~3,010
Installation space	mm	850
Rated oil flow	L/min	30
Working pressure	Mpa	28
Recommended oil tank capacity	L	80
Crane Weight	kg	1,300

KNUCKLE BOOM CRANE KSK3200

EXTERIOR DRAWING



WORKING RANGE



ADDITIONAL OPTIONS

- Allows to remotely control the crane.
- Provides the best-possible overview of the loading process and ensures higher efficiency in use.
- The winch are widely used in different industries.
- The robust winch can be customized to your application conditions.



REMOTE CONTROL



WRINCH

KNUCKLE BOOM CRANE KSK5000

FEATURE & BENEFITS

- Safety First : designed & developed for material handling work only
- Aerial platform with KC (Korea Safety Certificate)
- Option : Remote-controlled system, Winch

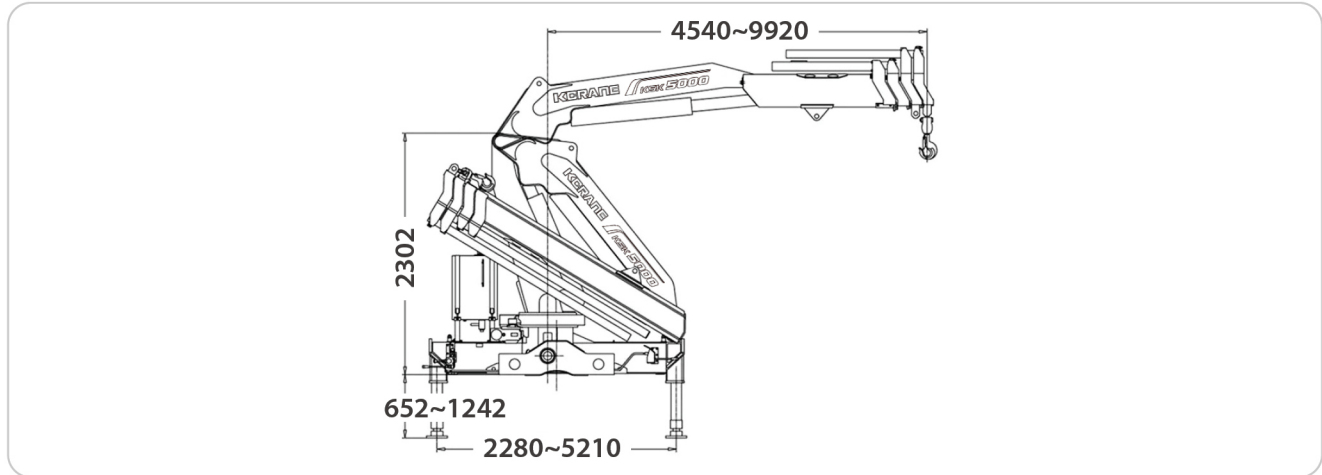


TECHNICAL SPECIFICATION

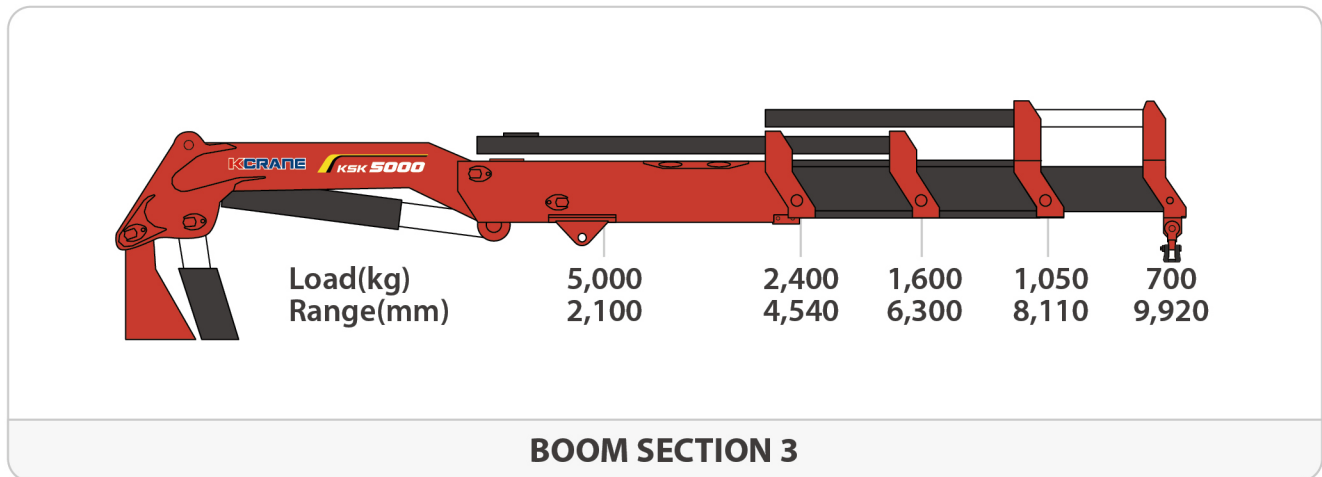
Model	Unit	KSK5000
Max Lifting Capacity	ton	5t
Max Lifting height	m	12
Max working radius	m	9.92
Max lifting moment	Kn.m	105
Boom sections	stages	3
Slewing angle	°	360 All Rotation
Boom raising angle	°	-
outrigger span	mm	2,280~5,210
Installation space	mm	1,050
Rated oil flow	L/min	25
Working pressure	Mpa	28
Recommended oil tank capacity	L	90
Crane Weight	kg	2,117

KNUCKLE BOOM CRANE KSK5000

EXTERIOR DRAWING



WORKING RANGE



ADDITIONAL OPTIONS

- Allows to remotely control the crane.
- Provides the best-possible overview of the loading process and ensures higher efficiency in use.
- The winch are widely used in different industries.
- The robust winch can be customized to your application conditions.



REMOTE CONTROL



WRINCH

KNUCKLE BOOM CRANE KSK8000

FEATURE & BENEFITS

- Safety First : designed & developed for material handling work only
- Aerial platform with KC (Korea Safety Certificate)
- Option : Remote-controlled system, Winch

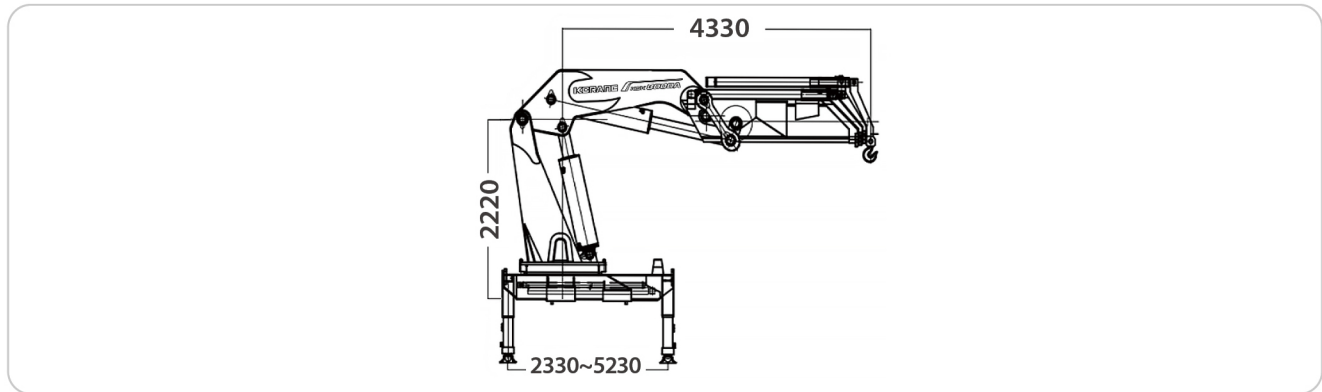


TECHNICAL SPECIFICATION

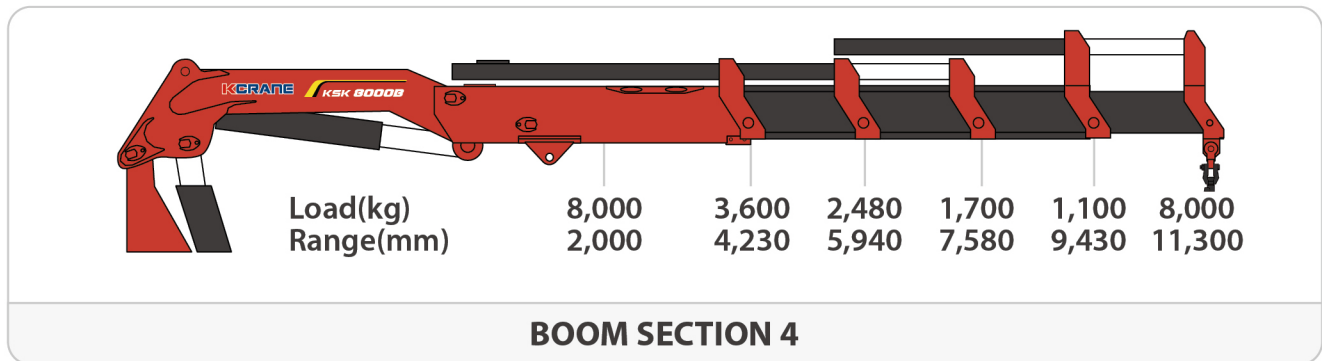
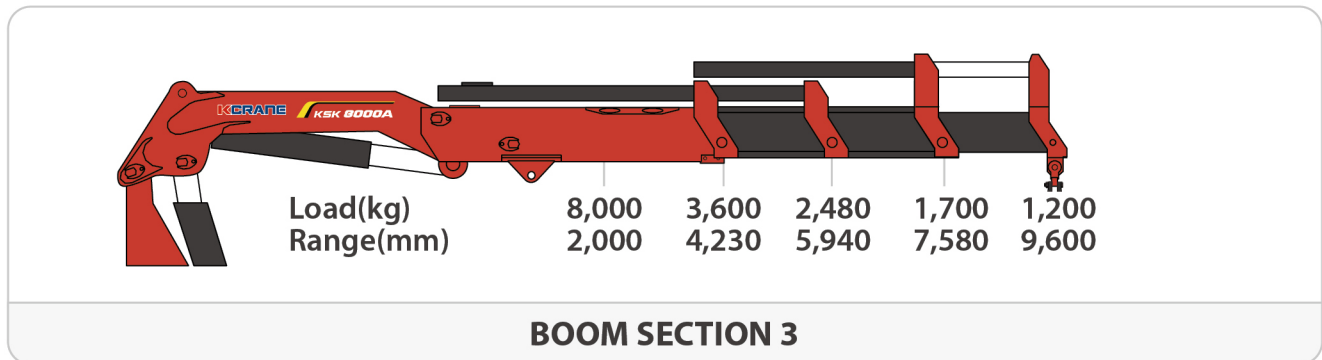
Model	Unit	KSK8000A	KSK8000B
Max Lifting Capacity	ton	8t	8t
Max Lifting height	m	11.3	13.1
Max working radius	m	9.6	11.3
Max lifting moment	Kn.m	160	160
Boom sections	stages	3	4
Slewing angle	°	360 All Rotation	360 All Rotation
Boom raising angle	°	-	-
outrigger span	mm	2,330~5,230	2,330~5,230
Installation space	mm	1,400	1,400
Rated oil flow	L/min	60	60
Working pressure	Mpa	28	28
Recommended oil tank capacity	L	120	120
Crane Weight	kg	3,500	3,800

KNUCKLE BOOM CRANE KSK8000

EXTERIOR DRAWING



WORKING RANGE



ADDITIONAL OPTIONS

- Allows to remotely control the crane.
- Provides the best-possible overview of the loading process and ensures higher efficiency in use.



REMOTE CONTROL



WRINCH

KNUCKLE BOOM CRANE KSK10000

FEATURE & BENEFITS

- Safety First : designed & developed for material handling work only
- Aerial platform with KC (Korea Safety Certificate)
- Option : Remote-controlled system, Winch

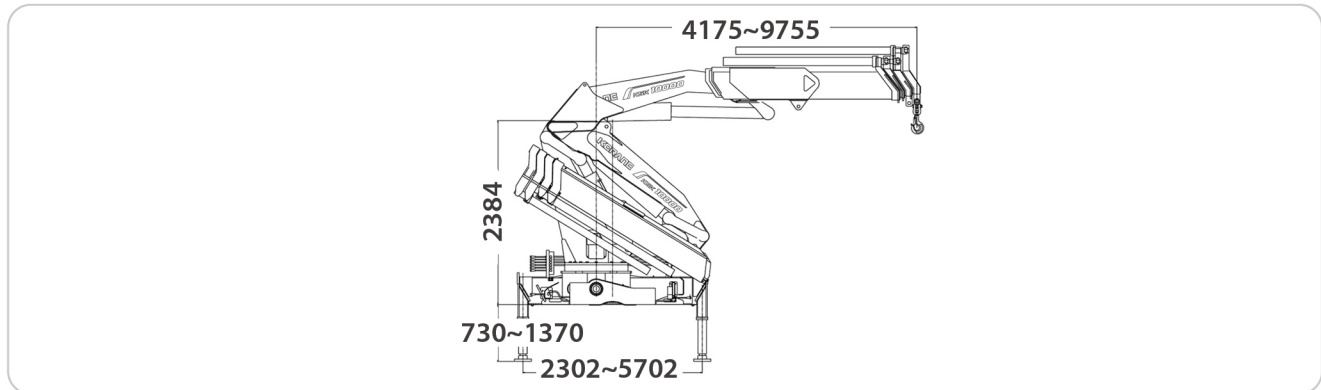


TECHNICAL SPECIFICATION

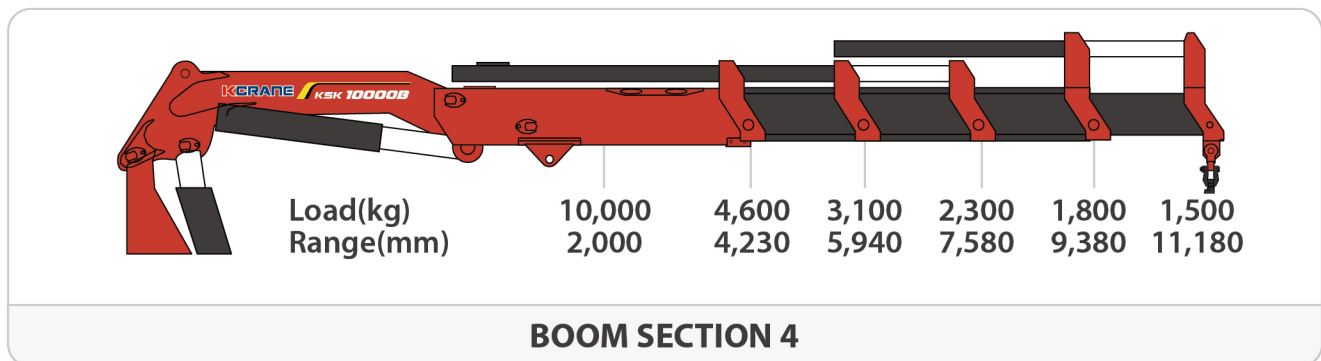
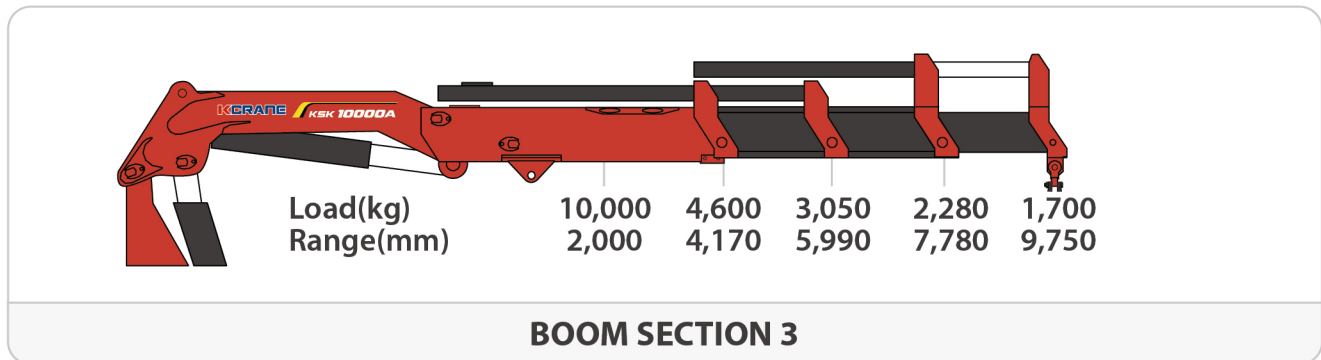
Model	Unit	KSK10000A	KSK10000B
Max Lifting Capacity	ton	10t	10t
Max Lifting height	m	12	13
Max working radius	m	9.7	11.2
Max lifting moment	Kn.m	200	200
Boom sections	stages	3	4
Slewing angle	°	360 All Rotation	360 All Rotation
Boom raising angle	°	-	-
outrigger span	mm	2,302~5,702	2,330~5,630
Installation space	mm	1,150	1,420
Rated oil flow	L/min	160	60
Working pressure	Mpa	30	28
Recommended oil tank capacity	L	160	150
Crane Weight	kg	3,477	4,200

KNUCKLE BOOM CRANE KSK10000

EXTERIOR DRAWING



WORKING RANGE



ADDITIONAL OPTIONS

- Allows to remotely control the crane.
- Provides the best-possible overview of the loading process and ensures higher efficiency in use.



REMOTE CONTROL



WRINCH

KNUCKLE BOOM CRANE KSK12000

FEATURE & BENEFITS

- Safety First : designed & developed for material handling work only
- Aerial platform with KC (Korea Safety Certificate)
- Option : Remote-controlled system, Winch

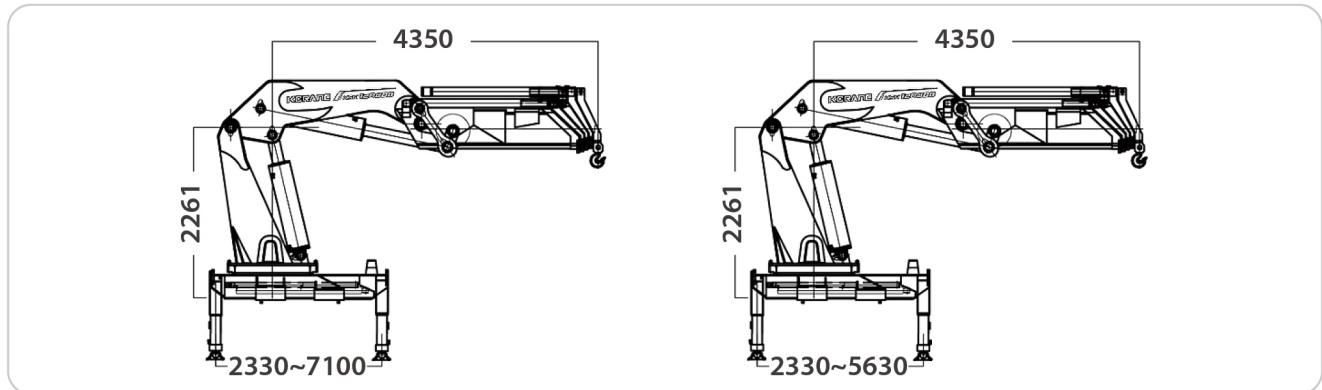


TECHNICAL SPECIFICATION

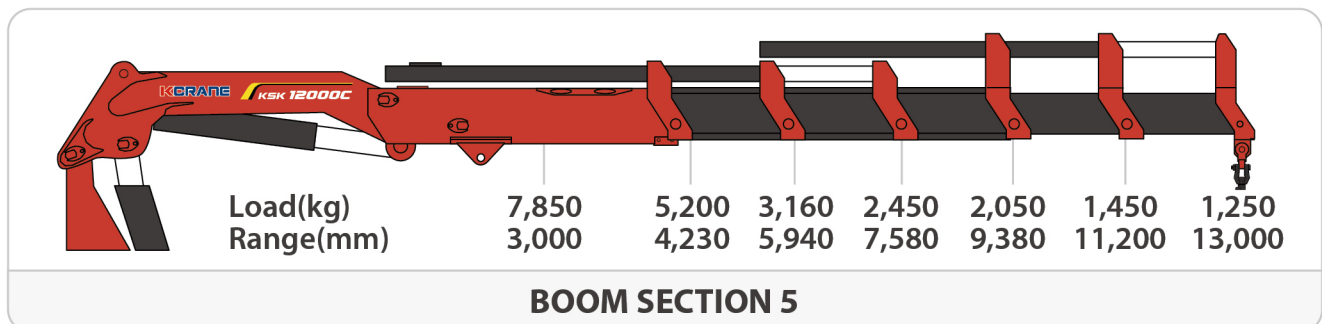
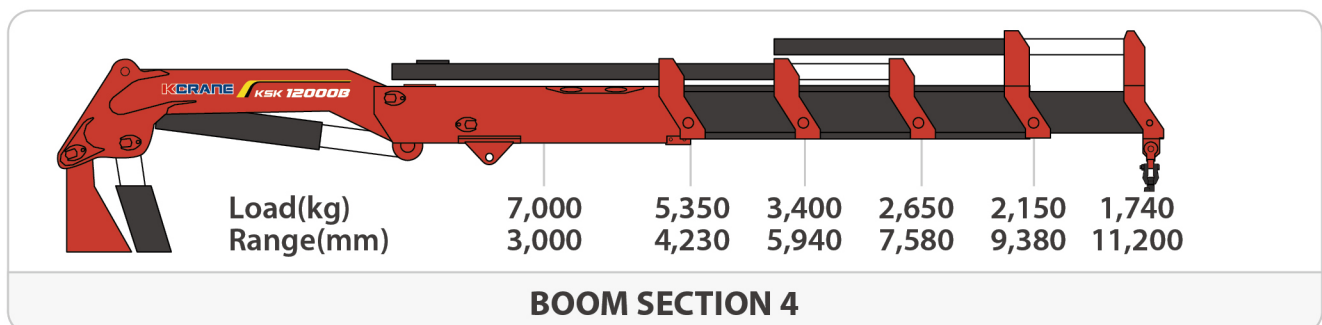
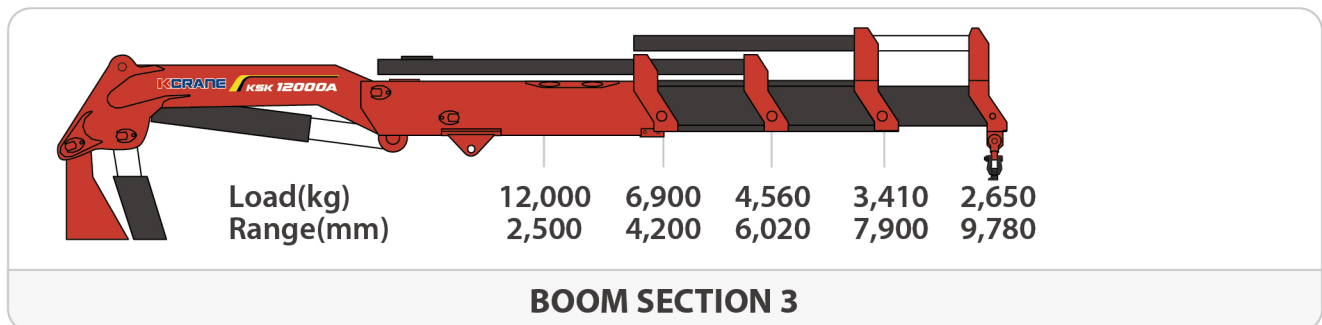
Model	Unit	KSK12000A	KSK12000B	KSK12000C
Max Lifting Capacity	ton	12t	12t	12t
Max Lifting height	m	12	13	15
Max working radius	m	9.8	11.2	12.5
Max lifting moment	Kn.m	300	240	240
Boom sections	stages	3	4	5
Slewing angle	°	360 All Rotation	360 All Rotation	360 All Rotation
Boom raising angle	°	-	-	-
outrigger span	mm	2,220~5,220	2,330~5,630	2,330~5,630
Installation space	mm	1,400	1,420	1,420
Rated oil flow	L/min	55	60	60
Working pressure	Mpa	30	28	28
Recommended oil tank capacity	L	160	200	200
Crane Weight	kg	4,130	4,500	4,650

KNUCKLE BOOM CRANE KSK12000

EXTERIOR DRAWING



WORKING RANGE



ADDITIONAL OPTIONS



REMOTE CONTROL



WRINCH

KNUCKLE BOOM CRANE KSK16000

FEATURE & BENEFITS

- Safety First : designed & developed for material handling work only
- Aerial platform with KC (Korea Safety Certificate)
- Option : Remote-controlled system, Winch

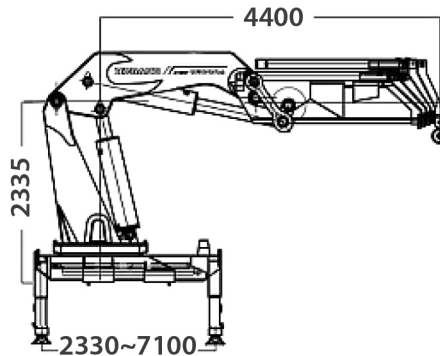


TECHNICAL SPECIFICATION

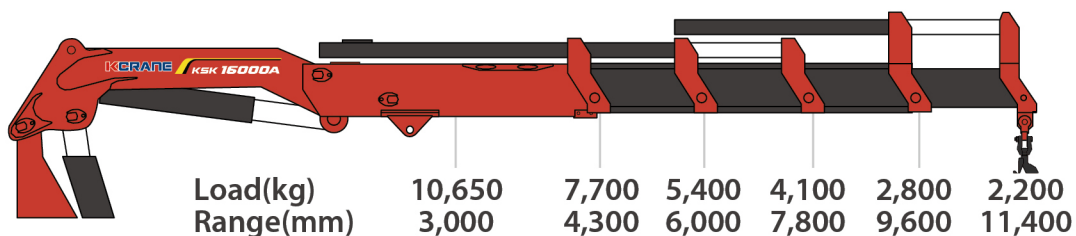
Model	Unit	KSK16000A	KSK16000B	KSK16000C
Max Lifting Capacity	ton	16t	16t	16t
Max Lifting height	m	14.5	15.7	17.5
Max working radius	m	11.4	13.5	15.3
Max lifting moment	Kn.m	330	330	330
Boom sections	stages	4	5	6
Slewing angle	°	360 All Rotation	360 All Rotation	360 All Rotation
Boom raising angle	°	-	-	-
outrigger span	mm	2,330~5,630	2,330~5,630	2,330~5,630
Installation space	mm	1,470	1470	1470
Rated oil flow	L/min	60	60	60
Working pressure	Mpa	28	28	28
Recommended oil tank capacity	L	120	120	120
Crane Weight	kg	4,800	4,980	5,130

KNUCKLE BOOM CRANE KSK16000

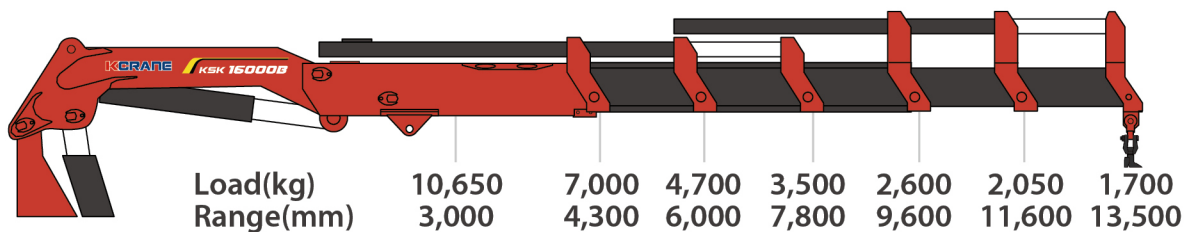
EXTERIOR DRAWING



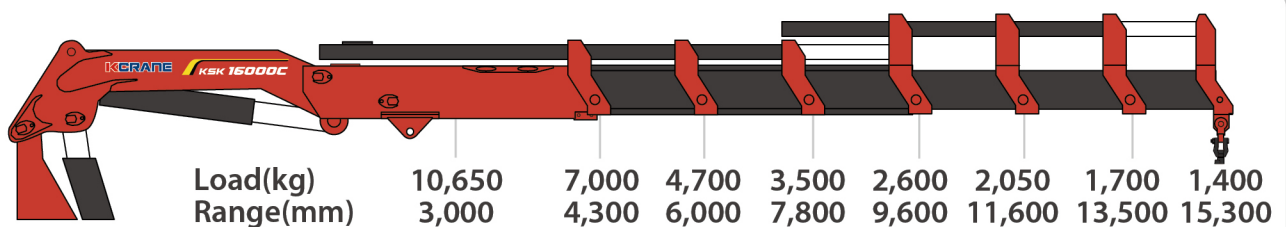
WORKING RANGE



BOOM SECTION 4



BOOM SECTION 5



BOOM SECTION 6

ADDITIONAL OPTIONS



REMOTE CONTROL



WRINCH

KNUCKLE BOOM CRANE KSK20000

FEATURE & BENEFITS

- Safety First : designed & developed for material handling work only
- Aerial platform with KC (Korea Safety Certificate)
- Option : Remote-controlled system, Winch

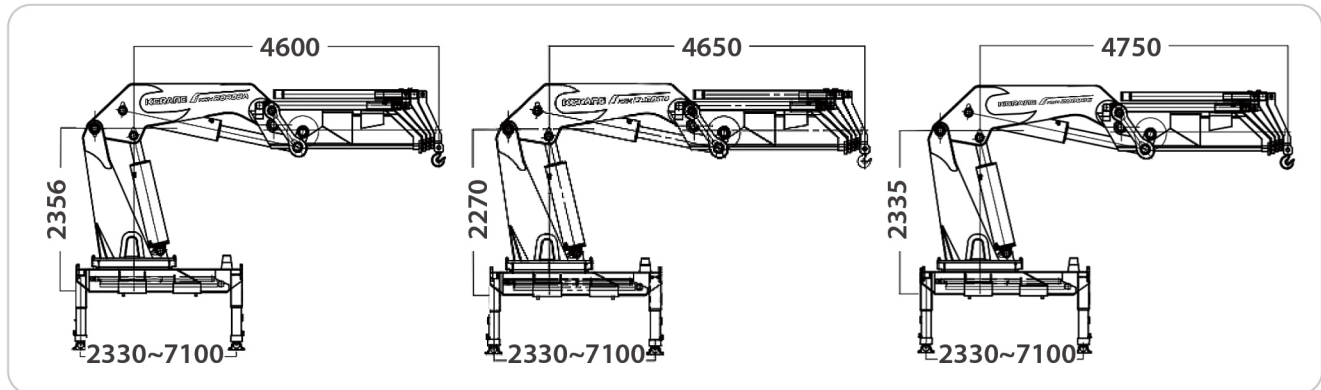


TECHNICAL SPECIFICATION

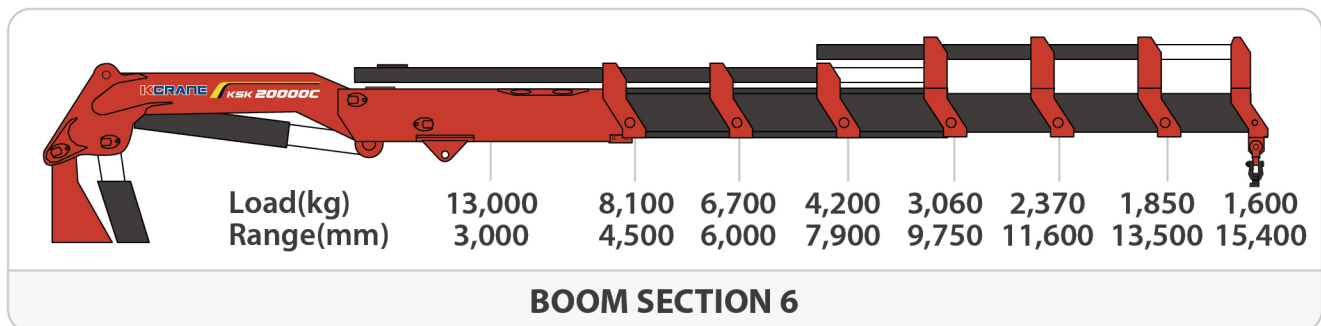
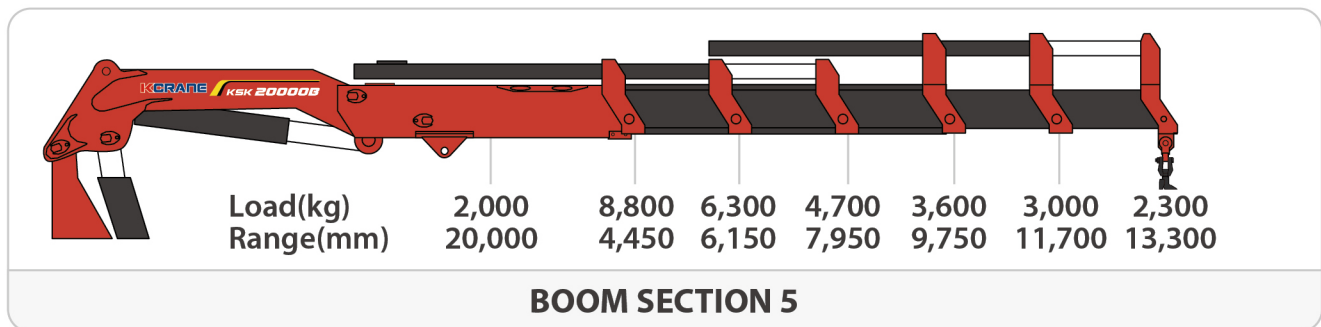
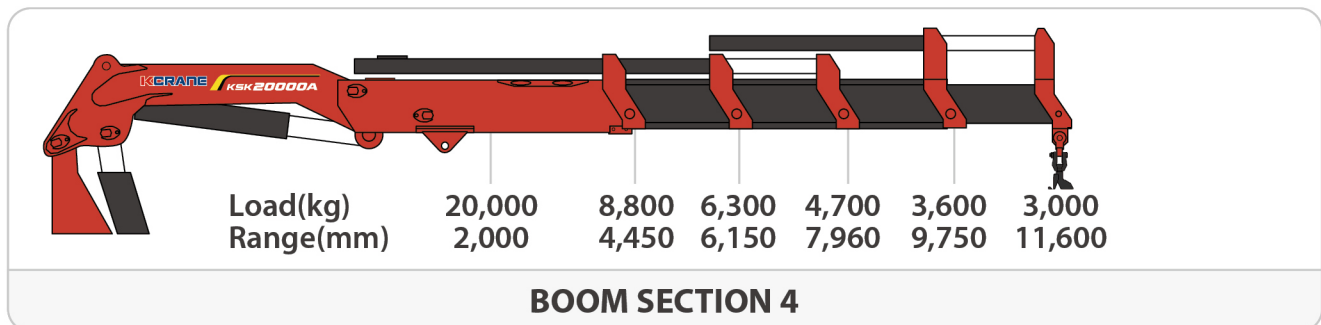
Model	Unit	KSK20000A	KSK20000B	KSK20000C
Max Lifting Capacity	ton	20t	20t	20t
Max Lifting height	m	14.7	16.8	17.6
Max working radius	m	11.6	13.3	15.4
Max lifting moment	Kn.m	400	400	400
Boom sections	stages	4	5	6
Slewing angle	°	360 All Rotation	360 All Rotation	360 All Rotation
Boom raising angle	°	-	-	-
outrigger span	mm	2,330~7,100	2,300~5,900	2,330~7,100
Installation space	mm	1,530	1,250	1,530
Rated oil flow	L/min	80	80	64
Working pressure	Mpa	28	28	28
Recommended oil tank capacity	L	200	200	200
Crane Weight	kg	5,300	5,100	5,750

KNUCKLE BOOM CRANE KSK20000

EXTERIOR DRAWING



WORKING RANGE



ADDITIONAL OPTIONS



REMOTE CONTROL



WRINCH

KNUCKLE BOOM CRANE ACCESSORY

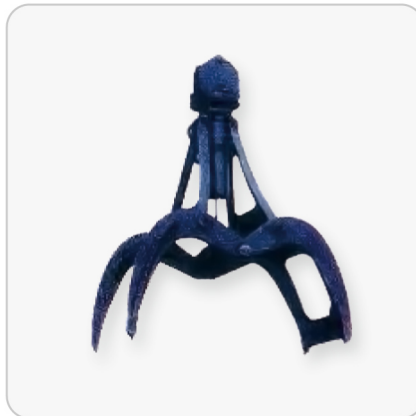
CRANE ACCESSORY

The accessories are made of high-quality steel and their high durability minimizes wear and tear. If you use the accessories that come with it, your equipment will last longer, which will help you save money, and reduce your balance.



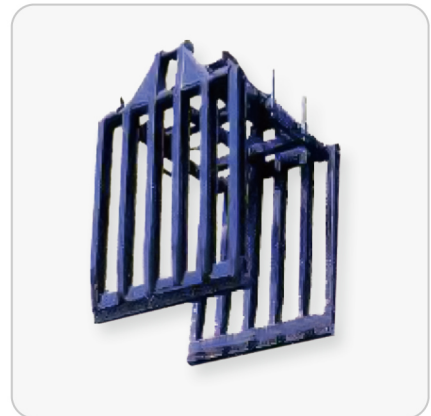
Scrap Grapple

Strong & stable holding work



Log Grapple

High-wear resistance material



Brick&Block Clamp

Very good visibility conditions



Pallet Fork

Self levels at any weight



Clamshell Bucket

360 ° forward/reverse rotation

AERIAL WORKING PLATFORMS

FEATURE & BENEFITS

· Heavy Industries are always thinking about what we should do in providing our customers with much trust&confidence and in manufacturing the most advanced product carrying out optimal function&high performance.



CORE COMPONENTS



OUTRIGGER OPERATION LEVERS

Valve can be safely protected by using separate cover and appearance is elegantly furnished in modern type.



WINCH

It guarantees safe operation by the installation of wet-corrosion automatic brakes.



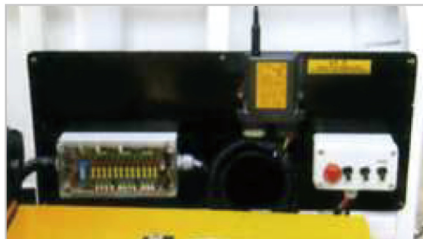
AUTOMATIC BUCKET TILTING

Bucket can be manually bended to suit user's operation type, which makes it possible to do inner clean-up.



OVERTHROW PREVENTIVE

Being secure by stopping its operation beyond safety range in case of overthrow-warning.



REMOTE CONTROL SYSTEM

Remote control Device operated in safety function range.



OUTRIGGER

Double extension box makes it possible to maximize extension width.

AERIAL WORKING PLATFORMS

FEATURE & BENEFITS

- Lightweight & Sturdy, Several Standards
- Competitively Priced, Fully Programmable



The housing is compact but rugged and several different configuration standards are offered for "off-the-shelf" availability.



Its pistol grip design allows for an easy single-hand operation.



The highly durable toggle switches or membrane switches are within easy reach of the thumb.

CORE COMPONENTS



HH 2X2 TRANSMITTER

All HH MFSHL transmitters are powered by 2 AA batteries which allow for up to 500 hours of operation.



TOGGLE SWITCHES

The highly durable toggle switches or membrane switches are within easy reach of the thumb.



MFSHL AC-16 RECEIVER

The HH MFSHL transmitters are fully compatible with MFSHL receivers.



H-LINK POCKET PC

H-Link is an intuitive and user-friendly software that runs on a Pocket PC.



H-LINK SOFTWARE

It provides remote access to the settings and parameters within the radio remote control.



MFSHL DC-16 RECEIVER

The HH MFSHL transmitters are fully compatible with MFSHL receivers.

AERIAL WORKING PLATFORMS

FEATURE & BENEFITS

- Safety First : designed & developed for material handling work only
- Aerial platform with KC (Korea Safety Certificate)



TECHNICAL SPECIFICATION

Model		Unit	KAW900	KAW1000
Bucket Max.capacity		kg.f	200	200
Max.working radius		m	6.8	6
Max.working height		m	9	10.5
Max.height of platform		m	-	8.5
Rated flow		L/min	12	30
Oil tank capacity		L	45	40
Winch capacity		kgf	-	-
Boom	Extension/Folding type	-	2 Wire	1 Wire
	Boom type	-	Pentagon	Pentagon
	Number of boom stage	-	3-stage boom	3-stage boom
	Down/Up angle	°	-24~77°	-30~79°
Outrigger	Main	m	Horizontal/Vertical automatic extension 2.8m	-
	Rear	m	Horizontal/Vertical automatic extension 1.8m	-
Swing	Type	-	Hydraulic motor+worm	Hydraulic motor+worm
	Angle	°	Right and left/Each180°	Right and left/Each 90°
	Speed	rpm	2	1
Bucket	Material	V	ERP(fiberglass reinforced plastics)	ERP(fiberglass reinforced plastics)
	Bucket size	-	1,060x820x1,100	1,060x820x1,100
	Capacity	kg	2Persons/200kg(including person)	2Persons/200kg(including person)
Safety Devices		-	Safety valve (relief valve)	
		-	Over-center valve for preventing dropping of boom	
		-	Double over-center valve for prevention of self retraction and self extension	
		-	Safety certificate for emergency stop and emergency pump	
		-	Overload protection	AML(Automatic moment limiter) System
Basic Specification		-	Automatic leveling system for bucket	
		-	Automatic extension outrigger(Main, Rear)	
		-	Wireless remote control working light/Diverter valve	
		-	Automatic leveling system/Winch(kg):500	Wire reels, Automatic leveling system
Options		-	-	Inverter(14.kw/3kw)

AERIAL WORKING PLATFORMS

FEATURE & BENEFITS

- Safety First : designed & developed for material handling work only
- Aerial platform with KC (Korea Safety Certificate)



TECHNICAL SPECIFICATION

Model		Unit	KAW1100	KAW1200
Bucket Max.capacity		kg.f	200	200
Max.working radius		m	8.1	8.1
Max.working height		m	12.3	12.3
Max.height of platform		m	10.8	10.8
Rated flow		L/min	12	12
Oil tank capacity		L	33	33
Winch capacity		kgf	Over 1,000	-
Boom	Extension/Folding type	-	2 Wire	2 Wire
	Boom type	-	Pentagon	Pentagon
	Number of boom stage	-	3-stage boom	3-stage boom
	Down/Up angle	°	-24~77°	-24~77°
Outrigger	Main	m	Horizontal/Vertical automatic extension 3.4m	
	Rear	m	Horizontal/Vertical automatic extension 1.8m(option)	
Swing	Type	-	Hydraulic motor+worm	Hydraulic motor+worm
	Angle	°	Right and left/360°	Right and left/Each180°
	Speed	rpm	2	2
Bucket	Material	v	ERP (fiberglass reinforced plastics) / insulation O bucket 2,000V	ERP (fiberglass reinforced plastics)
	Bucket size	-	1,225x820x1,145	1,060x820x1,100
	Capacity	kg	2Persons/300kg(including person)	2Persons/300kg(including person)
Safely Devices		-	-	Safety valve (relief valve)
		-	Over-center valve for preventing dropping of boom	
		-	Double over-center valve for prevention of self retraction and self extension	
		-	Safety certificate for emergency stop and emergency pump	
		-	AML(Automatic moment limiter) System	
Basic Specification		-	Wireless Remote control(Hetronic)/Working light/ Diverter valve/OVM tools	
		-	Wirereels, Automatic leveling system, Winch(1,000kgf)	Automatic extension outrigger(Main)
		-	-	Wire reels, Automatic leveling system
Options		-	Inverter(3kw)/Safety device	Inverter(3kw)/Winch 1set(Including winch safety device)

AERIAL WORKING PLATFORMS

FEATURE & BENEFITS

- Safety First : designed & developed for material handling work only
- Aerial platform with KC (Korea Safety Certificate)



TECHNICAL SPECIFICATION

Model		Unit	KAW1300S	KAW1500
Bucket Max.capacity		kg.f	200	200
Max.working radius		m	7.8	7.0
Max.working height		m	13	15
Max.height of platform		m	11.0	13
Rated flow		L/min	20	-
Oil tank capacity		L	40	45
Winch capacity		kgf	-	-
Boom	Extension/Folding type	-	2 Wire	2 Wire
	Boom type	-	Pentagon	Hexagonal 4 section boom
	Number of boom stage	-	3-stage boom	4-stage boom
	Down/Up angle	°	-30~79°	-24~77°
Outrigger	Main	m	Horizontal/Vertical automatic extension 3.5m	
	Rear	m	Horizontal/Vertical automatic extension 3.5m	Horizontal/Vertical automatic extension 1.8m
Swing	Type	-	Vertical automatic extension 1.8m(Optional)	Hydraulic motor+worm
	Angle	°	Right and left/Each95°	Right and left/Each180°
	Speed	rpm	1	1
Bucket	Material	V	ERP(fiberglass reinforced plastics)	ERP(fiberglass reinforced plastics)
	Bucket size	-	1,060x820x1,100	1,100x820x1,100
	Capacity	kg	2Persons/300kg(including person)	2Persons/200kg(including person)
Safety Devices		-	Safety valve (relief valve)	
		-	Over-center valve for preventing dropping of boom	
		-	Double over-center valve for prevention of self retraction and self extension	
		-	Safety certificate for emergency stop and emergency pump	
		-	AML(Automatic moment limiter) System	
Basic Specification		-	Automatic extension outrigger(Main)	
		-	Wireless Remote control(Hetronic)/Working light/ Diverter valve/OVM tools	
		-	Wirereels, Automatic leveling system	
Options		-	Inverter(3kw)/Winch 1set(Including winch safety device)	

AERIAL WORKING PLATFORMS

FEATURE & BENEFITS

- Safety First : designed & developed for material handling work only
- Aerial platform with KC (Korea Safety Certificate)



TECHNICAL SPECIFICATION

Model		Unit	KAW1900
Bucket Max.capacity		kg.f	200
Max.working radius		m	10.5
Max.working height		m	19
Max.height of platform		m	-
Rated flow		L/min	30
Oil tank capacity		L	80
Winch capacity		kgf	190
Boom	Extension/Folding type	-	4 Wire
	Boom type	-	5 Pentagon
	Number of boom stage	-	6-stage boom
	Down/Up angle	°	-24~80°
Outrigger	Main	m	-
	Rear	m	-
Swing	Type	-	Hydraulic motor+worm
	Angle	°	Right and left/Each180°
	Speed	rpm	0.89
Bucket	Bucket size	-	1,000x660x1,000
	Capacity	kg	-
Safely Devices		-	Safety valve (relief valve)
		-	Pilot check valve
		-	Derrick over-center valve
		-	Telescopic double over-center valve
		-	AML(Automatic moment limiter) System(option)
Basic Specification		-	Boom angle display, Wireless remote control
		-	Emergency stop, Buzzer and alarm
		-	Moment sensor, Boom-outrigger inter-lock
Options		-	Front outrigger, Bucket load cell, Outrigger length sensor



OFFICE

Office. 603 6th floor 298, Beotkkot-ro, Geumcheon-gu, Seoul, Republic of Korea

Factory. 246 Gogol-gil, Deogyang-gu, Goyang-si, Gyeonggi-do, Republic of Korea

Tel. (+82)2038-0008

Email. sales@kscparts.com